

**TOURISM INDICATORS**

AUSTRALIA

EMBARGO: 11:30AM (CANBERRA TIME) FRI 18 NOV 1998

**C O N T E N T S**

	<i>page</i>
Notes . . . . .	2
List of tables . . . . .	3
Tourism key national indicators . . . . .	5
In brief . . . . .	7
Tourist accommodation . . . . .	12
International tourism . . . . .	50
FEATURE ARTICLE	
Serviced apartments . . . . .	8
ADDITIONAL INFORMATION	
Explanatory notes . . . . .	69
Glossary . . . . .	74

- For further information about these and related statistics, contact Dianne Bourke on Canberra 02 6252 6348 or any ABS office shown on the back cover of this publication.

## NOTES

### FORTHCOMING ISSUES

*ISSUE (Quarter)      EXPECTED RELEASE DATE*

September 1998      25 February 1999

December 1998      14 May 1999

### CHANGES IN THIS ISSUE

As advised in the March quarter issue of this publication, the Survey of Tourist Accommodation has been substantially revised commencing with the March quarter 1998. Information in respect of 1997 has been re-tabulated on the basis of the new scope, while data for earlier periods have been recompiled to partially account for the new scope. Please refer to paragraphs 3 to 7 of the Explanatory Notes for further details.

Annual counts of establishments and capacity will be compiled in respect of the previous survey scope, and will be published annually in the December quarter issue of this publication.

W. McLennan  
Australian Statistician

## LIST OF TABLES

Page

### TOURIST ACCOMMODATION

Australia	<b>1</b>	Hotels, motels, guest houses and serviced apartments, 1988–98	15
	<b>2</b>	Accommodation establishments, June quarter 1997 to June quarter 1998	16
	<b>3</b>	Takings, accommodation establishments, June quarter 1997 to June quarter 1998	17
New South Wales	<b>4</b>	Hotels, motels, guest houses and serviced apartments, 1988–98	19
	<b>5</b>	Accommodation establishments, June quarter 1997 to June quarter 1998	20
	<b>6</b>	Takings, accommodation establishments, June quarter 1997 to June quarter 1998	21
Victoria	<b>7</b>	Hotels, motels, guest houses and serviced apartments, 1988–98	23
	<b>8</b>	Accommodation establishments, June quarter 1997 to June quarter 1998	24
	<b>9</b>	Takings, accommodation establishments, June quarter 1997 to June quarter 1998	25
Queensland	<b>10</b>	Hotels, motels, guest houses and serviced apartments, 1988–98	27
	<b>11</b>	Accommodation establishments, June quarter 1997 to June quarter 1998	28
	<b>12</b>	Takings, accommodation establishments, June quarter 1997 to June quarter 1998	29
South Australia	<b>13</b>	Hotels, motels, guest houses and serviced apartments, 1988–98	31
	<b>14</b>	Accommodation establishments, June quarter 1997 to June quarter 1998	32
	<b>15</b>	Takings, accommodation establishments, June quarter 1997 to June quarter 1998	33
Western Australia	<b>16</b>	Hotels, motels, guest houses and serviced apartments, 1988–98	35
	<b>17</b>	Accommodation establishments, June quarter 1997 to June quarter 1998	36
	<b>18</b>	Takings, accommodation establishments, June quarter 1997 to June quarter 1998	37
Tasmania	<b>19</b>	Hotels, motels, guest houses and serviced apartments, 1988–98	39
	<b>20</b>	Accommodation establishments, June quarter 1997 to June quarter 1998	40
	<b>21</b>	Takings, accommodation establishments, June quarter 1997 to June quarter 1998	41

			Page
Northern Territory	<b>22</b>	Hotels, motels, guest houses and serviced apartments, 1988-98	43
	<b>23</b>	Accommodation establishments, June quarter 1997 to June quarter 1998	44
	<b>24</b>	Takings, accommodation establishments, June quarter 1997 to June quarter 1998	45
Australian Capital Territory	<b>25</b>	Hotels, motels, guest houses and serviced apartments, 1988-98	47
	<b>26</b>	Accommodation establishments, June quarter 1997 to June quarter 1998	48
	<b>27</b>	Takings, accommodation establishments, June quarter 1997 to June quarter 1998	49
<b>INTERNATIONAL TOURISM</b>			
Overseas visitors	<b>28</b>	Arrivals of overseas visitors, country of residence, June quarter 1998	54
	<b>29</b>	Arrivals of overseas visitors, country of residence, original, seasonally adjusted and trend, June quarter 1998	55
	<b>30</b>	Arrivals of overseas visitors, main purpose of journey and country of residence, June quarter 1998	56
	<b>31</b>	Arrivals of overseas visitors, main purpose of journey in person days, and country of residence, June quarter 1998	57
	<b>32</b>	Overseas visitors intended length of stay and main purpose of journey, by country of residence, June quarter 1998	58
	<b>33</b>	Age of overseas visitors, by country of residence and main purpose of journey, June quarter 1998	60
	<b>34</b>	Departures of overseas visitors, State or Territory in which most time was spent, June quarter 1998	62
Resident overseas departures	<b>35</b>	Departures of Australian residents for short-term trips abroad, June quarter 1998	65
	<b>36</b>	Departures of Australian residents for short-term trips abroad, main purpose of journey, June quarter 1998	66
	<b>37</b>	Departures of Australian residents for short-term trips abroad, main purpose of journey in persons days, June quarter 1998	67
	<b>38</b>	Departures of Australian residents for short-term trips abroad, country of intended stay, original, seasonally adjusted and trend, June quarter 1998	68

## TOURISM, KEY NATIONAL INDICATORS

	Period	Latest figures		Percentage change on	
		Value	Unit	Previous period	Corresponding period last year
<b>Tourist accommodation—supply and demand(a)</b>					
Licensed hotels, motels, guest houses and serviced apartments					
Establishments	Jun qtr 1998	3 628	no.	0.5	3.0
Guest rooms/units	Jun qtr 1998	176.1	'000	1.1	5.2
Bed spaces	Jun qtr 1998	517.0	'000	1.0	5.1
Room nights occupied	Jun qtr 1998	8 724.6	'000	-3.7	3.2
Room occupancy rate(b)	Jun qtr 1998	54.6	%	-3.4	-3.3
Guest nights	Jun qtr 1998	15 175.0	'000	-5.5	..
Guest arrivals	Jun qtr 1998	7 145.0	'000	-2.1	..
Takings from accommodation	Jun qtr 1998	881.1	\$m	-7.8	3.1
Caravan parks					
Establishments	Dec qtr 1997	2 685	no.	-0.3	-0.6
Total capacity	Dec qtr 1997	286 740	no.	-0.1	-0.4
Site occupancy rate(b)	Dec qtr 1997	43.7	%	-1.1	0.3
Holiday flats, units and houses					
Establishments	Dec qtr 1997	43 883	no.	3.8	3.9
Bed spaces	Dec qtr 1997	192 700	no.	4.1	4.0
Unit occupancy rate(b)	Dec qtr 1997	53.2	%	-1.7	-0.8
Visitor hostels					
Establishments	Dec qtr 1997	500	no.	0.2	4.2
Bed spaces	Dec qtr 1997	32 504	no.	1.4	7.1
Bed occupancy(b)	Dec qtr 1997	48.3	%	2.2	1.9
<b>Domestic tourism(c)</b>					
Number of overnight trips	1997-98	66 285	'000	..	4.8
Number of visitor nights	1997-98	262 340	'000	..	3.5
<b>International visitor arrivals</b>					
Number of visitor arrivals(d)	Sep 1998	326.2	'000	0.8	-1.4
Number of visitor arrivals(d)	1997-98	4 220.0	'000	..	-0.8
Expenditure by international visitors(e)	1997	7 756.9	\$m	..	4.6
<b>Australian departures(d)</b>					
Short-term departures	Aug 1998	265.6	'000	-2.0	10.7
Short-term departures	1997-98	3 031.9	'000	..	6.9
<b>Balance of payments(f)</b>					
Travel credits	Jun qtr 1998	2 450	\$m	-49.4	-3.8
Travel debits	Jun qtr 1998	-2 162	\$m	12.3	6.9
Balance on travel services	Jun qtr 1998	288	\$m	-512.5	-84.4
<b>Exchange rates(g)</b>					
United States dollar	Sep 1998	0.5945	per \$A	4.5	-17.4
Japanese yen	Sep 1998	80.57	per \$A	-0.1	-7.6

(a) *Tourist Accommodation, Australia, June Quarter 1998* (ABS Cat. no. 8635.0).

(b) Change is shown in terms of percentage points.

(c) Bureau of Tourism Research, *Domestic Tourism Monitor, 1997-98*.

(d) *Overseas Arrivals and Departures, Australia, September 1998* (ABS Cat. no. 3401.0).

(e) Bureau of Tourism Research, *International Visitor Survey, 1997*. Excludes international airfares and inclusive package tours purchased outside Australia.

(f) *Balance of Payments, Australia, June Quarter 1998* (ABS Cat. no. 5302.0).

(g) Reserve Bank of Australia, *The Reserve Bank of Australia Bulletin, October 1998*.

...continued

**TOURISM, KEY NATIONAL INDICATORS—continued**

	Period	Latest figures		Percentage change on	
		Value	Unit	Previous period	Corresponding period last year
<b>Price index(a)</b>					
Holiday travel and accommodation	Jun qtr 1998	105.3	. .	-1.7	0.6
<b>Employment(b)</b>					
Employed in accommodation, cafes and restaurants					
Males	Aug 1998	181.5	'000	-6.0	3.1
Females	Aug 1998	221.2	'000	-3.8	1.9
Persons	Aug 1998	402.7	'000	-4.8	2.4
<b>Average weekly earnings(c)</b>					
Accommodation, cafes and restaurants	Aug 1998	352.1	\$	0.1	4.0
<b>Tourist accommodation construction</b>					
Hotels, etc. approved(d)	Sep 1998	36.8	\$m	-9.4	-20.3
Hotels, etc. commenced(e)	Jun qtr 1998	195.0	\$m	-28.2	-41.7
Hotels, etc. under construction(e)	Jun qtr 1998	1 670.4	\$m	3.0	15.9
Hotels, etc. completed(e)	Jun qtr 1998	182.7	\$m	-25.4	-55.3

(a) *Consumer Price Index, September Quarter 1998* (ABS Cat. no. 6401.0); base year: 1989-90=100.

(b) *Labour Force, Australia, September 1998* (ABS Cat. no. 6203.0).

(c) *Average Weekly Earnings, States and Australia, August 1998* (ABS Cat. no. 6302.0).

(d) *Building Approvals, Australia, September 1998* (ABS Cat. no. 8731.0).

(e) *Building Activity, Australia, June Quarter 1998* (ABS Cat. no. 8752.0).

## IN BRIEF

### CHANGES TO PASSENGER CARDS

From July 1998 changes to international passenger procedures and documentation used at entry and exit ports in Australia were implemented, and will impact on the quality of short-term arrivals and departures data presented in future issues of this publication. For further details please refer to the May issue of *Overseas Arrivals and Departures, Australia* (ABS Cat. no. 3401.0), or contact Bill Allen on Canberra 02 6252 7329 or [Bill.Allen@ABS.gov.au](mailto:Bill.Allen@ABS.gov.au).

### UPDATE ON SOME TOURIST ATTRACTIONS

There were 224 employing organisations providing museum services at the end of June 1997, operating from 352 locations. During 1996–97, there were almost 17 million admissions to museum locations, 51% of which were paid admissions, with average admission price over this period being \$4.80.

At the end of June 1997 there were 457 employing commercial art gallery businesses, of which 415 were representing specific artists. These businesses had total sales of artworks of \$131 million.

There were 53 employing organisations operating zoological gardens and 12 operating aquaria in Australia at the end of June 1997. These businesses operated from 69 separate locations covering an area of 3,631 hectares. During 1996–97 there were almost 8 million paid admissions to zoos and aquaria, representing 0.43 visits for every person in Australia (population 18.5 million at the end of June 1997).

At the end of June 1997 there were 53 employing organisations operating botanic gardens, from 92 separate locations, and covering an area of 2,971 hectares. Only 16 organisations charged admission, during 1996–97, which was worth almost \$1 million.

There were 684 private and government organisations operating national parks and recreational parks and gardens at the end of June 1997. There were 462 individual national parks, 52,164 recreational parks and gardens, 270 wildlife sanctuaries, 42 tourist caves and 24 marine parks. These operations covered 72 million hectares, with the Great Barrier Reef Marine park accounting for 34 million hectares, and national parks accounting for 26 million hectares.

For further details or information about the ABS publications which contain these data please contact Graham Boxsell on Canberra 02 6252 5633.

## FEATURE ARTICLE

## SERVICED APARTMENTS IN AUSTRALIAN ACCOMMODATION

### INTRODUCTION

The scope of the Survey of Tourist Accommodation (STA) changed from the March quarter 1998. One of the changes was the creation of a new accommodation category called 'serviced apartments'. See Explanatory Notes for more information on changes to the STA.

### DEFINITION

The fundamental characteristic of serviced apartments included in the STA is that they are accommodation establishments which compete with hotels. In consultation with the accommodation industry, the ABS has defined a Serviced apartment establishment as being:

...an establishment providing short-term, non-residential accommodation which mostly comprise self-contained units at the same location, and which are available on a unit/apartment basis to the general public, for a minimum of one night; the units should have full cooking facilities (i.e. hot plates and oven/microwave), refrigerator and bath/shower and toilet facilities; all bed linen and towels should be provided and daily servicing (i.e. cleaning and bed making) must be available through the on-site management, although this service may not necessarily be used.

In addition, where a serviced apartment establishment consists of both residential and non-residential apartments, only accommodation which is short-term and non-residential (i.e. not let out on a lease basis) is included in the STA.

### SCOPE

Serviced apartment establishments with fewer than 15 units are excluded from the STA.

### AVAILABLE DATA

Data items collected from serviced apartments included in the STA are:

- in respect of the quarter:
  - maximum number of units available for short-term paying guests during the quarter; and
  - maximum number of beds normally available for such guests during the quarter,
- in respect of each month and the quarter:
  - unit nights (every night a unit is occupied by one or more paying guests);
  - guest nights (every night a paying guest stays);
  - guest arrivals (the first night each paying guest stays); and
  - takings from accommodation (excluding non-accommodation charges such as meals etc.),
- in respect of the last pay period of each month of the quarter:
  - the number of full-time, part-time and casual employees of the establishment.



AVAILABLE DATA *continued*

As the ABS has retabulated calendar year 1997 STA data on the basis of the new scope, there are now six quarters' comparable data on serviced apartment accommodation as shown in the table below.

## RESULTS

There were 502 establishments classified as serviced apartments at the end of June 1998. The serviced apartment sector accounts for 14% of all accommodation establishments in scope of the Survey of Tourist Accommodation and a total of 242 serviced apartment establishments, (or 48%) were classified as Stargrade 3. Of the remainder, 121 (24%) were classified to Stargrade 4 or 5 and 139 (28%) were Stargrade 1, 2 or ungraded.

While the serviced apartment sector is smaller than the hotels, motels and guest houses sectors, the rate of growth in serviced apartments has outstripped that of other accommodation types. The number of serviced apartments increased between June 1997 and June 1998 by 13% (up 56), compared with the much slower growth in the number of licensed hotels (up 1% or 28 across Australia), and motels and guest houses (up 3% or 23 establishments).

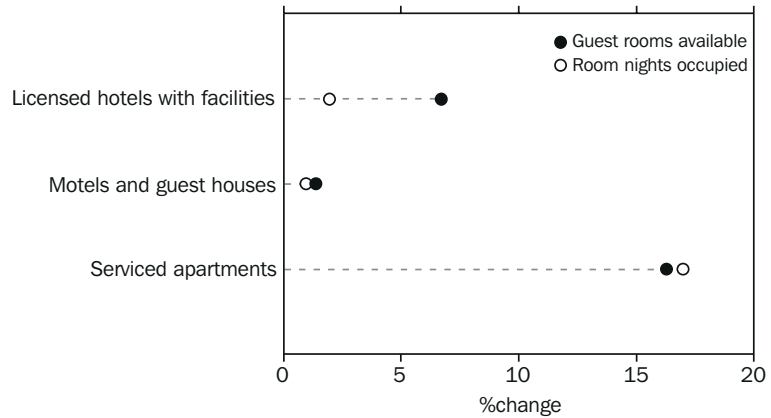
Guest units The increase in the number of guest units reflects this growth, with 3,174 additional guest units becoming available in the serviced apartment sector between June 1997 and June 1998, an increase of 16% over this period.

States and Territories Queensland is the location of 42% of all serviced apartments in scope of the Survey of Tourist Accommodation and has also shown the largest growth in both percentage and absolute terms. Over the 12 months to June 1998, 27 new accommodation establishments (or nearly half of all new serviced apartments) became available in this State, giving a total of 213 establishments. The Gold Coast region had 61 serviced apartment establishments, representing 29% of the Queensland total and 12% of the Australia total. Other important regions in Queensland are the Sunshine Coast, Tropical North Queensland and Brisbane, with 49, 39 and 31 serviced apartment establishments respectively at 30 June 1998.

New South Wales had 116 serviced apartment establishments at 30 June 1998. Nearly half of these (45%) were in Sydney. Others were spread across the State, with no particular region predominating.

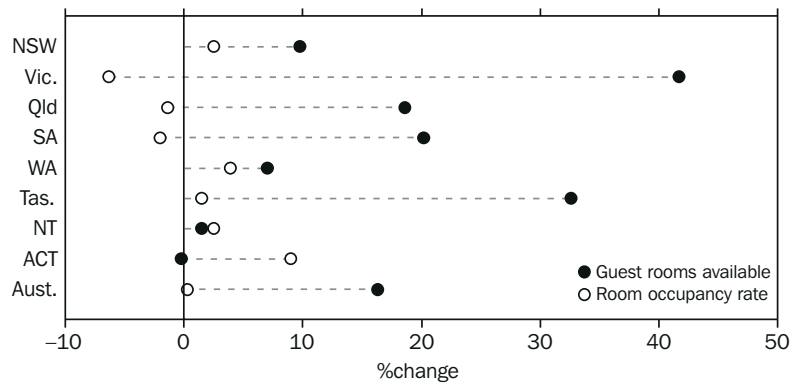
The remaining Australian States/Territories had a total of 173 serviced apartment establishments at 30 June 1998. Of these, Victoria and Western Australia each had 50, Tasmania had 24 and South Australia had 19. The Northern Territory had 17 establishments and the Australian Capital Territory had 13.

ACCOMMODATION ESTABLISHMENTS—JUN QTR 1997–JUN QTR 1998



**Occupancy rates** Occupancy rates for serviced apartments increased only slightly across Australia from 55.3% in June quarter 1997 to 55.6% in the June quarter 1998. The occupancy rates in four and five star establishments decreased from 60.8% to 58.4% over the same period, while three star establishments showed a decrease from 58.0% to 54.4%. Victoria, South Australia and Queensland had decreases in occupancy rates between the June quarter 1997 and the June quarter 1998 of 6.3, 2.0 and 1.4 percentage points respectively.

SERVICED APARTMENTS—JUN QTR 1997–JUN QTR 1998



Note: Change in room occupancy rate is shown in percentage points.

**Employment** Serviced apartment establishments with 15 or more units had employment of 8,504 persons at the end of June 1998. This was an increase of 12% over the same time in 1997.

SERVICED APARTMENTS, AUST.

	<i>Star grading</i>			<i>Total</i>
	<i>1,2 and ungraded</i>	<i>3</i>	<i>4 and 5</i>	
<b>ESTABLISHMENTS AND CAPACITY</b>				
	no.	no.	no.	no.
<b>Jun qtr 1997</b>				
Establishments	230	155	61	446
Units	8 641	5 971	4 885	19 497
<b>Jun qtr 1998</b>				
Establishments	139	242	121	502
Units	6 257	8 173	8 241	22 671
<b>UNIT NIGHTS OCCUPIED</b>				
	'000	'000	'000	'000
<b>1997</b>				
Mar qtr	428.6	390.9	306.5	1 126.0
Jun qtr	392.0	315.1	270.2	977.2
Sep qtr	555.7	330.7	293.2	1 179.6
Dec qtr	634.6	280.0	295.9	1 210.5
<b>1998</b>				
Mar qtr	619.2	271.5	314.8	1 205.5
Jun qtr	301.9	403.2	438.1	1 143.3
<b>UNIT OCCUPANCY RATES</b>				
	%	%	%	%
<b>1997</b>				
Mar qtr	61.8	67.0	73.0	66.4
Jun qtr	50.3	58.0	60.8	55.3
Sep qtr	62.9	63.0	68.1	64.2
Dec qtr	61.5	62.2	68.6	63.3
<b>1998</b>				
Mar qtr	60.0	62.5	67.6	62.4
Jun qtr	53.2	54.4	58.4	55.6
<b>TAKINGS</b>				
	\$m	\$m	\$m	\$m
<b>1997</b>				
Mar qtr	40.1	36.0	44.3	120.5
Jun qtr	33.8	27.7	38.1	99.6
Sep qtr	49.3	29.1	42.7	121.1
Dec qtr	60.9	24.6	42.5	127.9
<b>1998</b>				
Mar qtr	63.6	24.3	47.1	135.0
Jun qtr	28.5	34.0	58.4	121.0
<b>EMPLOYMENT</b>				
	no.	no.	no.	no.
<b>1997</b>				
Mar qtr	2 367	2 219	3 044	7 630
Jun qtr	2 341	2 127	3 114	7 582
Sep qtr	2 661	2 028	3 082	7 771
Dec qtr	3 178	1 829	3 183	8 190
<b>1998</b>				
Mar qtr	3 242	1 829	3 315	8 386
Jun qtr	2 072	2 452	3 980	8 504

## TOURIST ACCOMMODATION

### INTRODUCTION

The statistics presented in this section are from the Quarterly Survey of Tourist Accommodation (STA). The data presented here are for hotels, motels, guest houses and serviced apartments with 15 or more rooms or units. As a result of the changes to the STA as outlined in the March quarter issue of this publication, there is a break in all time series presented in tables and graphs between the December quarter 1996 and the March quarter 1997.

Please refer to paragraphs 3 to 7 of the Explanatory Notes.

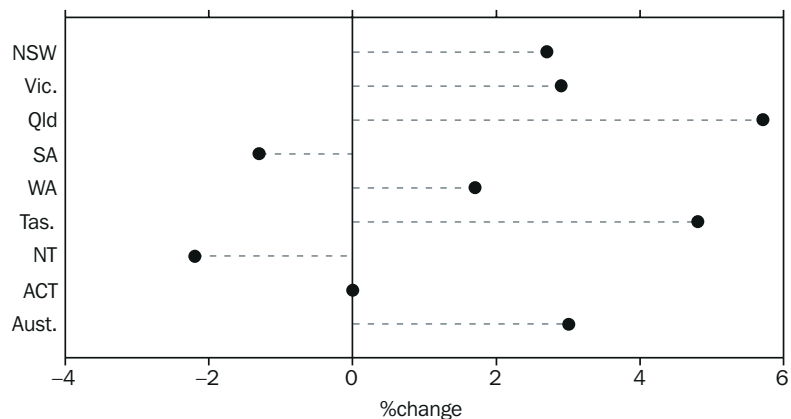
### AUSTRALIA

**Establishments** There were 3,628 accommodation establishments with 15 or more rooms at the end of June 1998, an increase of 107, or 3% compared with the same time in 1997.

The number of accommodation establishments increased in all States and Territories since June 1997, except for South Australia and the Northern Territory, which showed slight decreases.

Queensland continued to show strong growth in the number of establishments, with an increase of 6% or 49 establishments, between June 1997 and June 1998.

NUMBER OF ESTABLISHMENTS, JUN QTR 1997–JUN QTR 1998



**Guest rooms** The total number of guest rooms continued to grow, increasing by 8,708, or 5% over the 12 months to June 1998. The number of additional serviced apartment units that became available in these establishments increased by 3,174 or 16%, to 22,671. In absolute terms the number of guest rooms in licensed hotels with facilities showed the largest increase of 4,407, or 7%.

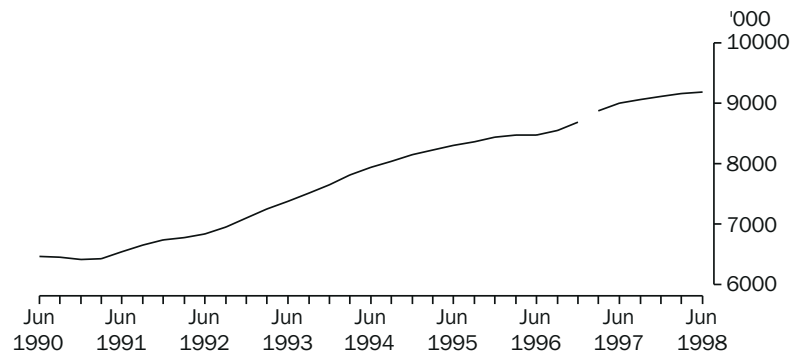
The average number of rooms per establishments increased slightly over the previous 12 months to be 49 at the end of June 1998.

Room nights occupied

The quarterly room nights occupied for Australia in trend terms, for the June quarter 1998, were 9.2 million, an increase of 182,600 or 2% compared with the June quarter in 1997, and almost no change compared with the March quarter 1998. In original terms, the quarterly room nights occupied have increased by 3% across Australia. The average nightly rooms occupied per establishment remained stable between the June quarter 1997 and the June quarter 1998 at 26.5.

In the trend graph shown below, quarterly room nights occupied have steadily increased through the 1990s, however in the two quarters for 1998 this has levelled.

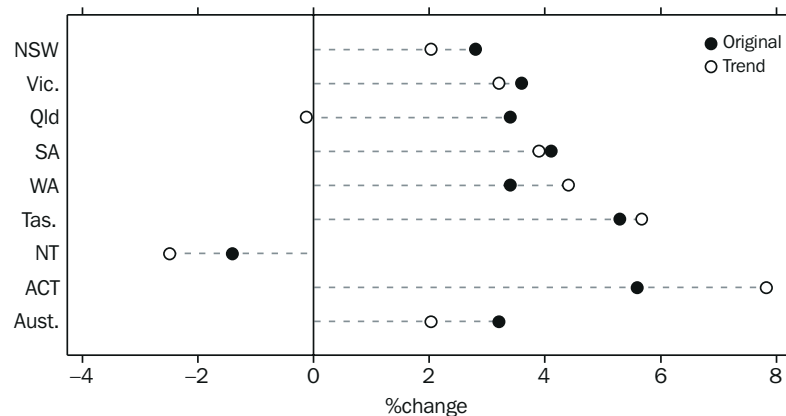
QUARTERLY ROOM NIGHTS OCCUPIED—AUST: TREND



Note: There is a break in series between December quarter 1996 and March quarter 1997 because of scope changes to STA. Refer to Explanatory Notes, paragraphs 3 to 7.

All States and Territories showed increases in the number of room nights occupied in trend terms in the June quarter 1998, compared with the June quarter 1997. The exceptions were the Northern Territory where room nights occupied decreased by just over 2%, and Queensland where the number remained almost the same.

QUARTERLY ROOM NIGHTS OCCUPIED—JUN QTR 1997—JUN QTR 1998



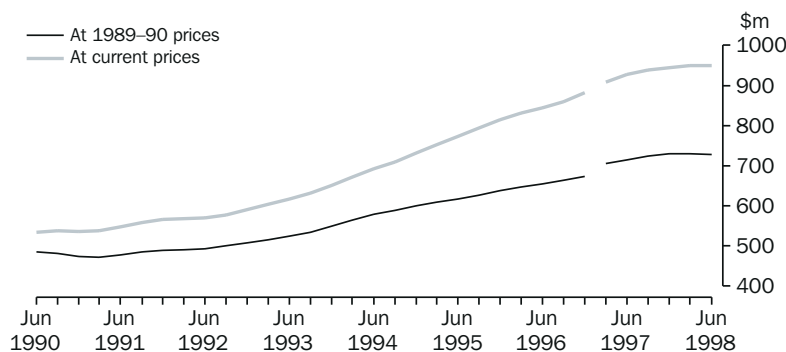
Guests

The nightly number of guests per occupied room in June quarter 1998 were 1.7, with serviced apartments having the highest average of 2.1. The average length of stay for guests during the June quarter 1998 was 2.1 nights.

Takings from accommodation

The trend estimate for takings from accommodation establishments in the June quarter 1998 was \$950 million. This was an increase compared with the June quarter 1997 of just over 2%, and a decrease over the March quarter 1998 of less than 1%. In 1989–90 price terms the trend estimate for takings from accommodation decreased by less than 1% over the March quarter 1998, but increased by nearly 2% compared with the same time in 1997.

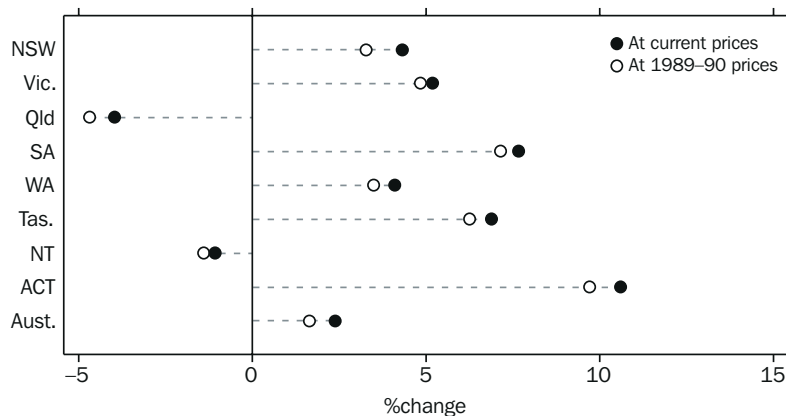
QUARTERLY TAKINGS FROM ACCOMMODATION—AUST: TREND



Note: There is a break in series between December quarter 1996 and March quarter 1997 because of scope changes to the STA. Refer to Explanatory Notes, paragraphs 3 to 7.

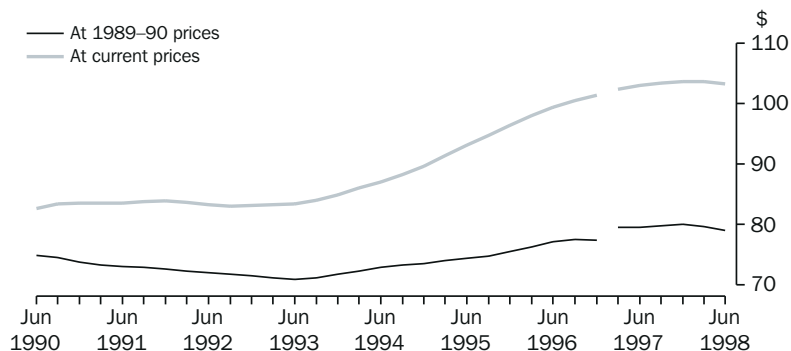
All States and Territories, except for Queensland and the Northern Territory, showed increases in the trend estimate for quarterly takings between the June quarter 1997 and the June quarter 1998. The takings for the Australian Capital Territory, South Australia, Tasmania and Victoria all showed increases in takings of 5% or greater at both current and constant prices. Takings from accommodation establishments in New South Wales showed the largest increases in current price dollar terms to be \$338 million in the June quarter 1998, an increase of 4.3% over the same time last year. Takings in Queensland decreased in trend terms between the June quarters at both current (down 4%) and constant prices (down 5%).

QUARTERLY TAKINGS—JUN QTR 1997—JUN QTR 1998: TREND



Takings per room night occupied The average takings per room night occupied in trend terms for Australia since 1997 have flattened, compared with the steady increase between 1993 and 1996, and have decreased between the March quarter 1998 and the June quarter 1998, in both current and constant price terms. For the June quarter 1998, average takings per room night occupied decreased by \$1 to be \$103 in current price terms.

AVERAGE TAKINGS PER ROOM NIGHT OCCUPIED—AUST: TREND



Note: There is a break in series between December quarter 1996 and March quarter 1997 because of scope changes to STA. Refer to Explanatory Notes, paragraphs 3 to 7.

# 1

## HOTELS, MOTELS GUEST HOUSES AND SERVICED APARTMENTS—AUST.(a)

	Room nights occupied(b)			Takings at current prices(b)			Takings at average 1989-90 prices(c)		
	Original	Seasonally adjusted	Trend	Original	Seasonally adjusted	Trend	Original	Seasonally adjusted	Trend
	'000	'000	'000	\$m	\$m	\$m	\$m	\$m	\$m
<b>1988</b>	24 994.9	24 894.3	24 939.1	1 851.9	1 843.7	1 848.9	1 916.7	1 909.1	1 916.2
<b>1989</b>	24 808.4	24 823.7	24 865.4	1 939.5	1 941.7	1 949.2	1 870.1	1 873.3	1 883.1
<b>1990</b>	25 755.7	25 778.2	25 696.3	2 138.3	2 140.0	2 126.9	1 924.4	1 926.6	1 917.0
<b>1991</b>	26 417.8	26 399.7	26 372.4	2 211.7	2 209.6	2 207.8	1 929.0	1 927.4	1 925.1
<b>1992</b>	27 736.6	27 656.0	27 696.3	2 307.3	2 300.1	2 306.6	1 993.5	1 987.4	1 992.2
<b>1993</b>	29 834.6	29 844.4	29 810.1	2 503.1	2 503.3	2 503.4	2 124.0	2 124.3	2 125.2
<b>1994</b>	31 948.5	31 962.2	31 944.4	2 807.9	2 808.2	2 804.9	2 336.5	2 337.4	2 333.2
<b>1995</b>	33 278.7	33 316.9	33 341.3	3 124.9	3 127.3	3 132.5	2 482.9	2 485.5	2 490.8
<b>1996</b>	34 171.5	34 130.9	34 212.6	3 412.9	3 409.0	3 417.8	2 641.1	2 638.2	2 639.2
<b>1997</b>	36 182.9	36 157.7	36 059.8	3 727.9	3 728.9	3 718.7	2 875.9	2 876.8	2 873.7
<b>1997</b>									
Mar qtr	8 982.1	9 054.6	8 875.1	930.5	930.7	908.6	715.3	715.6	705.7
Jun qtr	8 452.5	8 902.5	9 005.7	854.8	916.6	927.5	659.2	706.9	715.5
Sep qtr	9 309.0	9 075.2	9 064.2	955.3	937.0	937.7	739.5	725.3	723.3
Dec qtr	9 439.3	9 125.4	9 114.8	987.3	944.6	944.9	761.9	729.0	729.2
<b>1998</b>									
Mar qtr	9 056.0	9 179.5	9 169.6	955.5	959.1	950.3	734.9	737.7	730.8
Jun qtr	8 724.6	9 177.1	9 188.3	881.1	940.9	949.5	674.3	720.0	727.2

(a) There is a break in series between December quarter 1996 and March quarter 1997 because of scope changes in the STA. Refer to Explanatory Notes, paragraphs 3 to 7.

(b) For presentation purposes, the quarterly seasonally adjusted and trend estimates for room nights occupied and takings at current prices have been derived by summing the relevant monthly figures. However the graphs show the data plotted on a quarterly basis for the years 1990 to 1998.

(c) The deflator used to revalue current price data in this table is the Consumer Price Index. See paragraphs 8 to 10 of the Explanatory Notes.

## 2

## ACCOMMODATION ESTABLISHMENTS—AUST.

	Licensed hotels with facilities	Motels and guest houses	Serviced apart- ments	Star grading						Total
				1	2	3	4	5	Ungraded	
ESTABLISHMENTS AND CAPACITY										
	no.	no.	no.	no.	no.	no.	no.	no.	no.	no.
<b>Jun qtr 1997</b>										
Establishments	727	2 348	446	65	690	1 824	385	52	505	3 521
Guest rooms	65 612	82 275	19 497	1 888	20 289	71 058	39 774	14 096	20 279	167 384
Rooms per establishment	90	35	44	29	29	39	103	271	40	48
<b>Jun qtr 1998</b>										
Establishments	750	2 376	502	61	631	1 895	505	60	476	3 628
Guest rooms	70 019	83 402	22 671	1 767	18 934	71 573	46 629	15 207	21 982	176 092
Rooms per establishment	93	35	45	29	30	38	92	254	46	49
AVERAGE NIGHTLY ROOMS OCCUPIED PER ESTABLISHMENT										
	no.	no.	no.	no.	no.	no.	no.	no.	no.	no.
<b>1997</b>										
Jun qtr	54.2	18.3	24.2	8.7	13.3	21.2	66.1	183.5	19.4	26.5
<b>1998</b>										
Apr	56.3	19.6	27.2	9.7	14.5	21.8	58.8	176.3	23.2	28.2
May	53.4	17.8	23.5	8.6	13.2	19.5	55.0	170.8	21.4	25.9
Jun	51.5	17.4	24.6	8.9	13.1	19.2	54.3	155.3	21.9	25.4
Jun qtr	53.7	18.2	25.1	9.1	13.6	20.1	56.0	167.5	22.1	26.5
AVERAGE NIGHTLY GUESTS PER OCCUPIED ROOM										
	no.	no.	no.	no.	no.	no.	no.	no.	no.	no.
<b>1997</b>										
Jun qtr	1.6	1.7	n.a.	n.a.	n.a.	n.a.	n.a.	n.a.	n.a.	n.a.
<b>1998</b>										
Apr	1.7	1.8	2.3	1.8	1.8	1.9	1.8	1.6	1.8	1.8
May	1.6	1.7	2.0	1.6	1.7	1.7	1.6	1.5	1.7	1.7
Jun	1.6	1.7	2.1	1.8	1.8	1.8	1.7	1.6	1.8	1.7
Jun qtr	1.6	1.7	2.1	1.8	1.8	1.8	1.7	1.6	1.8	1.7
AVERAGE LENGTH OF STAY										
	days	days	days	days	days	days	days	days	days	days
<b>1997</b>										
Jun qtr	2.3	1.8	n.a.	n.a.	n.a.	n.a.	n.a.	n.a.	n.a.	n.a.
<b>1998</b>										
Apr	2.3	1.8	3.5	2.2	1.9	2.0	2.4	2.7	2.4	2.2
May	2.2	1.8	3.3	1.9	1.8	1.9	2.3	2.5	2.3	2.1
Jun	2.2	1.8	3.4	2.0	1.8	2.0	2.3	2.5	2.3	2.1
Jun qtr	2.3	1.8	3.4	2.0	1.8	1.9	2.3	2.6	2.4	2.1



## 3

## TAKINGS, ACCOMMODATION ESTABLISHMENTS—AUST.

	Licensed hotels with facilities	Motels and guest houses	Serviced apart- ments	Star grading						Ungraded	Total
				1	2	3	4	5			
TAKINGS FROM ACCOMMODATION											
	\$'000	\$'000	\$'000	\$'000	\$'000	\$'000	\$'000	\$'000	\$'000	\$'000	
<b>1997</b>											
Jun qtr	460 689	294 557	99 561	2 145	46 108	279 989	283 291	158 447	84 827	854 807	
<b>1998</b>											
Apr	161 290	108 244	44 538	801	16 974	99 214	106 114	58 275	32 695	314 072	
May	156 855	98 980	38 563	717	15 101	89 385	101 128	57 587	30 479	294 397	
Jun	140 384	94 375	37 856	709	14 659	85 034	94 032	48 064	30 118	272 615	
Jun qtr	458 529	301 599	120 958	2 227	46 734	273 632	301 274	163 926	93 292	881 085	
AVERAGE TAKINGS PER ESTABLISHMENT											
	\$'000	\$'000	\$'000	\$'000	\$'000	\$'000	\$'000	\$'000	\$'000	\$'000	
<b>1997</b>											
Jun qtr	633.7	125.5	223.2	33.0	66.8	153.5	735.8	3 047.1	168.0	242.8	
<b>1998</b>											
Apr	215.1	45.6	88.7	13.1	26.9	52.4	210.1	971.3	68.7	86.6	
May	209.1	41.7	76.8	11.8	23.9	47.2	200.3	959.8	64.0	81.1	
Jun	187.2	39.7	75.4	11.6	23.2	44.9	186.2	801.1	63.3	75.1	
Jun qtr	611.4	126.9	241.0	36.5	74.1	144.4	596.6	2 732.1	196.0	242.9	
AVERAGE TAKINGS PER ROOM NIGHT OCCUPIED											
	\$	\$	\$	\$	\$	\$	\$	\$	\$	\$	
<b>1997</b>											
Jun qtr	129	76	102	42	55	80	122	185	97	101	
<b>1998</b>											
Apr	129	78	109	45	62	81	120	184	101	103	
May	127	76	106	44	59	78	117	181	98	101	
Jun	121	76	102	44	59	78	114	172	97	99	
Jun qtr	126	77	106	44	60	79	117	179	99	101	
AVERAGE TAKINGS PER ROOM NIGHT AVAILABLE											
	\$	\$	\$	\$	\$	\$	\$	\$	\$	\$	
<b>1997</b>											
Jun qtr	77	40	56	13	25	43	78	125	47	56	
<b>1998</b>											
Apr	78	43	66	15	30	46	76	128	51	60	
May	73	38	55	13	26	40	70	122	45	54	
Jun	67	38	56	13	26	40	67	105	46	52	
Jun qtr	72	40	59	14	27	42	71	119	47	55	
AVERAGE TAKINGS PER GUEST NIGHT											
	\$	\$	\$	\$	\$	\$	\$	\$	\$	\$	
<b>1997</b>											
Jun qtr	81	44	n.a.	n.a.	n.a.	n.a.	n.a.	n.a.	n.a.	n.a.	
<b>1998</b>											
Apr	77	43	48	24	34	43	66	111	56	57	
May	82	45	52	27	34	46	71	119	58	61	
Jun	75	44	48	25	34	44	67	111	55	57	
Jun qtr	78	44	50	25	34	44	68	114	56	58	

NEW SOUTH WALES

There were 1,265 accommodation establishments in New South Wales at the end of June 1998, an increase of 33 (3%) since June 1997. During this period the number of guest rooms available grew by 5%, to 56,425, and the average number of rooms per establishment increased from 44 to 45 rooms.

During the June quarter 1998, the average nightly number of rooms occupied was 25.1, with an average of 1.7 nightly guests per room. At 2.9 nights, the average length of stay was longest in serviced apartments, compared to 2.3 nights in licensed hotels with facilities, and 1.7 nights in motels and guest houses.

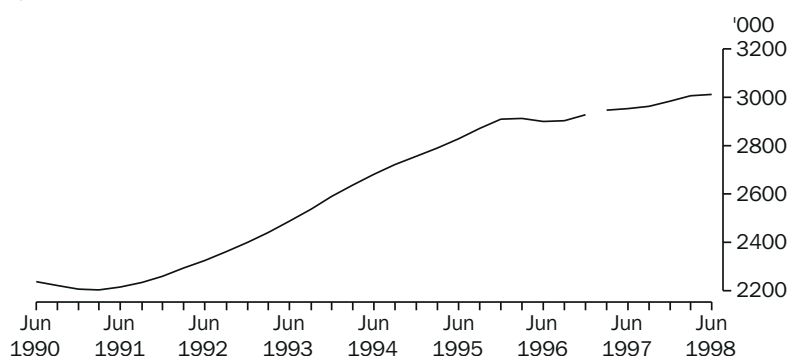
For the June quarter 1998 the total takings from all accommodation establishments were \$316.7 million, at an average of \$250,400 per establishment. This represented a 4% increase in total takings since the June quarter 1997, and a 2% increase in takings per establishment. Of all types of accommodation, serviced apartments had the highest percentage increase in average takings (up 13% to \$295,900 per establishment).

Between the June quarters 1997 and 1998 average takings per room night occupied increased from \$108 to \$110, while average takings per room night available remained at \$62. Average takings per guest night for all establishments were \$64. As might be expected, average takings per guest night were highest in five star establishments (\$133) and lowest in those with a one star grading (\$29).

Room nights occupied

The trend estimate for quarterly number of room nights occupied steadily increased from 1991 to the March quarter 1996 to be 2.9 million. Since then the rate of increase has slowed considerably. In the June quarter 1998, the number of room nights occupied was 3 million, a 2% increase over the June quarter 1997.

QUARTERLY ROOM NIGHTS OCCUPIED—NSW: TREND

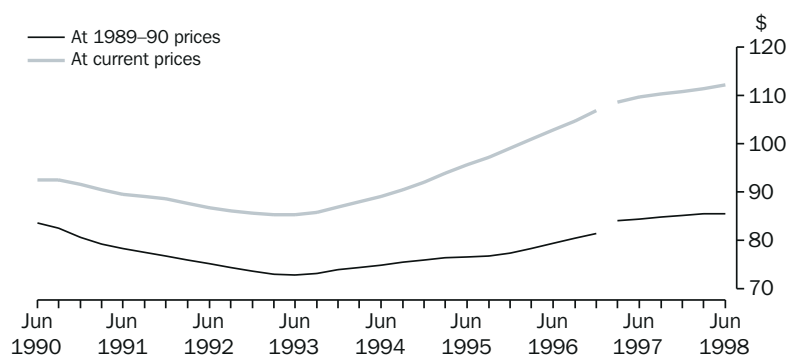


Note: There is a break in series between December quarter 1996 and March quarter 1997 because of scope changes to STA. Refer to Explanatory Notes, paragraph 3 to 7.

Takings per room night occupied

Throughout the latter half of the 1990s average takings per room night occupied for New South Wales have increased steadily in both current and 1989–90 terms. In the June quarter of 1998 average takings per room night occupied were \$112 in current terms and \$86 in 1989–90 terms, both unchanged from the previous quarter. The June quarter figures continue the trend of recent quarters toward a levelling off of growth in both current and 1989–90 terms.

AVERAGE TAKINGS PER ROOM NIGHT OCCUPIED—NSW: TREND



Note: There is a break in series between December quarter 1996 and March quarter 1997 because of scope changes to STA. Refer to Explanatory Notes, paragraphs 3 to 7.

## 4

### HOTELS, MOTELS GUEST HOUSES AND SERVICED APARTMENTS—NSW(a)

	Room nights occupied(b)			Takings at current prices(b)			Takings at average 1989–90 prices(c)		
	Original	Seasonally adjusted	Trend	Original	Seasonally adjusted	Trend	Original	Seasonally adjusted	Trend
	'000	'000	'000	\$m	\$m	\$m	\$m	\$m	\$m
<b>1988</b>	8 660.9	8 638.4	8 629.2	719.1	717.2	715.1	745.1	743.4	743.0
<b>1989</b>	8 631.7	8 627.2	8 639.0	759.8	760.6	765.1	732.3	733.3	736.5
<b>1990</b>	8 878.2	8 895.5	8 907.2	818.8	820.9	819.3	735.4	737.4	736.2
<b>1991</b>	8 928.1	8 932.5	8 917.6	798.6	799.3	797.5	696.5	697.2	695.6
<b>1992</b>	9 389.7	9 370.4	9 388.6	812.6	811.2	812.8	702.7	701.6	702.6
<b>1993</b>	10 065.0	10 074.9	10 064.9	863.7	864.5	864.5	736.1	736.8	737.1
<b>1994</b>	10 817.2	10 820.6	10 800.7	972.9	973.7	971.5	814.4	815.1	813.0
<b>1995</b>	11 363.4	11 377.8	11 403.1	1 097.1	1 098.4	1 100.9	873.1	874.2	876.5
<b>1996</b>	11 654.8	11 636.1	11 647.1	1 209.5	1 207.8	1 209.7	933.1	931.8	931.5
<b>1997</b>	11 887.1	11 874.7	11 853.1	1 303.6	1 305.4	1 302.5	1 003.5	1 005.0	1 004.0
<b>1997</b>									
Mar qtr	3 030.9	2 992.7	2 948.0	334.5	326.0	320.3	256.5	250.0	247.8
Jun qtr	2 810.3	2 931.1	2 954.8	303.3	323.9	324.2	233.5	249.4	249.6
Sep qtr	2 964.9	2 941.9	2 963.7	322.1	320.9	326.9	248.7	247.8	251.7
Dec qtr	3 081.0	3 009.0	2 986.6	343.7	334.6	331.1	264.8	257.8	254.9
<b>1998</b>									
Mar qtr	3 017.3	3 015.7	3 007.5	343.2	337.8	335.4	263.0	258.8	257.1
Jun qtr	2 890.3	2 996.2	3 014.7	316.7	334.2	338.2	241.4	254.7	257.7

(a) There is a break in series between December quarter 1996 and March quarter 1997 because of scope changes in the STA. Refer to Explanatory Notes, paragraphs 3 to 7.

(b) For presentation purposes, the quarterly seasonally adjusted and trend estimates for room nights occupied and takings at current prices have been derived by summing the relevant monthly figures. However the graphs show the data plotted on a quarterly basis for the years 1990 to 1998.

(c) The deflator used to revalue current price data in this table is the Sydney All Groups Consumer Price Index. See paragraphs 8 to 10 of the Explanatory Notes.

## 5

## ACCOMMODATION ESTABLISHMENTS—NSW

	Licensed hotels with facilities	Motels and guest houses	Serviced apartments	Star grading						Total
				1	2	3	4	5	Ungraded	
ESTABLISHMENTS AND CAPACITY										
	no.	no.	no.	no.	no.	no.	no.	no.	no.	no.
<b>Jun qtr 1997</b>										
Establishments	167	960	105	28	221	698	116	14	155	1 232
Guest rooms	18 275	30 845	4 576	882	6 037	24 910	n.p.	n.p.	6 022	53 696
Rooms per establishment	109	32	44	32	27	36	n.p.	n.p.	39	44
<b>Jun qtr 1998</b>										
Establishments	176	973	116	32	220	678	128	13	194	1 265
Guest rooms	19 876	31 526	5 023	1 074	6 473	23 834	12 768	3 590	8 686	56 425
Rooms per establishment	113	32	43	34	29	35	100	276	45	45
AVERAGE NIGHTLY ROOMS OCCUPIED PER ESTABLISHMENT										
	no.	no.	no.	no.	no.	no.	no.	no.	no.	no.
<b>1997</b>										
Jun qtr	74.0	16.6	24.4	8.5	12.1	20.1	n.p.	n.p.	17.5	25.1
<b>1998</b>										
Apr	77.1	18.6	29.1	10.4	15.5	21.4	72.4	223.1	24.1	27.7
May	70.1	16.3	23.7	8.7	13.4	18.8	65.5	199.1	20.4	24.4
Jun	65.9	15.5	23.2	9.0	12.8	17.9	61.2	178.6	20.9	23.3
Jun qtr	71.1	16.8	25.3	9.4	13.9	19.3	66.4	200.2	21.8	25.1
AVERAGE NIGHTLY GUESTS PER OCCUPIED ROOM										
	no.	no.	no.	no.	no.	no.	no.	no.	no.	no.
<b>1997</b>										
Jun qtr	1.5	1.8	n.a.	n.a.	n.a.	n.a.	n.a.	n.a.	n.a.	n.a.
<b>1998</b>										
Apr	1.6	1.8	2.2	1.9	1.9	1.9	1.7	1.6	1.8	1.8
May	1.5	1.7	1.9	1.7	1.8	1.7	1.6	1.5	1.7	1.6
Jun	1.6	1.7	2.0	1.8	1.8	1.7	1.6	1.6	1.7	1.7
Jun qtr	1.6	1.8	2.0	1.8	1.8	1.8	1.6	1.6	1.8	1.7
AVERAGE LENGTH OF STAY										
	days	days	days	days	days	days	days	days	days	days
<b>1997</b>										
Jun qtr	2.4	1.7	n.a.	n.a.	n.a.	n.a.	n.a.	n.a.	n.a.	n.a.
<b>1998</b>										
Apr	2.4	1.7	3.1	2.1	1.8	1.8	2.2	2.4	2.4	2.0
May	2.2	1.6	2.9	1.9	1.8	1.7	2.1	2.2	2.2	1.9
Jun	2.2	1.6	2.9	1.9	1.8	1.7	2.1	2.2	2.2	1.9
Jun qtr	2.3	1.7	2.9	2.0	1.8	1.7	2.2	2.3	2.3	1.9

## 6

## TAKINGS, ACCOMMODATION ESTABLISHMENTS—NSW

	Licensed hotels with facilities	Motels and guest houses	Serviced apartments	Star grading					Ungraded	Total
				1	2	3	4	5		
TAKINGS FROM ACCOMMODATION										
	\$'000	\$'000	\$'000	\$'000	\$'000	\$'000	\$'000	\$'000	\$'000	\$'000
<b>1997</b>										
Jun qtr	164 634	111 070	27 609	942	13 304	106 015	n.p.	n.p.	29 903	303 313
<b>1998</b>										
Apr	60 742	43 152	13 304	527	6 621	37 215	37 662	18 600	16 573	117 198
May	56 426	37 590	10 886	462	5 607	33 359	34 643	16 819	14 012	104 902
Jun	49 345	35 148	10 129	447	5 263	30 546	30 660	13 999	13 707	94 621
Jun qtr	166 513	115 889	34 319	1 435	17 491	101 120	102 965	49 418	44 293	316 721
AVERAGE TAKINGS PER ESTABLISHMENT										
	\$'000	\$'000	\$'000	\$'000	\$'000	\$'000	\$'000	\$'000	\$'000	\$'000
<b>1997</b>										
Jun qtr	985.8	115.7	262.9	33.7	60.2	151.9	n.p.	n.p.	192.9	246.2
<b>1998</b>										
Apr	345.1	44.3	114.7	16.5	30.1	54.9	294.2	1 430.7	85.4	92.6
May	320.6	38.6	93.8	14.4	25.5	49.2	270.6	1 293.8	72.2	82.9
Jun	280.4	36.1	87.3	14.0	23.9	45.1	239.5	1 076.8	70.7	74.8
Jun qtr	946.1	119.1	295.9	44.9	79.5	149.1	804.4	3 801.3	228.3	250.4
AVERAGE TAKINGS PER ROOM NIGHT OCCUPIED										
	\$	\$	\$	\$	\$	\$	\$	\$	\$	\$
<b>1997</b>										
Jun qtr	146	76	119	43	55	83	n.p.	n.p.	121	108
<b>1998</b>										
Apr	149	80	132	53	65	86	136	214	119	112
May	148	77	128	54	62	84	133	210	115	110
Jun	142	78	126	52	63	84	131	201	113	107
Jun qtr	146	78	129	53	63	85	133	209	116	110
AVERAGE TAKINGS PER ROOM NIGHT AVAILABLE										
	\$	\$	\$	\$	\$	\$	\$	\$	\$	\$
<b>1997</b>										
Jun qtr	99	40	66	12	24	47	n.p.	n.p.	55	62
<b>1998</b>										
Apr	102	46	88	16	34	52	98	173	64	69
May	92	39	70	14	28	45	88	151	52	60
Jun	83	37	67	14	27	43	80	130	53	56
Jun qtr	92	41	75	15	30	47	89	151	56	62
AVERAGE TAKINGS PER GUEST NIGHT										
	\$	\$	\$	\$	\$	\$	\$	\$	\$	\$
<b>1997</b>										
Jun qtr	96	44	n.a.	n.a.	n.a.	n.a.	n.a.	n.a.	n.a.	n.a.
<b>1998</b>										
Apr	91	43	60	27	34	46	80	132	65	62
May	96	46	67	31	35	50	85	137	69	67
Jun	89	45	63	28	34	49	81	129	66	63
Jun qtr	92	45	63	29	34	48	82	133	66	64

VICTORIA

At the end of June 1998 there were 669 accommodation establishments in Victoria, 19 more than at the same time in the previous year. During this period the total number of guest rooms available increased by 1,680 (6%) to 28,850 rooms, and the number of rooms per establishment increased from 42 to 43 rooms.

The average nightly number of rooms occupied per establishment for the June quarter 1998 was 23.3, unchanged from the corresponding quarter of 1997. There was a nightly average of 1.7 guests per occupied room, who stayed an average of 2.0 nights. The average length of stay was longest in serviced apartments (3.5 nights) and shortest in motels and guest houses (1.8 nights).

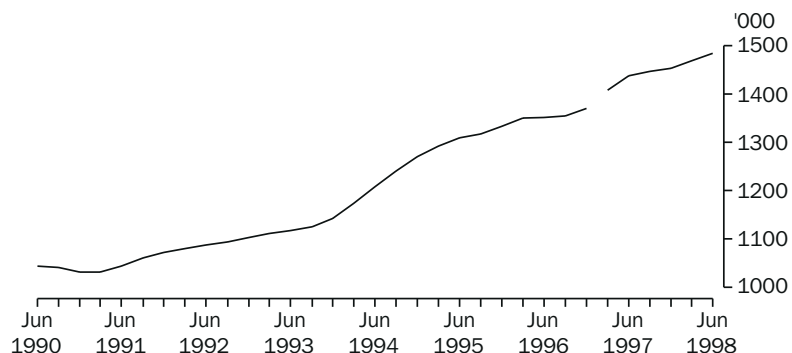
For the June quarter 1998, takings from accommodation establishments totalled \$153.2 million, an increase of 5% over the June quarter 1997. This represented an average of \$229,100 per establishment. The highest percentage growth in average takings per establishment occurred in one star accommodation (up 18% to \$11,900). In contrast, during the same period, average takings per establishment declined for both four (down 6%) and five star accommodation (down 8%).

The average takings per room night occupied for the June quarter 1998 were \$108, slightly higher than for June quarter of the previous year (\$107). However, during the same period average takings per room night available decreased from \$59 to \$58. The largest decrease in average takings per room night available occurred in ungraded accommodation, which dropped by almost 25% from \$47 to \$35.

Room nights occupied

During the June quarter 1998, the number of room nights occupied in Victoria's accommodation establishments was 1.5 million, an increase in trend terms of 1% since the previous quarter. This growth continues a trend that has seen the number of room nights occupied increase in every quarter since the March quarter 1991.

QUARTERLY ROOM NIGHTS OCCUPIED—VIC: TREND

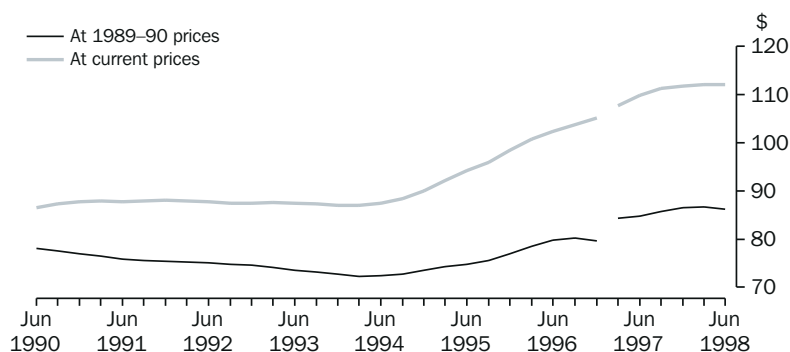


Note: There is a break in series between December quarter 1996 and March quarter 1997 because of scope changes to STA. Refer to Explanatory Notes, paragraphs 3 to 7.

Takings per room night occupied

Average takings per room night occupied have risen steadily since the mid 1990s. For the June quarter 1998, the average takings per room night occupied were \$112 in current terms and \$86 in 1989–90 terms. While this represented a decrease of less than 1% over the March quarter 1998, it was the first quarterly decrease since the December quarter 1996 in 1989–90 terms, and the March quarter of 1994 in current terms.

AVERAGE TAKINGS PER ROOM NIGHT OCCUPIED—VIC: TREND



Note: There is a break in series between December quarter 1996 and March quarter 1997 because of scope changes to the STA. Refer to Explanatory Notes, paragraphs 3 to 7.

## 7

### HOTELS, MOTELS GUEST HOUSES AND SERVICED APARTMENTS—VIC.(a)

	Room nights occupied(b)			Takings at current prices(b)			Takings at average 1989–90 prices(c)		
	Original	Seasonally adjusted	Trend	Original	Seasonally adjusted	Trend	Original	Seasonally adjusted	Trend
	'000	'000	'000	\$m	\$m	\$m	\$m	\$m	\$m
<b>1988</b>	3 838.0	3 824.9	3 809.2	280.2	279.4	279.4	290.2	289.4	289.4
<b>1989</b>	4 141.5	4 153.9	4 172.2	333.1	334.6	335.5	320.7	322.1	322.9
<b>1990</b>	4 161.6	4 165.9	4 156.2	361.5	361.9	360.2	323.6	324.0	322.7
<b>1991</b>	4 209.1	4 212.3	4 209.8	369.1	369.4	370.2	318.4	318.8	319.2
<b>1992</b>	4 367.6	4 358.9	4 365.9	382.5	381.9	382.5	327.3	326.9	327.1
<b>1993</b>	4 490.5	4 497.2	4 498.1	391.6	392.8	392.7	328.8	329.8	329.9
<b>1994</b>	4 890.8	4 894.0	4 894.6	432.5	432.4	431.8	356.8	356.8	356.1
<b>1995</b>	5 248.4	5 257.3	5 254.9	497.7	499.2	500.1	394.0	395.2	396.4
<b>1996</b>	5 411.1	5 409.6	5 431.1	555.6	556.2	559.4	431.2	431.5	432.2
<b>1997</b>	5 754.3	5 757.0	5 747.4	634.8	634.8	633.1	490.3	490.2	490.4
<b>1997</b>									
Mar qtr	1 494.3	1 437.0	1 407.9	165.1	157.0	151.6	127.2	120.9	118.7
Jun qtr	1 365.9	1 432.7	1 438.6	145.4	156.3	158.1	112.2	120.6	122.0
Sep qtr	1 410.1	1 460.3	1 447.7	160.2	162.9	160.9	124.1	126.2	124.0
Dec qtr	1 484.0	1 427.0	1 453.2	164.1	158.6	162.5	126.8	122.5	125.7
<b>1998</b>									
Mar qtr	1 534.1	1 483.9	1 469.3	175.6	168.3	164.7	135.8	130.2	127.2
Jun qtr	1 415.7	1 487.7	1 484.6	153.2	164.9	166.3	117.9	126.8	127.9

(a) There is a break in series between December quarter 1996 and March quarter 1997 because of scope changes in the STA. Refer to Explanatory Notes, paragraphs 3 to 7.

(b) For presentation purposes, the quarterly seasonally adjusted and trend estimates for room nights occupied and takings at current prices have been derived by summing the relevant monthly figures. However the graphs show the data plotted on a quarterly basis for the years 1990 to 1998.

(c) The deflator used to revalue current price data in this table is the Melbourne All Groups Consumer Price Index. See paragraphs 8 to 10 of the Explanatory Notes.

	Licensed hotels with facilities	Motels and guest houses	Serviced apartments	Star grading						Total
				1	2	3	4	5	Ungraded	
ESTABLISHMENTS AND CAPACITY										
	no.	no.	no.	no.	no.	no.	no.	no.	no.	no.
<b>Jun qtr 1997</b>										
Establishments	116	494	40	5	92	369	89	10	85	650
Guest rooms	9 204	16 129	1 837	93	2 806	11 042	7 141	2 962	3 126	27 170
Rooms per establishment	79	33	46	19	31	30	80	296	37	42
<b>Jun qtr 1998</b>										
Establishments	115	504	50	4	88	396	108	11	62	669
Guest rooms	9 856	16 391	2 603	90	2 553	12 153	8 710	2 988	2 356	28 850
Rooms per establishment	86	33	52	23	29	31	81	272	38	43
AVERAGE NIGHTLY ROOMS OCCUPIED PER ESTABLISHMENT										
	no.	no.	no.	no.	no.	no.	no.	no.	no.	no.
<b>1997</b>										
Jun qtr	52.2	15.9	31.3	4.4	12.2	14.9	54.0	213.2	18.7	23.3
<b>1998</b>										
Apr	52.0	17.7	33.4	5.7	14.2	17.4	50.0	180.0	15.8	24.7
May	52.1	15.5	31.8	4.6	11.7	14.9	50.8	185.4	14.5	23.0
Jun	51.6	14.4	31.4	3.8	11.3	14.0	49.0	180.8	15.0	22.1
Jun qtr	51.9	15.8	32.2	4.7	12.4	15.5	50.0	182.1	15.1	23.3
AVERAGE NIGHTLY GUESTS PER OCCUPIED ROOM										
	no.	no.	no.	no.	no.	no.	no.	no.	no.	no.
<b>1997</b>										
Jun qtr	1.5	1.7	n.a.	n.a.	n.a.	n.a.	n.a.	n.a.	n.a.	n.a.
<b>1998</b>										
Apr	1.5	1.8	2.1	2.2	1.9	1.8	1.6	1.5	2.0	1.7
May	1.4	1.6	1.8	1.6	1.7	1.7	1.5	1.4	1.8	1.6
Jun	1.5	1.7	1.9	1.4	1.7	1.7	1.6	1.4	2.0	1.6
Jun qtr	1.5	1.7	1.9	1.8	1.8	1.8	1.6	1.4	1.9	1.7
AVERAGE LENGTH OF STAY										
	days	days	days	days	days	days	days	days	days	days
<b>1997</b>										
Jun qtr	2.1	1.8	n.a.	n.a.	n.a.	n.a.	n.a.	n.a.	n.a.	n.a.
<b>1998</b>										
Apr	2.1	1.8	3.7	2.7	2.0	1.8	2.1	2.4	2.4	2.0
May	2.1	1.7	3.5	2.2	1.9	1.8	2.0	2.4	2.3	2.0
Jun	2.1	1.7	3.4	1.7	1.8	1.8	2.0	2.3	2.2	2.0
Jun qtr	2.1	1.8	3.5	2.3	1.9	1.8	2.0	2.4	2.3	2.0



## 9

## TAKINGS, ACCOMMODATION ESTABLISHMENTS—VIC.

	Licensed hotels with facilities	Motels and guest houses	Serviced apartments	Star grading						Total
				1	2	3	4	5	Ungraded	
TAKINGS FROM ACCOMMODATION										
	\$'000	\$'000	\$'000	\$'000	\$'000	\$'000	\$'000	\$'000	\$'000	\$'000
<b>1997</b>										
Jun qtr	74 497	56 871	14 075	51	6 159	37 623	53 745	34 553	13 313	145 443
<b>1998</b>										
Apr	24 636	21 740	6 251	20	2 314	16 187	20 154	11 379	2 573	52 627
May	26 821	19 650	6 235	18	1 946	14 155	21 377	12 748	2 461	52 707
Jun	24 298	17 813	5 799	10	1 871	12 827	19 670	11 007	2 525	47 910
Jun qtr	75 755	59 203	18 286	48	6 131	43 169	61 201	35 134	7 560	153 243
AVERAGE TAKINGS PER ESTABLISHMENT										
	\$'000	\$'000	\$'000	\$'000	\$'000	\$'000	\$'000	\$'000	\$'000	\$'000
<b>1997</b>										
Jun qtr	642.2	115.1	351.9	10.1	66.9	102.0	603.9	3 455.3	156.6	223.8
<b>1998</b>										
Apr	214.2	43.1	125.0	4.9	26.3	40.9	186.6	1 034.4	41.5	78.7
May	233.2	39.0	124.7	4.6	22.1	35.7	197.9	1 158.9	39.7	78.8
Jun	211.3	35.3	116.0	2.5	21.3	32.4	182.1	1 000.7	40.7	71.6
Jun qtr	658.7	117.5	365.7	11.9	69.7	109.0	566.7	3 194.0	121.9	229.1
AVERAGE TAKINGS PER ROOM NIGHT OCCUPIED										
	\$	\$	\$	\$	\$	\$	\$	\$	\$	\$
<b>1997</b>										
Jun qtr	138	80	124	26	61	76	123	191	92	107
<b>1998</b>										
Apr	137	82	126	29	62	78	124	192	88	106
May	145	81	127	32	61	77	126	202	88	111
Jun	137	82	123	22	63	77	124	185	90	108
Jun qtr	140	81	125	28	62	78	125	193	89	108
AVERAGE TAKINGS PER ROOM NIGHT AVAILABLE										
	\$	\$	\$	\$	\$	\$	\$	\$	\$	\$
<b>1997</b>										
Jun qtr	91	39	84	6	24	38	83	137	47	59
<b>1998</b>										
Apr	83	44	81	7	30	44	77	127	37	61
May	88	39	77	7	25	38	79	138	34	59
Jun	82	36	74	4	25	35	75	123	36	55
Jun qtr	85	40	77	6	26	39	77	129	35	58
AVERAGE TAKINGS PER GUEST NIGHT										
	\$	\$	\$	\$	\$	\$	\$	\$	\$	\$
<b>1997</b>										
Jun qtr	94	47	n.a.	n.a.	n.a.	n.a.	n.a.	n.a.	n.a.	n.a.
<b>1998</b>										
Apr	89	45	61	13	33	42	76	132	45	61
May	100	49	70	19	36	46	85	144	50	70
Jun	92	48	65	15	37	45	80	132	44	66
Jun qtr	94	47	65	15	35	44	80	136	46	65

QUEENSLAND

Between June 1997 and June 1998, the number of accommodation establishments in Queensland increased by 49 (or 6%) to 857, and the total capacity of accommodation establishments increased by 3,457 (8%) to 48,547 guest rooms. Growth was most apparent in the number of four star establishments, which grew by 75% from 97 to 170. The growth in capacity in this State has not been matched by increases in demand, as outlined in the following statistics relating to occupancy and takings.

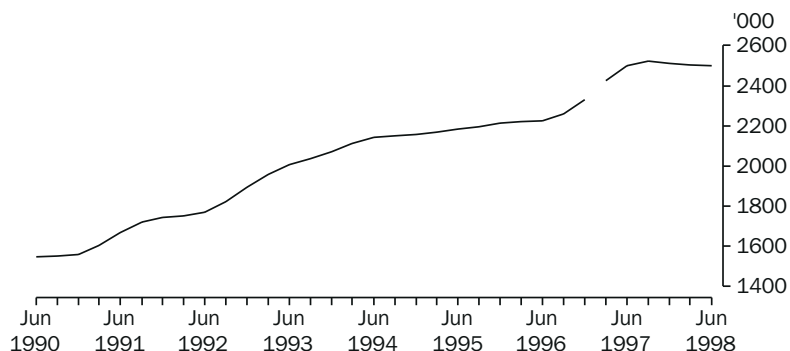
For the June quarter 1998, the average nightly number of rooms occupied per establishment was 29.0, down from 29.7 in the corresponding quarter of 1997. There were on average 1.9 nightly guests per occupied room for all establishments who stayed an average of 2.5 days. Length of stay was longest in serviced apartments (4.0 nights), followed by licensed hotels with facilities (2.5 nights).

Takings for the June quarter 1998 totalled \$222.3 million, at an average of \$245,400 per establishment. This was slightly down from the 1997 June quarter average of \$263,000 per establishment. During this period average takings per establishment decreased for both licensed hotels with facilities (down 13% to \$675,300), and motels and guest houses (down 5% to \$125,900). However, against this pattern average takings per establishment for serviced apartments increased (up 2% to \$182,500).

In the June quarter 1998, both average takings per room night occupied (\$94) and per room night available (\$51) dropped below takings for the 1997 June quarter (\$98 and \$55 respectively). Licensed hotels with facilities had the largest decreases in average takings per room night occupied (down 8% to \$117), and per room night available (down 12% to \$63). During this period licensed hotels with facilities also recorded a large decrease in average takings per guest night, dropping 9% from \$70 per guest night to \$64.

Room nights occupied Throughout the early 1990s the quarterly number of rooms occupied increased steadily. However, since 1994 growth has slowed considerably, except for a brief period between the 1996 and 1997. After declining for the previous two quarters, the quarterly number of room nights occupied for the June quarter of 1998 stabilised in trend terms at 2.5 million.

QUARTERLY ROOM NIGHTS OCCUPIED—QLD: TREND

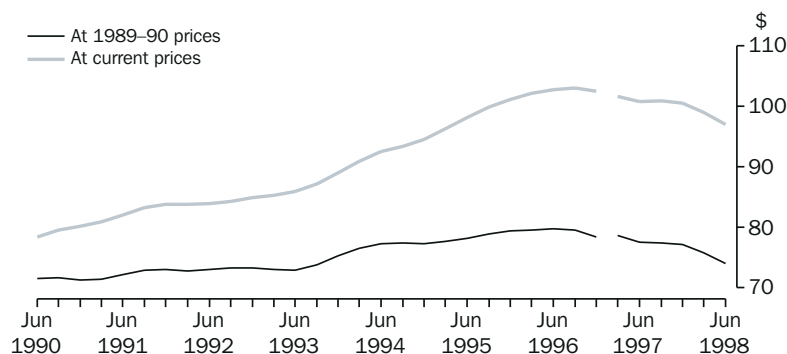


Note: There is a break in series between December quarter 1996 and March quarter 1997 because of scope changes to STA. Refer to Explanatory Notes, paragraphs 3 to 7.

Takings per room night occupied

Until the September quarter 1996 the trend estimate for average takings per room night occupied for Queensland had demonstrated a steady sustained increase, in terms of both current and 1989–90 prices. Since then, however, growth has slowed considerably. For the June quarter of 1998, average takings per room night occupied were \$97 in current prices and \$74 in 1989–90 prices. In current terms this was the third consecutive quarterly decline, and in terms of 1989–90 prices the fifth consecutive quarterly decline.

AVERAGE TAKINGS PER ROOM NIGHT OCCUPIED—QLD: TREND



Note: There is a break in series between December quarter 1996 and March quarter 1997 because of scope changes to the STA. Refer to Explanatory Notes, paragraphs 3 to 7.

## 10

### HOTELS, MOTELS GUEST HOUSES AND SERVICED APARTMENTS—QLD

	Room nights occupied(b)			Takings at current prices(b)			Takings at average 1989–90 prices(c)		
	Original	Seasonally adjusted	Trend	Original	Seasonally adjusted	Trend	Original	Seasonally adjusted	Trend
	'000	'000	'000	\$m	\$m	\$m	\$m	\$m	\$m
<b>1988</b>	6 461.5	6 406.5	6 466.7	484.0	479.3	486.2	500.4	496.0	503.1
<b>1989</b>	5 805.6	5 805.6	5 804.2	435.2	435.1	435.3	419.8	420.2	420.0
<b>1990</b>	6 230.9	6 233.5	6 179.6	493.2	492.9	486.6	446.8	446.8	441.1
<b>1991</b>	6 761.7	6 744.0	6 737.0	559.8	557.3	556.5	490.7	488.7	487.8
<b>1992</b>	7 224.9	7 192.2	7 236.8	609.4	605.8	609.9	528.8	525.7	529.1
<b>1993</b>	8 089.6	8 088.8	8 074.9	702.5	701.5	701.4	596.3	595.5	595.6
<b>1994</b>	8 566.7	8 567.5	8 561.8	797.1	796.6	795.3	661.9	661.9	660.4
<b>1995</b>	8 753.9	8 756.5	8 760.2	866.1	865.3	866.4	687.5	687.2	688.3
<b>1996</b>	9 023.0	9 011.0	9 041.7	928.2	926.5	927.9	718.5	717.1	717.2
<b>1997</b>	10 035.0	10 019.6	9 958.9	1 012.1	1 010.3	1 005.5	778.2	776.7	774.1
<b>1997</b>									
Mar qtr	2 340.4	2 484.9	2 424.3	240.4	252.1	246.5	184.4	193.3	190.7
Jun qtr	2 295.1	2 454.6	2 501.3	225.4	246.2	252.3	173.4	189.4	194.1
Sep qtr	2 771.5	2 550.9	2 521.5	273.3	257.7	254.3	210.9	198.8	195.5
Dec qtr	2 628.0	2 529.2	2 511.8	273.0	254.3	252.4	209.5	195.2	193.8
<b>1998</b>									
Mar qtr	2 302.2	2 451.6	2 505.0	234.6	246.1	248.3	179.3	188.2	189.9
Jun qtr	2 372.2	2 537.7	2 498.0	222.3	242.8	242.3	169.3	184.9	185.0

(a) There is a break in series between December quarter 1996 and March quarter 1997 because of scope changes in the STA. Refer to Explanatory Notes, paragraphs 3 to 7.

(b) For presentation purposes, the quarterly seasonally adjusted and trend estimates for room nights occupied and takings at current prices have been derived by summing the relevant monthly figures. However the graphs show the data plotted on a quarterly basis for the years 1990 to 1998.

(c) The deflator used to revalue current price data in this table is the Brisbane All Groups Consumer Price Index. See paragraphs 8 to 10 of the Explanatory Notes.

	Licensed hotels with facilities	Motels and guest houses	Serviced apart- ments	Star grading						Total
				1	2	3	4	5	Ungraded	
ESTABLISHMENTS AND CAPACITY										
	no.	no.	no.	no.	no.	no.	no.	no.	no.	no.
<b>Jun qtr 1997</b>										
Establishments	161	510	186	13	183	374	97	16	174	857
Guest rooms	18 993	18 256	7 841	295	4 973	n.p.	n.p.	n.p.	7 471	45 090
Rooms per establishment	118	36	42	23	27	n.p.	n.p.	n.p.	43	53
<b>Jun qtr 1998</b>										
Establishments	175	518	213	16	144	444	170	22	110	906
Guest rooms	20 797	18 453	9 297	400	3 785	17 228	16 308	5 055	5 771	48 547
Rooms per establishment	119	36	44	25	26	39	96	230	53	54
AVERAGE NIGHTLY ROOMS OCCUPIED PER ESTABLISHMENT										
	no.	no.	no.	no.	no.	no.	no.	no.	no.	no.
<b>1997</b>										
Jun qtr	67.2	20.7	21.9	11.0	13.6	n.p.	n.p.	n.p.	21.6	29.7
<b>1998</b>										
Apr	67.2	19.4	23.3	11.1	12.2	21.2	55.4	147.1	25.1	29.6
May	61.7	19.3	19.8	10.5	12.3	19.5	51.3	135.8	24.2	27.6
Jun	64.7	20.8	23.3	11.3	13.1	22.0	56.0	131.5	26.0	29.9
Jun qtr	64.5	19.9	22.1	11.0	12.5	20.9	54.2	138.1	25.1	29.0
AVERAGE NIGHTLY GUESTS PER OCCUPIED ROOM										
	no.	no.	no.	no.	no.	no.	no.	no.	no.	no.
<b>1997</b>										
Jun qtr	1.8	1.7	n.a.	n.a.	n.a.	n.a.	n.a.	n.a.	n.a.	n.a.
<b>1998</b>										
Apr	1.9	1.8	2.5	1.8	1.8	2.0	2.0	1.9	1.9	2.0
May	1.8	1.7	2.2	1.6	1.7	1.8	1.8	1.8	1.8	1.8
Jun	1.8	1.8	2.3	1.7	1.8	1.9	1.9	1.8	1.9	1.9
Jun qtr	1.8	1.7	2.4	1.7	1.8	1.9	1.9	1.8	1.9	1.9
AVERAGE LENGTH OF STAY										
	days	days	days	days	days	days	days	days	days	days
<b>1997</b>										
Jun qtr	2.7	2.0	n.a.	n.a.	n.a.	n.a.	n.a.	n.a.	n.a.	n.a.
<b>1998</b>										
Apr	2.6	2.0	4.3	2.2	1.8	2.4	2.7	3.4	2.9	2.6
May	2.4	2.0	3.8	1.8	1.8	2.3	2.5	3.1	2.6	2.4
Jun	2.5	2.0	4.0	2.0	1.8	2.3	2.6	3.2	2.8	2.5
Jun qtr	2.5	2.0	4.0	2.0	1.8	2.3	2.6	3.2	2.8	2.5

	Licensed hotels with facilities	Motels and guest houses	Serviced apartments	Star grading					Ungraded	Total
				1	2	3	4	5		
TAKINGS FROM ACCOMMODATION										
	\$'000	\$'000	\$'000	\$'000	\$'000	\$'000	\$'000	\$'000	\$'000	\$'000
<b>1997</b>										
Jun qtr	124 680	67 417	33 331	475	12 115	n.p.	n.p.	n.p.	27 371	225 428
<b>1998</b>										
Apr	42 751	21 268	14 219	191	3 258	20 974	29 311	18 085	6 420	78 238
May	38 029	21 410	11 763	177	3 032	18 554	26 967	16 084	6 389	71 202
Jun	37 402	22 546	12 900	179	3 066	20 682	27 670	14 495	6 756	72 848
Jun qtr	118 182	65 224	38 882	547	9 356	60 210	83 947	48 663	19 564	222 288
AVERAGE TAKINGS PER ESTABLISHMENT										
	\$'000	\$'000	\$'000	\$'000	\$'000	\$'000	\$'000	\$'000	\$'000	\$'000
<b>1997</b>										
Jun qtr	774.4	132.2	179.2	36.6	66.2	n.p.	n.p.	n.p.	157.3	263.0
<b>1998</b>										
Apr	244.3	41.1	66.8	11.9	22.6	47.2	172.4	822.0	58.4	86.4
May	217.3	41.3	55.2	11.1	21.1	41.8	158.6	731.1	58.1	78.6
Jun	213.7	43.5	60.6	11.2	21.3	46.6	162.8	658.9	61.4	80.4
Jun qtr	675.3	125.9	182.5	34.2	65.0	135.6	493.8	2 212.0	177.9	245.4
AVERAGE TAKINGS PER ROOM NIGHT OCCUPIED										
	\$	\$	\$	\$	\$	\$	\$	\$	\$	\$
<b>1997</b>										
Jun qtr	127	72	91	36	53	n.p.	n.p.	n.p.	84	98
<b>1998</b>										
Apr	124	71	96	36	62	75	104	186	83	99
May	116	70	90	34	55	70	100	174	81	93
Jun	110	70	87	33	54	71	97	167	79	90
Jun qtr	117	70	91	34	57	72	100	176	81	94
AVERAGE TAKINGS PER ROOM NIGHT AVAILABLE										
	\$	\$	\$	\$	\$	\$	\$	\$	\$	\$
<b>1997</b>										
Jun qtr	72	41	47	18	27	n.p.	n.p.	n.p.	42	55
<b>1998</b>										
Apr	70	39	51	16	29	41	60	119	40	54
May	60	38	41	14	26	35	53	103	37	48
Jun	60	41	46	15	27	40	57	96	39	50
Jun qtr	63	39	46	15	27	39	57	106	39	51
AVERAGE TAKINGS PER GUEST NIGHT										
	\$	\$	\$	\$	\$	\$	\$	\$	\$	\$
<b>1997</b>										
Jun qtr	70	42	n.a.	n.a.	n.a.	n.a.	n.a.	n.a.	n.a.	n.a.
<b>1998</b>										
Apr	66	40	39	20	35	38	52	98	43	50
May	66	42	40	22	33	39	54	99	44	51
Jun	60	39	37	19	31	37	50	94	41	47
Jun qtr	64	40	39	20	33	38	52	97	43	50

At the end of June 1998, there were 227 accommodation establishments in South Australia, three fewer than at the same time in 1997. However, during this period the number of guest rooms available increased by 294 rooms, and the number of rooms per establishment increased from 42 to 44 rooms. One star and ungraded establishments recorded the largest increase in capacity, with the average number of guest rooms available increasing by a third from 27 to 36 rooms.

For the June quarter 1998, the average nightly number of rooms occupied was 23.5, an increase of 1.5 rooms since the June quarter of the previous year. Contributing to this growth was a 60% increase for one star and ungraded accommodation, from 9.6 rooms to 15.4 rooms being occupied per night.

For accommodation establishments in the June quarter of 1998 there was an average of 1.6 nightly guests per occupied room, with guests staying an average of 1.9 nights. The longest length of stay occurred in serviced apartments (3.3 nights).

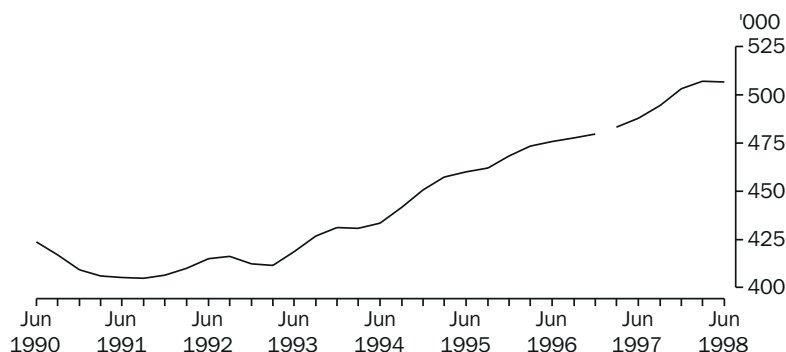
The total takings for the June quarter of 1998 were \$40.4 million, a 6% increase over the corresponding figure for 1997 (\$37.9 million). This represented a \$13,000 increase in average takings per establishment during this period. Of all types of accommodation and star gradings, only four and five star establishments showed a decrease in average takings between the June quarters of 1997 and 1998.

Average takings per room night occupied (\$84), and per room night available (\$45), for the June quarter of 1998 were both slightly higher than for the corresponding quarter of 1997 (from \$82 and \$43 respectively).

Room nights occupied

After a brief period of decline between 1990 and 1991, in trend terms quarterly room nights occupied for South Australia have consistently increased throughout the 1990s. However, in the June quarter of 1998 this number dropped slightly to 506,800 from a high of 507,100 in the March quarter. This was the first quarterly decrease in room nights occupied since the March quarter of 1994.

QUARTERLY ROOM NIGHTS OCCUPIED—SA: TREND

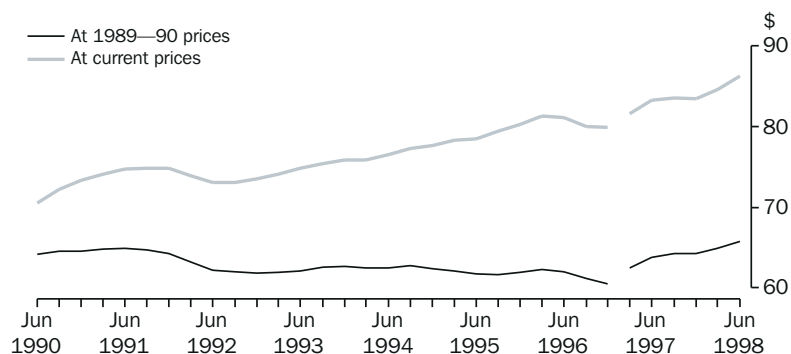


Note: There is a break in series between December quarter 1996 and March quarter 1997 because of scope changes to STA. Refer to Explanatory Notes, paragraphs 3 to 7.

Takings per room night occupied

In terms of current prices, apart from brief periods of decline between 1991 and 1992 and again during 1996, average takings per room night occupied have shown consistent growth throughout the 1990s. However, in terms of 1989–90 prices, there has been little growth and some periods of decline, although from the March quarter 1997 there have been quarterly increases. For the June quarter 1998, average takings per room night occupied increased over the previous quarter in both current and 1989–90 terms to \$86 (up \$1) and \$66 (up \$1) respectively.

AVERAGE TAKINGS PER ROOM NIGHT OCCUPIED—SA: TREND



Note: There is a break in series between December quarter 1996 and March quarter 1997 because of scope changes to the STA. Refer to Explanatory Notes, paragraphs 3 to 7.

## 13

### HOTELS, MOTELS GUEST HOUSES AND SERVICED APARTMENTS—SA(a)

	Room nights occupied(b)			Takings at current prices(b)			Takings at average 1989–90 prices(c)		
	Original	Seasonally adjusted	Trend	Original	Seasonally adjusted	Trend	Original	Seasonally adjusted	Trend
	'000	'000	'000	\$m	\$m	\$m	\$m	\$m	\$m
<b>1988</b>	1 516.5	1 512.4	1 513.8	89.0	88.7	88.8	92.3	92.0	92.1
<b>1989</b>	1 622.4	1 625.6	1 627.0	104.1	104.4	104.8	100.3	100.7	101.0
<b>1990</b>	1 680.5	1 680.3	1 675.3	119.9	119.8	119.1	108.2	108.2	107.6
<b>1991</b>	1 620.5	1 619.6	1 622.1	121.1	121.0	121.1	104.9	104.8	104.9
<b>1992</b>	1 661.7	1 657.1	1 653.0	122.2	121.7	121.3	103.7	103.3	103.0
<b>1993</b>	1 687.0	1 686.9	1 687.9	126.6	126.3	126.7	105.2	105.0	105.2
<b>1994</b>	1 754.5	1 754.4	1 756.3	135.3	135.1	135.1	110.1	109.9	109.9
<b>1995</b>	1 838.0	1 843.0	1 847.9	145.1	145.4	146.1	113.4	113.6	114.2
<b>1996</b>	1 910.2	1 911.0	1 906.3	152.5	153.3	153.6	116.7	117.2	117.2
<b>1997</b>	1 970.4	1 969.0	1 968.6	163.1	163.6	163.4	125.1	125.5	125.4
<b>1997</b>									
Mar qtr	498.2	487.5	483.2	40.5	40.4	39.4	30.8	30.8	30.2
Jun qtr	460.6	480.3	487.8	37.9	40.5	40.6	29.0	31.0	31.1
Sep qtr	477.8	495.2	494.6	39.3	41.8	41.4	30.3	32.2	31.8
Dec qtr	533.8	506.0	503.0	45.4	40.9	42.0	35.0	31.5	32.3
<b>1998</b>									
Mar qtr	517.4	510.3	507.1	44.0	44.0	42.9	33.8	33.7	32.9
Jun qtr	479.7	502.0	506.8	40.4	43.4	43.7	30.8	33.1	33.3

(a) There is a break in series between December quarter 1996 and March quarter 1997 because of scope changes in the STA. Refer to Explanatory Notes, paragraphs 3 to 7.

(b) For presentation purposes, the quarterly seasonally adjusted and trend estimates for room nights occupied and takings at current prices have been derived by summing the relevant monthly figures. However the graphs show the data plotted on a quarterly basis for the years 1990 to 1998.

(c) The deflator used to revalue current price data in this table is the Adelaide All Groups Consumer Price Index. See paragraphs 8 to 10 of the Explanatory Notes.

	Licensed hotels with facilities	Motels and guest houses	Serviced apartments	Star grading				Total
				1 and ungraded	2	3	4 and 5	
ESTABLISHMENTS AND CAPACITY								
	no.	no.	no.	no.	no.	no.	no.	no.
<b>Jun qtr 1997</b>								
Establishments	61	152	17	16	64	123	27	230
Guest rooms	3 819	5 197	624	435	1 848	4 482	2 875	9 640
Rooms per establishment	63	34	37	27	29	36	107	42
<b>Jun qtr 1998</b>								
Establishments	61	147	19	12	62	124	29	227
Guest rooms	4 048	5 136	750	432	1 838	4 543	3 121	9 934
Rooms per establishment	66	35	40	36	30	37	108	44
AVERAGE NIGHTLY ROOMS OCCUPIED PER ESTABLISHMENT								
	no.	no.	no.	no.	no.	no.	no.	no.
<b>1997</b>								
Jun qtr	33.9	17.2	22.5	9.6	11.7	18.8	68.5	22.0
<b>1998</b>								
Apr	37.8	20.4	27.6	16.7	13.9	21.6	72.6	25.7
May	35.7	18.0	22.7	15.2	12.8	19.0	66.6	23.2
Jun	33.3	16.9	20.3	14.3	12.3	17.4	62.4	21.6
Jun qtr	35.6	18.4	23.5	15.4	13.0	19.3	67.1	23.5
AVERAGE NIGHTLY GUESTS PER OCCUPIED ROOM								
	no.	no.	no.	no.	no.	no.	no.	no.
<b>1997</b>								
Jun qtr	1.5	1.6	n.a.	n.a.	n.a.	n.a.	n.a.	n.a.
<b>1998</b>								
Apr	1.5	1.8	2.2	1.8	1.8	1.8	1.5	1.7
May	1.4	1.6	2.0	1.8	1.6	1.6	1.4	1.6
Jun	1.4	1.6	2.0	1.7	1.6	1.7	1.4	1.6
Jun qtr	1.4	1.7	2.1	1.7	1.7	1.7	1.4	1.6
AVERAGE LENGTH OF STAY								
	days	days	days	days	days	days	days	days
<b>1997</b>								
Jun qtr	2.0	1.7	n.a.	n.a.	n.a.	n.a.	n.a.	n.a.
<b>1998</b>								
Apr	2.1	1.8	3.4	2.1	1.8	1.9	2.3	2.0
May	2.0	1.7	3.3	2.2	1.8	1.8	2.2	1.9
Jun	1.9	1.7	3.1	2.1	1.7	1.7	2.1	1.8
Jun qtr	2.0	1.7	3.3	2.1	1.8	1.8	2.2	1.9



	Licensed hotels with facilities	Motels and guest houses	Serviced apartments	Star grading				Total
				1 and ungraded	2	3	4 and 5	
TAKINGS FROM ACCOMMODATION								
	\$'000	\$'000	\$'000	\$'000	\$'000	\$'000	\$'000	\$'000
<b>1997</b>								
Jun qtr	18 460	16 835	2 624	743	3 199	14 347	19 629	37 919
<b>1998</b>								
Apr	6 461	6 556	1 303	426	1 300	5 677	6 917	14 320
May	6 693	5 858	1 177	468	1 131	5 096	7 033	13 728
Jun	5 894	5 359	1 071	480	1 063	4 504	6 278	12 324
Jun qtr	19 048	17 773	3 551	1 374	3 494	15 277	20 228	40 372
AVERAGE TAKINGS PER ESTABLISHMENT								
	\$'000	\$'000	\$'000	\$'000	\$'000	\$'000	\$'000	\$'000
<b>1997</b>								
Jun qtr	302.6	110.8	154.3	46.5	50.0	116.6	727.0	164.9
<b>1998</b>								
Apr	105.9	44.6	68.6	35.5	21.0	45.8	238.5	63.1
May	109.7	39.9	61.9	39.0	18.2	41.1	242.5	60.5
Jun	96.6	36.5	56.4	40.0	17.1	36.3	216.5	54.3
Jun qtr	312.3	120.9	186.9	114.5	56.3	123.2	697.5	177.9
AVERAGE TAKINGS PER ROOM NIGHT OCCUPIED								
	\$	\$	\$	\$	\$	\$	\$	\$
<b>1997</b>								
Jun qtr	98	71	75	53	47	68	117	82
<b>1998</b>								
Apr	98	73	86	75	50	71	116	84
May	100	72	91	88	46	70	119	85
Jun	97	72	93	93	47	70	116	84
Jun qtr	98	72	89	85	48	70	117	84
AVERAGE TAKINGS PER ROOM NIGHT AVAILABLE								
	\$	\$	\$	\$	\$	\$	\$	\$
<b>1997</b>								
Jun qtr	53	36	46	19	19	35	75	43
<b>1998</b>								
Apr	56	43	60	35	24	42	78	49
May	54	37	52	37	20	36	74	45
Jun	49	35	48	37	19	33	67	42
Jun qtr	53	38	53	36	21	37	73	45
AVERAGE TAKINGS PER GUEST NIGHT								
	\$	\$	\$	\$	\$	\$	\$	\$
<b>1997</b>								
Jun qtr	67	43	n.a.	n.a.	n.a.	n.a.	n.a.	n.a.
<b>1998</b>								
Apr	64	41	38	43	28	39	75	49
May	71	45	45	49	28	43	85	54
Jun	69	45	46	55	29	42	84	54
Jun qtr	68	44	43	49	29	41	81	52

There were 293 accommodation establishments in Western Australia at the end of June 1998. Between June 1997 and June 1998 the number of guest rooms available increased by 3% to 16,643 rooms, and the number of rooms per establishment increased from 56 to 57.

In the June quarter 1998, a nightly average of 30.9 guest rooms were occupied in these establishments. Licensed hotels with facilities had the highest average nightly number of rooms occupied (38.1 rooms), followed by motels and guest houses, and serviced apartments (25.1 and 25.0 rooms respectively). On average there were 1.5 guests per occupied room in licensed hotels with facilities, 1.7 guests in motels and guest houses, and 2.1 guests in serviced apartments. The average length of stay for all accommodation was 2.4 nights, with the longest average stay occurring in serviced apartments (3.2 nights).

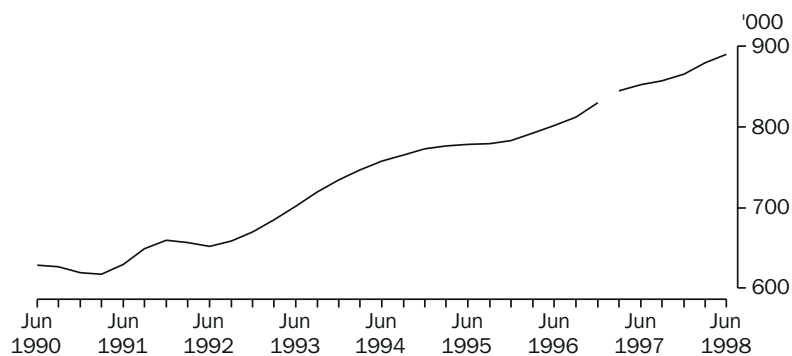
Total takings, for the June quarter 1998, were \$77.8 million, an increase of 4%, or \$2.8 million, over the corresponding quarter of 1997. This represented a \$5,000 increase in average takings per establishment. One star accommodation had the largest percentage increase in average takings during this period (up 56% to \$24,100 per establishment).

For Western Australia, in the June quarter 1998, average takings per room night occupied and per room night available were \$94 and \$51 respectively. Both of these figures were unchanged from the June quarter of the previous year. Average takings per room night occupied and per room night available were highest in five star establishments (\$144 and \$97 respectively), and lowest in one star establishments (\$40 and \$10 respectively). Similarly, average takings per guest, were highest in five star establishments (\$95) and lowest in one star establishments (\$30).

Room nights occupied

In the June quarter 1998 the quarterly number of room nights occupied in trend terms was 889,600, a 1% increase over the previous quarter and a 4% increase over the corresponding quarter in 1997. This increase continued a trend that has seen growth in the number of room nights occupied in every quarter since the September quarter of 1992.

QUARTERLY ROOM NIGHTS OCCUPIED—WA: TREND

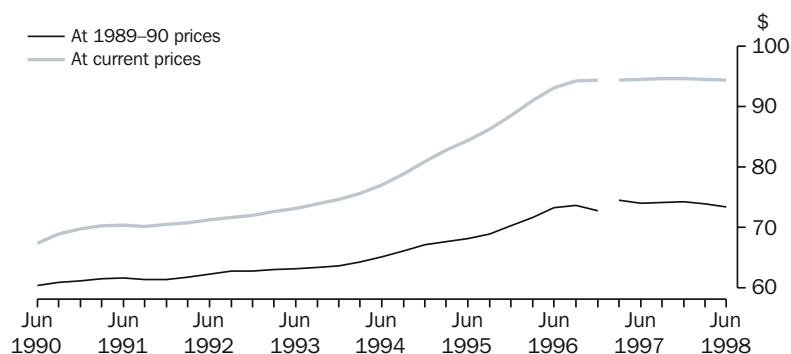


Note: There is a break in series between December quarter 1996 and March quarter 1997 because of scope changes to STA. Refer to Explanatory Notes, paragraphs 3 to 7.

Takings per room night occupied

Between 1994 and 1996 Western Australia's accommodation establishments underwent a period of solid growth. Since then growth in terms of both current prices and 1989-90 prices has levelled off, and over the last two quarters average takings per room night occupied have decreased to \$94 in current terms, and \$73 in 1989-90 terms for the June quarter 1998.

AVERAGE TAKINGS PER ROOM NIGHT OCCUPIED—WA: TREND



Note: There is a break in series between December quarter 1996 and March quarter 1997 because of scope changes to the STA. Refer to Explanatory Notes, paragraphs 3 to 7.

## 16

### HOTELS, MOTELS GUEST HOUSES AND SERVICED APARTMENTS—WA(a)

	Room nights occupied(b)			Takings at current prices(b)			Takings at average 1989-90 prices(c)		
	Original	Seasonally adjusted	Trend	Original	Seasonally adjusted	Trend	Original	Seasonally adjusted	Trend
	'000	'000	'000	\$m	\$m	\$m	\$m	\$m	\$m
<b>1988</b>	2 412.1	2 407.8	2 414.6	137.8	137.6	137.9	142.8	142.6	142.9
<b>1989</b>	2 525.7	2 531.0	2 530.8	159.4	159.5	159.8	153.6	153.9	154.0
<b>1990</b>	2 503.6	2 503.7	2 498.4	170.5	170.4	169.7	152.1	152.1	151.6
<b>1991</b>	2 566.6	2 562.7	2 555.7	180.2	179.9	179.8	157.6	157.4	157.2
<b>1992</b>	2 645.7	2 634.7	2 636.6	189.6	188.8	188.6	165.5	164.8	164.6
<b>1993</b>	2 835.3	2 836.3	2 841.4	209.0	209.0	209.4	179.7	179.7	180.1
<b>1994</b>	3 041.7	3 041.4	3 043.0	237.9	237.6	237.8	200.2	200.0	200.0
<b>1995</b>	3 119.8	3 123.3	3 117.9	266.8	267.0	266.8	214.3	214.4	214.4
<b>1996</b>	3 223.4	3 220.7	3 235.9	301.2	300.8	301.8	235.9	235.5	235.7
<b>1997</b>	3 424.9	3 424.4	3 420.0	323.8	323.8	323.6	253.8	253.8	254.1
<b>1997</b>									
Mar qtr	846.0	862.4	845.1	80.0	81.2	79.8	62.5	63.5	63.1
Jun qtr	797.4	852.4	852.1	75.0	80.3	80.6	58.7	62.8	63.1
Sep qtr	881.4	848.1	856.9	83.7	81.0	81.2	65.8	63.7	63.6
Dec qtr	900.1	861.5	865.9	85.1	81.3	82.0	66.8	63.8	64.3
<b>1998</b>									
Mar qtr	872.3	893.3	879.5	82.8	84.4	83.1	64.8	66.0	65.0
Jun qtr	824.3	880.9	889.6	77.8	83.2	83.9	60.4	64.6	65.3

(a) There is a break in series between December quarter 1996 and March quarter 1997 because of scope changes in the STA. Refer to Explanatory Notes, paragraphs 3 to 7.

(b) For presentation purposes, the quarterly seasonally adjusted and trend estimates for room nights occupied and takings at current prices have been derived by summing the relevant monthly figures. However the graphs show the data plotted on a quarterly basis for the years 1990 to 1998.

(c) The deflator used to revalue current price data in this table is the Perth All Groups Consumer Price Index. See paragraphs 8 to 10 of the Explanatory Notes.

	Licensed hotels with facilities	Motels and guest houses	Serviced apartments	Star grading						Ungraded	Total
				1	2	3	4	5			
ESTABLISHMENTS AND CAPACITY											
	no.	no.	no.	no.	no.	no.	no.	no.	no.	no.	
<b>Jun qtr 1997</b>											
Establishments	129	111	48	6	77	143	19	7	36	288	
Guest rooms	8 715	5 424	2 054	160	2 419	7 756	n.p.	n.p.	1 552	16 193	
Rooms per establishment	68	49	43	27	31	54	n.p.	n.p.	43	56	
<b>Jun qtr 1998</b>											
Establishments	132	111	50	4	67	136	24	9	53	293	
Guest rooms	8 965	5 480	2 198	107	2 040	7 430	2 381	2 008	2 677	16 643	
Rooms per establishment	68	49	44	27	30	55	99	223	51	57	
AVERAGE NIGHTLY ROOMS OCCUPIED PER ESTABLISHMENT											
	no.	no.	no.	no.	no.	no.	no.	no.	no.	no.	
<b>1997</b>											
Jun qtr	37.3	25.9	22.7	4.8	15.7	28.7	n.p.	n.p.	20.6	30.4	
<b>1998</b>											
Apr	37.4	27.2	28.1	6.1	14.5	30.5	60.2	152.8	26.4	32.0	
May	41.3	24.9	24.4	6.2	13.9	29.2	62.1	173.3	27.5	32.2	
Jun	35.4	23.3	22.7	7.5	13.3	27.0	53.8	123.6	26.2	28.6	
Jun qtr	38.1	25.1	25.0	6.6	13.9	28.9	58.8	150.2	26.7	30.9	
AVERAGE NIGHTLY GUESTS PER OCCUPIED ROOM											
	no.	no.	no.	no.	no.	no.	no.	no.	no.	no.	
<b>1997</b>											
Jun qtr	1.5	1.6	n.a.	n.a.	n.a.	n.a.	n.a.	n.a.	n.a.	n.a.	
<b>1998</b>											
Apr	1.6	1.8	2.3	1.2	1.7	1.8	2.0	1.6	1.5	1.7	
May	1.4	1.7	2.0	1.5	1.6	1.6	1.7	1.4	1.4	1.6	
Jun	1.5	1.7	2.1	1.3	1.6	1.6	1.8	1.5	1.4	1.6	
Jun qtr	1.5	1.7	2.1	1.3	1.6	1.7	1.9	1.5	1.5	1.6	
AVERAGE LENGTH OF STAY											
	days	days	days	days	days	days	days	days	days	days	
<b>1997</b>											
Jun qtr	2.3	2.2	n.a.	n.a.	n.a.	n.a.	n.a.	n.a.	n.a.	n.a.	
<b>1998</b>											
Apr	2.4	2.1	3.3	3.3	2.1	2.3	3.2	2.6	2.3	2.4	
May	2.4	2.3	3.1	2.0	2.2	2.4	2.9	2.8	2.3	2.5	
Jun	2.3	2.3	3.1	2.1	2.1	2.4	3.0	2.4	2.1	2.4	
Jun qtr	2.4	2.2	3.2	2.3	2.1	2.3	3.1	2.6	2.2	2.4	

	Licensed hotels with facilities	Motels and guest houses	Serviced apartments	Star grading						Ungraded	Total
				1	2	3	4	5			
TAKINGS FROM ACCOMMODATION											
	\$'000	\$'000	\$'000	\$'000	\$'000	\$'000	\$'000	\$'000	\$'000	\$'000	
<b>1997</b>											
Jun qtr	46 230	19 788	8 997	93	5 921	28 812	n.p.	n.p.	6 944	75 016	
<b>1998</b>											
Apr	15 023	7 162	4 231	32	1 730	9 663	5 263	5 782	3 945	26 415	
May	18 108	6 687	3 552	30	1 664	9 334	5 541	7 374	4 405	28 348	
Jun	13 734	6 185	3 111	35	1 546	8 413	4 611	4 517	3 908	23 029	
Jun qtr	46 865	20 034	10 894	97	4 939	27 410	15 415	17 673	12 258	77 793	
AVERAGE TAKINGS PER ESTABLISHMENT											
	\$'000	\$'000	\$'000	\$'000	\$'000	\$'000	\$'000	\$'000	\$'000	\$'000	
<b>1997</b>											
Jun qtr	358.4	178.3	187.4	15.4	76.9	201.5	n.p.	n.p.	192.9	260.5	
<b>1998</b>											
Apr	113.8	64.5	84.6	8.0	25.8	71.1	219.3	642.5	74.4	90.2	
May	137.2	60.2	71.0	7.6	24.8	68.6	230.9	819.3	83.1	96.8	
Jun	104.0	55.7	62.2	8.6	23.1	61.9	192.1	501.9	73.7	78.6	
Jun qtr	355.0	180.5	217.9	24.1	73.7	201.5	642.3	1 963.7	231.3	265.5	
AVERAGE TAKINGS PER ROOM NIGHT OCCUPIED											
	\$	\$	\$	\$	\$	\$	\$	\$	\$	\$	
<b>1997</b>											
Jun qtr	106	76	91	35	54	77	n.p.	n.p.	103	94	
<b>1998</b>											
Apr	102	79	100	44	59	78	121	140	94	94	
May	107	78	94	39	58	76	120	153	97	97	
Jun	98	80	92	38	58	77	119	135	94	92	
Jun qtr	103	79	96	40	58	77	120	144	95	94	
AVERAGE TAKINGS PER ROOM NIGHT AVAILABLE											
	\$	\$	\$	\$	\$	\$	\$	\$	\$	\$	
<b>1997</b>											
Jun qtr	58	40	48	6	27	41	n.p.	n.p.	49	51	
<b>1998</b>											
Apr	56	44	64	10	28	43	74	96	49	53	
May	65	39	52	9	26	41	75	119	53	55	
Jun	51	38	47	11	25	38	65	75	49	46	
Jun qtr	58	40	55	10	27	41	71	97	50	51	
AVERAGE TAKINGS PER GUEST NIGHT											
	\$	\$	\$	\$	\$	\$	\$	\$	\$	\$	
<b>1997</b>											
Jun qtr	73	47	n.a.	n.a.	n.a.	n.a.	n.a.	n.a.	n.a.	n.a.	
<b>1998</b>											
Apr	65	44	44	35	35	44	60	87	62	54	
May	75	46	46	27	37	46	69	106	68	61	
Jun	67	48	44	29	37	47	65	91	66	57	
Jun qtr	70	46	45	30	36	46	64	95	65	57	

TASMANIA

There were 131 accommodation establishments in Tasmania at the end of June 1998, six more than at the same time in 1997. The number of guest rooms available increased by 5% to 5,556, to an average of 42 rooms per establishment.

The average nightly number of rooms occupied per establishment changed very little between the June quarters of 1997 and 1998 to be 19 in the June quarter 1998. The only large change occurred for serviced apartments, where the average nightly number of rooms occupied increased by 19% to 17.8. During this period, the average number of nightly guests per occupied room remained at 1.8. The average length of stay for the June quarter 1998 was 1.9 nights.

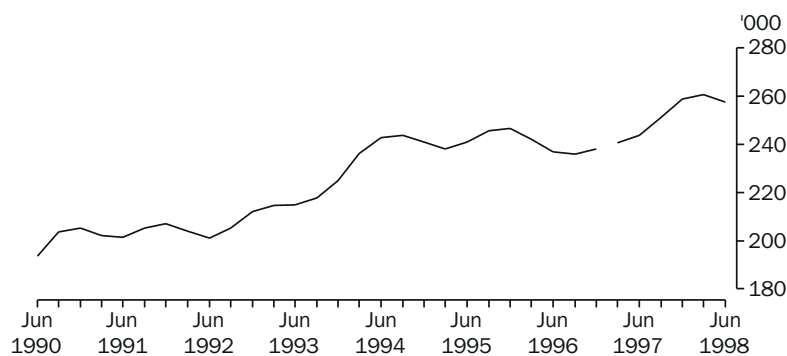
Takings from all accommodation establishments for the June quarter 1998 were \$19.0 million, up 9% on takings for the June quarter 1997. Quarterly takings increased across all types of accommodation. Reflecting this growth was a 4% increase in the average takings for all establishments to \$145,200. At 18%, serviced apartments showed the largest percentage increase in average takings, rising by \$24,000 per establishment.

Average takings per room night occupied and per room night available both showed small increases between the June quarters 1997 and 1998, rising to \$84 (up \$3) and \$38 (up \$2). Of all types of accommodation, motels and guest houses showed the largest percentage increase in average takings per room night occupied (up 8% to \$76), and per room night available (up 6% to \$34).

Room nights occupied

The trend estimate for the quarterly number of room nights occupied for Tasmania in the June quarter 1998 was 257,400, a decrease of 1% since the March quarter. The decline in the June quarter followed six successive quarters of growth dating back to the December quarter 1996.

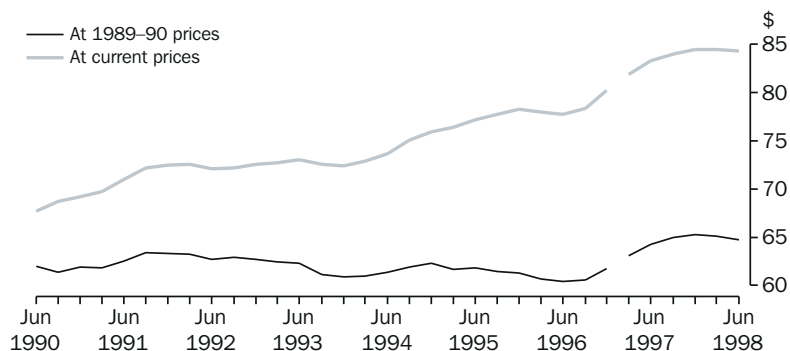
QUARTERLY ROOM NIGHTS OCCUPIED—TAS: TREND



Note: There is a break in series between December quarter 1996 and March quarter 1997 because of scope changes to STA. Refer to Explanatory Notes, paragraphs 3 to 7.

Takings per room night occupied Since 1996, growth in average takings per room night occupied for Tasmania has slowed considerably in both current and 1989–90 terms. This continued in the June quarter of 1998, with average takings per room night occupied falling slightly (less than \$1) below the average for the March quarter, in both current (\$84) and 1989–90 terms (\$65).

AVERAGE TAKINGS PER ROOM NIGHT OCCUPIED—TAS: TREND



Note: There is a break in series between December quarter 1996 and March quarter 1997 because of scope changes to the STA. Refer to Explanatory Notes, paragraphs 3 to 7.

# 19

## HOTELS, MOTELS GUEST HOUSES AND SERVICED APARTMENTS—TAS.(a)

	Room nights occupied(b)			Takings at current prices(b)			Takings at average 1989–90 prices(c)		
	Original	Seasonally adjusted	Trend	Original	Seasonally adjusted	Trend	Original	Seasonally adjusted	Trend
	'000	'000	'000	\$m	\$m	\$m	\$m	\$m	\$m
<b>1988</b>	696.8	697.4	697.3	41.6	41.6	41.6	43.1	43.0	42.9
<b>1989</b>	700.5	701.9	708.4	44.8	44.9	45.4	43.5	43.5	46.5
<b>1990</b>	786.3	791.2	780.8	53.3	53.8	52.9	48.5	48.9	48.7
<b>1991</b>	817.4	816.9	815.7	58.2	58.3	58.2	51.3	51.3	51.2
<b>1992</b>	815.4	815.2	822.3	59.1	59.0	59.5	51.4	51.3	51.8
<b>1993</b>	878.6	876.2	872.1	63.9	63.7	63.4	54.2	54.0	53.8
<b>1994</b>	954.9	960.6	963.6	70.9	71.5	71.7	58.7	59.2	59.4
<b>1995</b>	970.1	974.5	971.6	75.0	75.4	75.2	59.7	60.0	59.8
<b>1996</b>	954.4	951.3	953.1	75.2	74.8	74.9	58.4	57.9	58.0
<b>1997</b>	990.3	992.9	994.3	82.6	82.9	83.0	63.7	64.0	64.1
<b>1997</b>									
Mar qtr	304.0	244.0	240.5	25.5	20.1	19.7	19.6	15.4	15.2
Jun qtr	214.6	236.9	243.6	17.5	19.4	20.3	13.5	15.0	15.7
Sep qtr	198.2	253.3	251.4	16.3	21.5	21.1	12.6	16.7	16.3
Dec qtr	273.5	258.7	258.8	23.3	21.9	21.9	18.0	16.9	16.9
<b>1998</b>									
Mar qtr	334.3	268.5	260.7	28.7	22.6	22.0	22.1	17.4	17.0
Jun qtr	226.0	249.0	257.4	19.0	21.0	21.7	14.6	16.1	16.6

(a) There is a break in series between December quarter 1996 and March quarter 1997 because of scope changes in the STA. Refer to Explanatory Notes, paragraphs 3 to 7.

(b) For presentation purposes, the quarterly seasonally adjusted and trend estimates for room nights occupied and takings at current prices have been derived by summing the relevant monthly figures. However the graphs show the data plotted on a quarterly basis for the years 1990 to 1998.

(c) The deflator used to revalue current price data in this table is the Hobart All Groups Consumer Price Index. See paragraphs 8 to 10 of the Explanatory Notes.

	Licensed hotels with facilities	Motels and guest houses	Serviced apart- ments	Star grading			Total
				1, 2 and ungraded	3	4 and 5	
ESTABLISHMENTS AND CAPACITY							
	no.	no.	no.	no.	no.	no.	no.
<b>Jun qtr 1997</b>							
Establishments	55	49	21	41	61	23	125
Guest rooms	2 946	1 652	679	1 171	2 429	1 677	5 277
Rooms per establishment	54	34	32	29	40	73	42
<b>Jun qtr 1998</b>							
Establishments	55	52	24	40	65	26	131
Guest rooms	2 917	1 739	900	1 189	2 413	1 954	5 556
Rooms per establishment	53	33	38	30	37	75	42
AVERAGE NIGHTLY ROOMS OCCUPIED PER ESTABLISHMENT							
	no.	no.	no.	no.	no.	no.	no.
<b>1997</b>							
Jun qtr	23.6	15.2	14.9	11.3	16.1	39.7	18.9
<b>1998</b>							
Apr	28.4	19.6	22.0	13.0	20.1	49.4	23.7
May	22.7	14.1	17.6	10.3	14.7	39.8	18.3
Jun	19.0	10.8	14.0	8.1	11.4	33.8	14.8
Jun qtr	23.4	14.8	17.8	10.4	15.4	41.0	19.0
AVERAGE NIGHTLY GUESTS PER OCCUPIED ROOM							
	no.	no.	no.	no.	no.	no.	no.
<b>1997</b>							
Jun qtr	1.6	1.8	n.a.	n.a.	n.a.	n.a.	n.a.
<b>1998</b>							
Apr	1.7	1.9	2.2	1.8	2.0	1.7	1.8
May	1.6	1.8	1.9	1.6	1.9	1.6	1.7
Jun	1.6	1.8	2.1	1.7	1.9	1.6	1.7
Jun qtr	1.6	1.8	2.1	1.7	1.9	1.6	1.8
AVERAGE LENGTH OF STAY							
	days	days	days	days	days	days	days
<b>1997</b>							
Jun qtr	1.8	1.8	n.a.	n.a.	n.a.	n.a.	n.a.
<b>1998</b>							
Apr	1.9	1.8	2.1	1.7	1.7	2.2	1.9
May	2.0	1.8	2.1	1.9	1.8	2.1	1.9
Jun	1.9	1.7	2.0	1.9	1.8	2.0	1.9
Jun qtr	1.9	1.8	2.1	1.8	1.8	2.1	1.9



	Licensed hotels with facilities	Motels and guest houses	Serviced apart- ments	Star grading			Total
				1, 2 and ungraded	3	4 and 5	
TAKINGS FROM ACCOMMODATION							
	\$'000	\$'000	\$'000	\$'000	\$'000	\$'000	\$'000
<b>1997</b>							
Jun qtr	9 947	4 759	2 753	3 255	6 113	8 091	17 459
<b>1998</b>							
Apr	4 055	2 361	1 610	1 190	2 842	3 996	8 027
May	3 305	1 672	1 187	911	2 005	3 249	6 165
Jun	2 638	1 263	924	682	1 492	2 652	4 825
Jun qtr	9 999	5 296	3 722	2 782	6 338	9 897	19 018
AVERAGE TAKINGS PER ESTABLISHMENT							
	\$'000	\$'000	\$'000	\$'000	\$'000	\$'000	\$'000
<b>1997</b>							
Jun qtr	180.9	97.1	131.1	79.4	100.2	351.8	139.7
<b>1998</b>							
Apr	73.7	45.4	67.1	29.7	43.7	153.7	61.3
May	60.1	32.2	49.5	22.8	30.8	125.0	47.1
Jun	48.0	24.3	38.5	17.0	23.0	102.0	36.8
Jun qtr	181.8	101.9	155.1	69.6	97.5	380.7	145.2
AVERAGE TAKINGS PER ROOM NIGHT OCCUPIED							
	\$	\$	\$	\$	\$	\$	\$
<b>1997</b>							
Jun qtr	84	70	97	77	68	97	81
<b>1998</b>							
Apr	86	77	102	76	73	104	86
May	86	74	91	71	68	101	83
Jun	84	75	92	70	67	101	83
Jun qtr	86	76	96	73	70	102	84
AVERAGE TAKINGS PER ROOM NIGHT AVAILABLE							
	\$	\$	\$	\$	\$	\$	\$
<b>1997</b>							
Jun qtr	37	32	45	31	28	53	36
<b>1998</b>							
Apr	46	45	60	33	39	68	48
May	37	31	43	25	27	54	36
Jun	30	24	34	19	21	45	29
Jun qtr	38	34	45	26	29	56	38
AVERAGE TAKINGS PER GUEST NIGHT							
	\$	\$	\$	\$	\$	\$	\$
<b>1997</b>							
Jun qtr	53	39	n.a.	n.a.	n.a.	n.a.	n.a.
<b>1998</b>							
Apr	52	41	46	42	37	61	47
May	53	42	47	44	36	64	49
Jun	53	43	45	42	35	65	48
Jun qtr	53	42	46	43	36	63	48

NORTHERN TERRITORY

At the end of June 1998 there were 88 accommodation establishments in the Northern Territory, two fewer than at the same time in 1997. Also during this period the number of guest rooms available decreased by 2% to 6,019. The average number of rooms per establishment remained at 68.

The average nightly number of rooms occupied per establishment increased between the June quarters 1997 and 1998, by 2% to 37.1 rooms. Of all accommodation types, the largest percentage increase occurred in licensed hotels with facilities, where the average nightly number of rooms occupied increased by 5% to 43.7 rooms.

On average there were, in the June quarter 1998, 1.7 nightly guests per occupied room. The average length of stay was 1.9 nights, with guests staying longest in serviced apartments (2.9 nights).

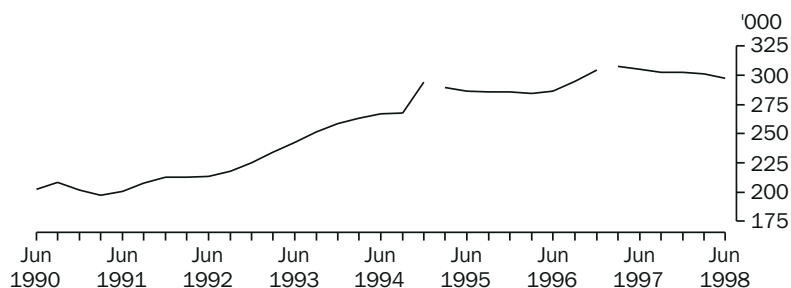
Takings from accommodation, for the June quarter of 1998, totalled \$29.3 million, down \$145,000 on the total for the June quarter of the previous year. During this period average takings per establishment increased by 2%, or \$5,800 per establishment, and this increase was reflected across all types of accommodation.

Between the June quarters 1997 and 1998 average takings per room night occupied remained at \$99, while average takings per room night available increased slightly, by \$1 to \$54 per room night. Serviced apartments showed the largest increases in takings both per room night occupied (up 6% to \$99), and per room night available (up 11% to \$61).

Room nights occupied

Throughout the early 1990s the quarterly number of room nights occupied for the Northern Territory increased steadily, and despite some breaks in the series this has flattened since 1995. For the June quarter 1998, the quarterly number of room nights occupied in trend terms was 297,600, a 1% decrease since the previous quarter, and a 2% decrease since the corresponding quarter of 1997.

QUARTERLY ROOM NIGHTS OCCUPIED—NT: TREND

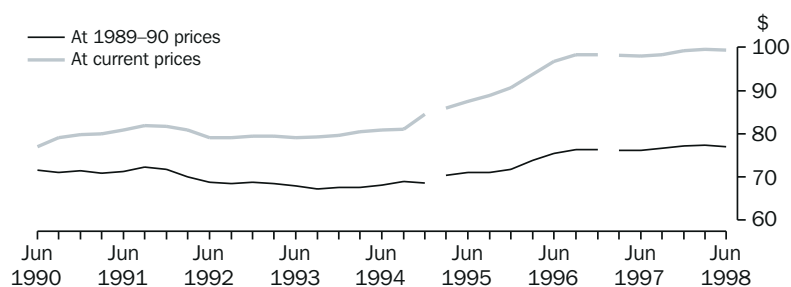


Note: There is a break in series relating to the Northern Territory, because two establishments previously classified as holiday units were reclassified as motels from the December quarter 1994.  
There is a break in series between December quarter 1996 and March quarter 1997 because of scope changes to STA. Refer to Explanatory notes, paragraphs 3 to 7.

Takings per room night occupied

In the June quarter 1998, average takings per room night occupied in current terms were \$99, and in 1989–90 price terms were \$77. This represented a decrease of less than 1% in average takings per room night occupied, in both current and 1989–90 terms, since the previous quarter. Prior to the June quarter of 1998, average takings per room night occupied had increased steadily at both current prices and 1989–90 price terms since 1995.

AVERAGE TAKINGS PER ROOM NIGHT OCCUPIED—NT: TREND



Notes: There is a break in series relating to the Northern Territory, because two establishments previously classified as holiday units were reclassified as motels from the December quarter 1994.  
There is a break in series between December quarter 1996 and March quarter 1997 because of scope changes to the STA. Refer to Explanatory notes, paragraphs 3 to 7.

## 22

### HOTELS, MOTELS GUEST HOUSES AND SERVICED APARTMENTS—NT(a)

	Room nights occupied(b)			Takings at current prices(b)			Takings at average 1989–90 prices(c)		
	Original	Seasonally adjusted	Trend	Original	Seasonally adjusted	Trend	Original	Seasonally adjusted	Trend
	'000	'000	'000	\$m	\$m	\$m	\$m	\$m	\$m
<b>1988</b>	761.4	760.2	759.9	53.3	53.0	53.0	54.6	54.4	54.3
<b>1989</b>	739.0	736.4	744.7	53.3	52.9	53.8	51.9	51.6	54.2
<b>1990</b>	820.0	811.9	799.3	64.2	63.4	62.1	58.6	57.9	57.5
<b>1991</b>	817.6	814.4	818.7	66.6	66.2	66.5	58.7	58.3	58.6
<b>1992</b>	872.7	871.9	869.1	69.0	69.1	69.2	59.9	60.0	60.0
<b>1993</b>	989.8	984.7	986.3	78.6	78.3	78.3	67.0	66.8	66.9
<b>1994</b>	1 096.3	1 094.0	1 092.6	89.7	89.4	89.4	75.0	74.8	74.7
<b>1995</b>	1 146.4	1 144.8	1 148.2	101.3	100.9	101.4	81.3	81.2	81.7
<b>1996</b>	1 173.1	1 170.0	1 170.0	113.9	113.4	113.3	88.7	88.4	88.3
<b>1997</b>	1 217.7	1 219.1	1 218.5	119.7	120.1	119.8	93.3	93.4	93.2
<b>1997</b>									
Mar qtr	242.9	314.6	307.9	22.6	31.4	30.2	17.6	24.3	23.4
Jun qtr	299.2	297.5	305.2	29.5	28.9	29.9	22.9	22.4	23.2
Sep qtr	383.0	302.5	302.6	38.9	29.5	29.7	30.4	23.0	23.2
Dec qtr	292.6	304.5	302.8	28.7	30.3	30.0	22.4	23.7	23.4
<b>1998</b>									
Mar qtr	235.6	304.2	301.5	22.3	30.7	30.0	17.3	23.8	23.4
Jun qtr	295.1	293.7	297.6	29.3	28.8	29.6	22.7	22.3	22.9

(a) There is a break in series between December quarter 1996 and March quarter 1997 because of scope changes in the STA. Refer to Explanatory Notes, paragraphs 3 to 7.

(b) For presentation purposes, the quarterly seasonally adjusted and trend estimates for room nights occupied and takings at current prices have been derived by summing the relevant monthly figures. However the graphs show the data plotted on a quarterly basis for the years 1990 to 1998.

(c) The deflator used to revalue current price data in this table is the Darwin All Groups Consumer Price Index. See paragraphs 8 to 10 of the Explanatory Notes.

	Licensed hotels with facilities	Motels and guest houses	Serviced apartments	Star grading					Total
				1 and ungraded	2	3	4	5	
ESTABLISHMENTS AND CAPACITY									
	no.	no.	no.	no.	no.	no.	no.	no.	no.
<b>Jun qtr 1997</b>									
Establishments	25	49	16	25	27	31	7	—	90
Guest rooms	1 989	3 110	1 051	1 189	n.p.	2 569	n.p.	—	6 150
Rooms per establishment	80	64	66	48	n.p.	83	n.p.	—	68
<b>Jun qtr 1998</b>									
Establishments	23	48	17	24	24	31	9	—	88
Guest rooms	1 937	3 015	1 067	1 309	1 127	2 440	1 143	—	6 019
Rooms per establishment	84	63	63	55	47	79	127	—	68
AVERAGE NIGHTLY ROOMS OCCUPIED PER ESTABLISHMENT									
	no.	no.	no.	no.	no.	no.	no.	no.	no.
<b>1997</b>									
Jun qtr	41.5	33.3	38.8	21.6	n.p.	52.0	n.p.	—	36.5
<b>1998</b>									
Apr	43.9	31.3	36.9	27.1	19.4	45.3	68.2	—	35.6
May	43.1	32.7	36.7	29.1	19.5	44.7	70.6	—	36.2
Jun	44.3	36.3	42.0	31.6	23.6	50.0	66.7	—	39.5
Jun qtr	43.7	33.4	38.6	29.3	20.8	46.7	68.5	—	37.1
AVERAGE NIGHTLY GUESTS PER OCCUPIED ROOM									
	no.	no.	no.	no.	no.	no.	no.	no.	no.
<b>1997</b>									
Jun qtr	1.6	1.6	n.a.	n.a.	n.a.	n.a.	n.a.	—	n.a.
<b>1998</b>									
Apr	1.6	1.7	1.9	1.5	1.7	1.7	1.7	—	1.7
May	1.6	1.7	1.8	1.5	1.7	1.7	1.6	—	1.7
Jun	1.6	1.7	1.9	1.6	1.8	1.8	1.7	—	1.7
Jun qtr	1.6	1.7	1.9	1.6	1.7	1.8	1.6	—	1.7
AVERAGE LENGTH OF STAY									
	days	days	days	days	days	days	days	days	days
<b>1997</b>									
Jun qtr	1.9	1.9	n.a.	n.a.	n.a.	n.a.	n.a.	—	n.a.
<b>1998</b>									
Apr	1.6	1.8	2.7	1.8	1.7	1.9	2.1	—	1.9
May	1.7	1.9	2.8	2.1	1.8	1.9	2.1	—	2.0
Jun	1.8	1.8	3.0	2.2	1.7	2.0	2.2	—	2.0
Jun qtr	1.7	1.8	2.9	2.0	1.7	1.9	2.1	—	1.9

	Licensed hotels with facilities	Motels and guest houses	Serviced apartments	Star grading					Total
				1 and ungraded	2	3	4	5	
TAKINGS FROM ACCOMMODATION									
	\$'000	\$'000	\$'000	\$'000	\$'000	\$'000	\$'000	\$'000	\$'000
<b>1997</b>									
Jun qtr	11 632	12 577	5 263	3 892	n.p.	14 843	n.p.	—	29 472
<b>1998</b>									
Apr	3 768	3 979	1 628	1 729	925	4 311	2 410	—	9 375
May	3 639	4 262	1 959	1 947	1 004	4 525	2 384	—	9 860
Jun	3 625	4 341	2 126	2 139	1 182	4 578	2 192	—	10 091
Jun qtr	11 033	12 582	5 713	5 815	3 112	13 414	6 986	—	29 327
AVERAGE TAKINGS PER ESTABLISHMENT									
	\$'000	\$'000	\$'000	\$'000	\$'000	\$'000	\$'000	\$'000	\$'000
<b>1997</b>									
Jun qtr	465.3	256.7	329.0	155.7	n.p.	478.8	n.p.	—	327.5
<b>1998</b>									
Apr	163.8	82.9	95.8	72.1	38.6	139.1	267.7	—	106.5
May	158.2	88.8	115.2	81.1	41.8	146.0	264.9	—	112.0
Jun	157.6	90.4	125.0	89.1	49.3	147.7	243.5	—	114.7
Jun qtr	479.7	262.1	336.0	242.3	129.7	432.7	776.2	—	333.3
AVERAGE TAKINGS PER ROOM NIGHT OCCUPIED									
	\$	\$	\$	\$	\$	\$	\$	\$	\$
<b>1997</b>									
Jun qtr	123	85	93	79	n.p.	101	n.p.	—	99
<b>1998</b>									
Apr	126	88	96	89	67	107	131	—	102
May	119	88	101	90	69	105	121	—	100
Jun	119	83	99	94	70	98	122	—	97
Jun qtr	121	86	99	91	69	103	125	—	99
AVERAGE TAKINGS PER ROOM NIGHT AVAILABLE									
	\$	\$	\$	\$	\$	\$	\$	\$	\$
<b>1997</b>									
Jun qtr	64	44	55	36	n.p.	64	n.p.	—	53
<b>1998</b>									
Apr	66	44	56	44	28	62	70	—	53
May	61	46	59	48	29	60	67	—	53
Jun	62	48	66	55	35	63	64	—	56
Jun qtr	63	46	61	49	31	61	67	—	54
AVERAGE TAKINGS PER GUEST NIGHT									
	\$	\$	\$	\$	\$	\$	\$	\$	\$
<b>1997</b>									
Jun qtr	78	52	n.a.	n.a.	n.a.	n.a.	n.a.	—	n.a.
<b>1998</b>									
Apr	78	53	51	58	39	61	78	—	60
May	76	53	56	59	40	61	76	—	60
Jun	73	49	52	57	39	55	74	—	56
Jun qtr	75	51	53	58	39	59	76	—	59

AUSTRALIAN CAPITAL  
TERRITORY

There were 49 accommodation establishments in the Australian Capital Territory with 15 or more rooms in June 1998, showing no change since June 1997. There were 4,118 guest rooms available, with an average of 84 rooms per establishment.

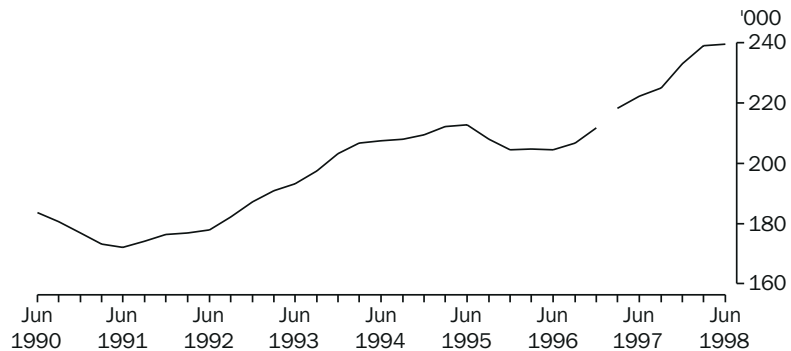
The average nightly number of rooms occupied per establishment in the June quarter 1998 was 50 compared with 47 in the same quarter last year. The average nightly guests per occupied room in the June quarter 1998 were 1.6, staying for an average of 2.1 days.

These accommodation establishments recorded takings of \$22.3 million during the June quarter 1998, an increase of 8% compared with the June quarter in 1997. The average takings per establishment in the June quarter were \$455,600, an increase of 8% compared with the June quarter 1997. The average takings per room night occupied were \$101, an increase of \$2 over the same time last year. The average takings per room night available were \$60, and the average takings per guest night were \$58.

Room nights occupied

The quarterly trend estimate of room nights occupied for the Australian Capital Territory increased very slightly between the March quarter 1997 and the June quarter 1998, to be 239,700. In original terms there was a decrease of nearly 9% to 221,300. The room nights occupied in trend terms were 8% higher than in the June quarter 1997.

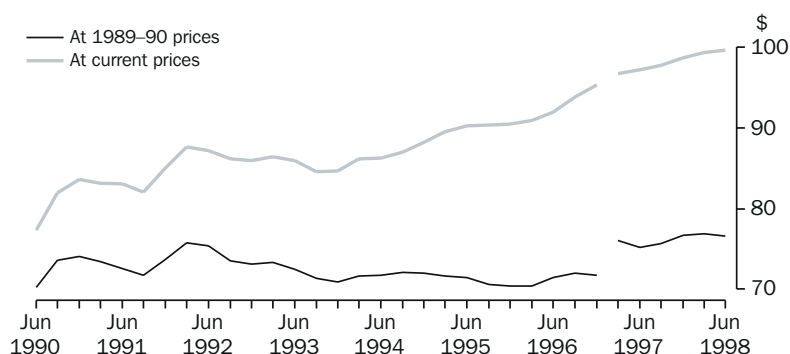
QUARTERLY ROOM NIGHTS OCCUPIED—ACT: TREND



Note: There is a break in series between December quarter 1996 and March quarter 1997 because of scope changes to STA. Refer to Explanatory Notes, paragraphs 3 to 7.

Takings per room night occupied The trend estimate for average takings per room night occupied was \$100 in current price terms, and \$77 in constant price terms in the June quarter 1998. There was only a slight change since the March quarter 1998, although since the June quarter 1997, this represented an increase of \$3 in current terms and \$2 in constant price terms.

AVERAGE TAKINGS PER ROOM NIGHT OCCUPIED—ACT: TREND



Note: There is a break in series between December quarter 1996 and March quarter 1997 because of scope changes to the STA. Refer to Explanatory notes, paragraphs 3 to 7.

## 25

### HOTELS, MOTELS GUEST HOUSES AND SERVICED APARTMENTS—ACT(a)

	Room nights occupied(b)			Takings at current prices(b)			Takings at average 1989-90 prices(c)		
	Original	Seasonally adjusted	Trend	Original	Seasonally adjusted	Trend	Original	Seasonally adjusted	Trend
	'000	'000	'000	\$m	\$m	\$m	\$m	\$m	\$m
<b>1988</b>	647.7	646.6	648.5	46.9	46.8	46.9	48.4	48.3	48.5
<b>1989</b>	642.0	642.1	639.2	49.8	49.6	49.7	48.1	48.0	48.0
<b>1990</b>	694.6	696.2	699.6	56.8	56.8	57.0	51.3	51.4	51.5
<b>1991</b>	696.7	697.2	695.9	58.1	58.2	58.0	50.8	50.9	50.7
<b>1992</b>	758.9	755.6	724.1	62.9	62.5	62.8	54.1	53.8	53.9
<b>1993</b>	798.9	799.6	784.5	67.2	67.3	67.0	56.6	56.7	56.5
<b>1994</b>	826.4	829.7	831.8	71.6	72.0	72.2	59.4	59.7	59.8
<b>1995</b>	838.7	839.6	837.5	75.7	75.7	75.5	59.6	59.7	59.6
<b>1996</b>	821.6	820.9	827.6	76.4	76.4	77.0	58.9	58.7	59.1
<b>1997</b>	903.3	900.9	899.1	88.1	88.0	87.8	68.3	68.1	68.3
<b>1997</b>									
Mar qtr	225.4	231.5	218.2	21.8	22.6	21.1	16.8	17.3	16.6
Jun qtr	209.5	217.0	222.3	20.8	21.1	21.6	16.1	16.3	16.7
Sep qtr	222.0	223.1	225.9	21.5	21.6	22.1	16.7	16.8	17.1
Dec qtr	246.4	229.3	232.7	24.0	22.7	23.0	18.7	17.7	17.9
<b>1998</b>									
Mar qtr	242.8	252.0	239.0	24.3	25.3	23.8	18.8	19.6	18.4
Jun qtr	221.3	229.9	239.7	22.3	22.7	23.9	17.2	17.4	18.3

(a) There is a break in series between December quarter 1996 and March quarter 1997 because of scope changes in the STA. Refer to Explanatory Notes, paragraphs 3 to 7.

(b) For presentation purposes, the quarterly seasonally adjusted and trend estimates for room nights occupied and takings at current prices have been derived by summing the relevant monthly figures. However the graphs show the data plotted on a quarterly basis for the years 1990 to 1998.

(c) The deflator used to revalue current price data in this table is the Canberra All Groups Consumer Price Index. See paragraphs 8 to 10 of the Explanatory Notes.

	Licensed hotels with facilities	Motels and guest houses	Serviced apart- ments	Star grading			Total
				1, 2 and ungraded	3	4 and 5	
ESTABLISHMENTS AND CAPACITY							
	no.	no.	no.	no.	no.	no.	no.
<b>Jun qtr 1997</b>							
Establishments	13	23	13	12	25	12	49
Guest rooms	1 671	1 662	835	679	2 061	1 428	4 168
Rooms per establishment	129	72	64	57	82	119	85
<b>Jun qtr 1998</b>							
Establishments	13	23	13	12	21	16	49
Guest rooms	1 623	1 662	833	776	1 532	1 810	4 118
Rooms per establishment	125	72	64	65	73	113	84
AVERAGE NIGHTLY ROOMS OCCUPIED PER ESTABLISHMENT							
	no.	no.	no.	no.	no.	no.	no.
<b>1997</b>							
Jun qtr	76.6	35.5	37.7	23.5	44.8	75.0	47.0
<b>1998</b>							
Apr	82.2	39.3	45.1	28.9	44.7	79.6	52.2
May	78.3	36.1	42.2	26.7	42.7	73.6	48.9
Jun	74.9	35.4	42.7	27.3	38.8	75.0	47.8
Jun qtr	78.4	36.9	43.3	27.6	42.1	76.1	49.6
AVERAGE NIGHTLY GUESTS PER OCCUPIED ROOM							
	no.	no.	no.	no.	no.	no.	no.
<b>1997</b>							
Jun qtr	1.5	1.7	n.a.	n.a.	n.a.	n.a.	n.a.
<b>1998</b>							
Apr	1.5	1.7	2.0	2.0	1.7	1.6	1.7
May	1.4	1.7	1.7	1.8	1.6	1.5	1.6
Jun	1.5	1.7	1.8	2.0	1.6	1.6	1.7
Jun qtr	1.5	1.7	1.9	1.9	1.6	1.6	1.6
AVERAGE LENGTH OF STAY							
	days	days	days	days	days	days	days
<b>1997</b>							
Jun qtr	1.8	1.8	n.a.	n.a.	n.a.	n.a.	n.a.
<b>1998</b>							
Apr	2.0	1.8	3.4	2.2	2.0	2.2	2.1
May	1.8	1.7	3.3	1.9	1.9	2.0	2.0
Jun	1.9	1.7	3.3	2.1	2.1	2.0	2.1
Jun qtr	1.9	1.7	3.3	2.0	2.0	2.1	2.1



	Licensed hotels with facilities	Motels and guest houses	Serviced apart- ments	Star grading			Total
				1, 2 and ungraded	3	4 and 5	
TAKINGS FROM ACCOMMODATION							
	\$'000	\$'000	\$'000	\$'000	\$'000	\$'000	\$'000
<b>1997</b>							
Jun qtr	10 610	5 240	4 908	1 800	8 452	10 505	20 757
<b>1998</b>							
Apr	3 854	2 026	1 992	695	2 345	4 831	7 872
May	3 832	1 850	1 803	634	2 357	4 496	7 486
Jun	3 449	1 722	1 796	629	1 991	4 346	6 966
Jun qtr	11 135	5 598	5 591	1 958	6 693	13 673	22 324
AVERAGE TAKINGS PER ESTABLISHMENT							
	\$'000	\$'000	\$'000	\$'000	\$'000	\$'000	\$'000
<b>1997</b>							
Jun qtr	816.1	227.8	377.5	150.0	338.1	875.4	423.6
<b>1998</b>							
Apr	296.4	88.1	153.2	57.9	111.7	301.9	160.6
May	294.8	80.4	138.7	52.8	112.2	281.0	152.8
Jun	265.3	74.8	138.1	52.4	94.8	271.6	142.2
Jun qtr	856.5	243.4	430.1	163.2	318.7	854.5	455.6
AVERAGE TAKINGS PER ROOM NIGHT OCCUPIED							
	\$	\$	\$	\$	\$	\$	\$
<b>1997</b>							
Jun qtr	117	70	110	70	83	128	99
<b>1998</b>							
Apr	120	75	113	67	83	126	103
May	122	72	106	64	85	123	101
Jun	118	71	108	64	82	121	99
Jun qtr	120	72	109	65	83	123	101
AVERAGE TAKINGS PER ROOM NIGHT AVAILABLE							
	\$	\$	\$	\$	\$	\$	\$
<b>1997</b>							
Jun qtr	70	35	65	29	45	81	55
<b>1998</b>							
Apr	79	41	80	30	51	89	64
May	76	36	70	26	50	80	59
Jun	71	35	72	27	43	80	56
Jun qtr	75	37	74	28	48	83	60
AVERAGE TAKINGS PER GUEST NIGHT							
	\$	\$	\$	\$	\$	\$	\$
<b>1997</b>							
Jun qtr	81	42	n.a.	n.a.	n.a.	n.a.	n.a.
<b>1998</b>							
Apr	60	36	50	28	42	61	48
May	81	46	63	37	54	81	64
Jun	89	43	60	34	53	85	65
Jun qtr	76	41	57	33	49	75	58

## INTERNATIONAL TOURISM

### INTRODUCTION

The statistics presented in this section are sourced from the overseas arrivals and departures data obtained from incoming and outgoing passenger cards, collected by the Department of Immigration and Multicultural Affairs. The data relate to short-term movements (less than 12 months) of visitors to or from Australia, and departures of Australian residents for short term trips abroad. The statistics presented here supplement those already released in the monthly publication, *Overseas Arrivals and Departures, Australia* (ABS Cat. no. 3401.0).

### VISITOR ARRIVALS

In the June quarter 1998, there were 928,700 short-term visitor arrivals into Australia. This represented an increase of less than 1% over the June quarter 1997, and a decrease of 11% compared with the March quarter 1998.

#### Asian countries

While the volume of arrivals compared with this period last year has remained stable, there have been significant decreases in arrivals from countries in Asia, continuing the decline in visitor numbers from these regions since 1997. Compared with the June quarter 1997, visitor arrivals from Korea were down 79%, Thailand down 57%, Indonesia down 40%, and Malaysia down 22%. Overall, arrivals from Southeast and Northeast Asia decreased by 14% and 9% respectively. However, the number of visitors from some Asian countries did increase during this period, including Singapore (up 23%), Hong Kong (up 25%) and Taiwan (up 14%). Visitor arrivals from Japan remained stable compared with the June quarter 1997, with 168,500 arriving in the June quarter 1998.

#### Increases

An increase in visitors from New Zealand (NZ), Europe and the Americas balanced the decrease from Asia, compared with the June quarter 1997. The number of visitors from NZ in the June quarter 1998 rose by 15% to 184,900, visitors from the United Kingdom (UK) rose by 27% to 82,700, and visitors from the United States of America (USA) rose by 17% to 85,400. This is the first quarter since the early 1990s that Japan has not supplied the largest volume of quarterly visitors.

#### Person days

For visitors arriving in the June quarter 1998, the median intended length of stay was 9.3 days, compared with 10.5 days in the March quarter 1998, and 7.5 days in the June quarter 1997. Visitors from Europe intended to stay for a median of 21.5 days, while visitors from Northeast Asia, including Japan, intended the lowest median stay of 6.7 days.

The number of person days intended to be spent in Australia by visitors arriving in the June quarter 1998 was 22.6 million days, a decrease of 39% over the March quarter 1998, but an increase over the June quarter 1997 of 6%.

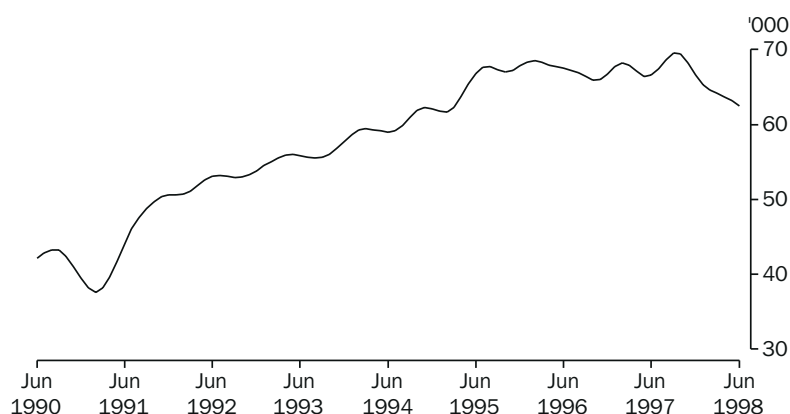
Visitors from Japan There were 168,500 visitors from Japan in the June quarter 1998. This was a slight increase (less than 1%) on the June quarter in 1997, showing that visitor arrivals from Japan were less affected by the Asian economic downturn than visitors from other parts of Asia. Japan accounted for 18% of all arrivals in the June quarter 1998, compared with NZ which accounted for 20%.

In the June quarter 1998, visitors from Japan intended to stay for a total of 2.6 million days, with a median intended length of stay of six days, compared with five days in the June quarter 1997.

The majority (89%) of all Japanese visitors during the June quarter were taking a holiday, and 95% were intending to stay for less than two weeks.

As shown in the following graph, the monthly trend estimate for visitors from Japan shows a gradual decline from September 1997 to reach 62,500 in June 1998.

MONTHLY VISITOR ARRIVALS, RESIDENTS OF JAPAN: TREND

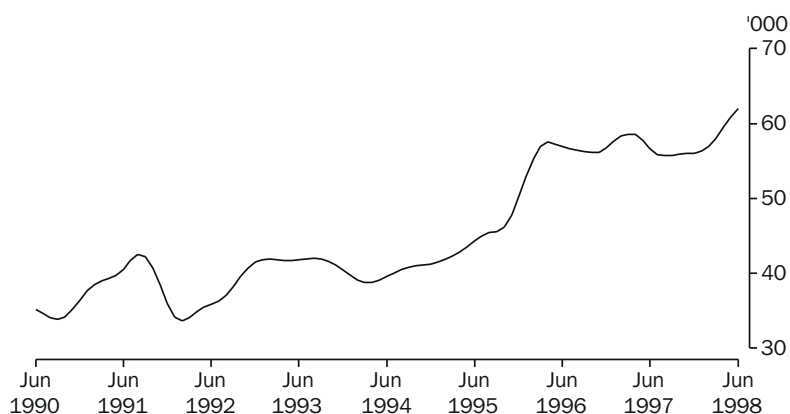


Visitors from New Zealand Visitors from NZ reached their highest level ever in the June quarter 1998, accounting for 184,900, or 20% of all visitor arrivals. This was an increase of 15% compared with the number of visitors arriving in the June quarter 1997. In the June quarter 1998, visitors from NZ intended to spend a total of 3.1 million person days, and stay a median of nine days in Australia. This was an increase of 0.4 million person days, or 15% compared with New Zealanders arriving in the June quarter 1997.

Holidays were the most popular reason for New Zealanders visiting Australia in the June quarter 1998, accounting for 84,000, or 45% of all NZ visitor arrivals.

In trend estimate terms, the monthly arrivals of visitors from NZ have continued to steadily rise in the six months to June 1998, to reach 62,000.

MONTHLY VISITOR ARRIVALS, RESIDENTS OF NEW ZEALAND: TREND



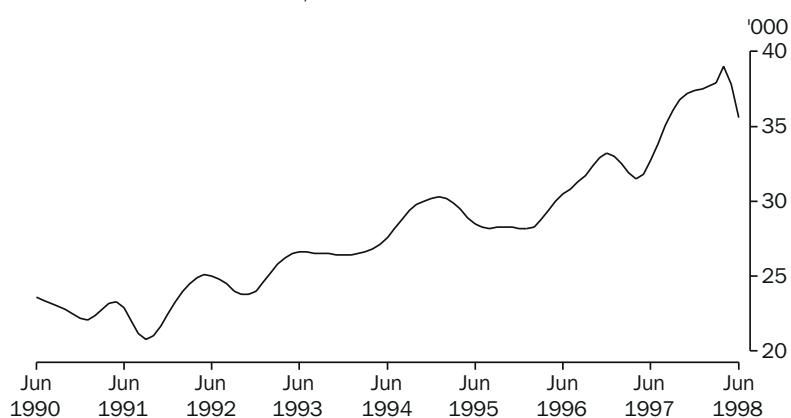
Visitors from the United Kingdom

There were 82,700 visitors from the UK in the June quarter 1998, an increase of 27% compared with the June quarter 1997, but a decrease of 42% compared with the March quarter 1998. In the June quarter 1998, visitors from the UK intended to stay for a median length of 21.5 days, and a total of 3.9 million days. Visitors from the UK accounted for 17% of all person days to be spent in Australia by visitors arriving during this quarter, while only accounting for 9% of total visitor arrivals.

Of the visitors from the UK, 34,600, or 42% were intending to visit friends and relatives. The UK was one of the few source countries where holidays were not the most common reason for travelling to Australia, although 32,600 (or 39% of UK visitors) still came to Australia for holidays. UK holiday makers still accounted for the most days to be spent in Australia by holiday makers from any country (1.8 million).

In trend estimate terms the number of visitors from the UK has steadily increased over the 12 months to June, to peak in April, and has now dropped slightly to 35,600 in June 1998.

MONTHLY VISITOR ARRIVALS, RESIDENTS OF THE UK: TREND



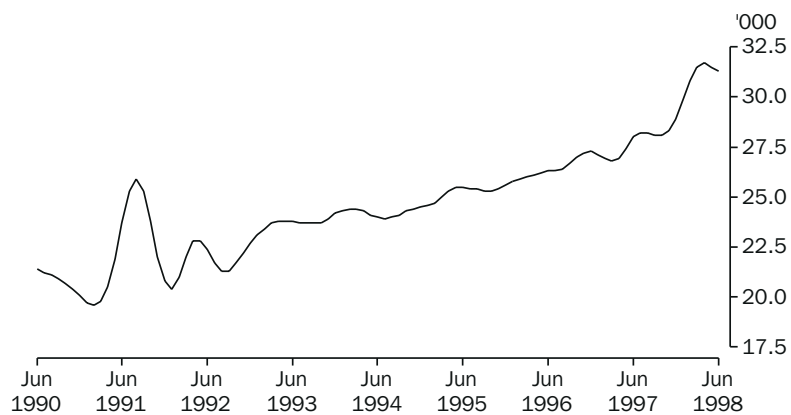
Visitors from the United States of America

There were 85,400 visitors from the USA in the June quarter 1998, an increase of 17% over the June quarter 1997. Visitors from the USA accounted for 9% of all short term arrivals into Australia during the June quarter. Of all short term visitor arrivals from the USA, 39% were travelling for holiday purposes.

Visitors from the USA intended a median length of stay of 12 days, and accounted for 1.8 million, or 8% of all days intended to be spent in Australia by visitors during the June quarter 1998.

The monthly trend estimate for visitor arrivals from the USA, after rising steadily since October 1997, has shown monthly decreases since April 1998 to be 31,300 in June 1998.

MONTHLY VISITOR ARRIVALS, RESIDENTS OF THE USA: TREND



Purpose of journey

Of the 928,700 visitor arrivals during the June quarter 1998, 523,600, or 56%, were for holiday purposes. Holiday visits were the most popular reason for coming to Australia for visitors from all countries, with the exception of those from the UK and China. Of the 82,700 visitors from the UK, the majority (42%) were visiting friends and relatives, and of the 17,500 from China the majority (41%) were visiting for business purposes.

Most of the holiday makers visiting Australia in the June quarter 1998 were from Japan (150,600 or 29% of holiday makers). The next most popular reason for visiting Australia was to visit friends and relatives (190,200 or 20% of total arrivals). New Zealanders accounted for the greatest proportion of these people (55,100 or 29% of those visiting friends or relatives). Business reasons were among the least popular reason to visit Australia (109,400 or 12% of total arrivals) with most business arrivals coming from NZ (27,800 or 25% of business arrivals).

Visitors attending conventions expected to stay an average of 10 days, while visitors for business purposes intended to stay 17.5 days, and those visiting for holiday purposes intended to stay 17.9 days. Visitors for employment purposes intended to stay an average of 171.8 days, accounting for a total of 1.2 million days to be spent in Australia.

<i>Country of residence</i>	<i>Original</i>				<i>Change over Jun qtr 1997</i>	<i>Proportion of total visitors</i>	<i>Median intended length of stay</i>	<i>No. person days</i>
	<i>Apr</i>	<i>May</i>	<i>Jun</i>	<i>Jun qtr 1998</i>				
	<i>'000</i>	<i>'000</i>	<i>'000</i>	<i>'000</i>	<i>%</i>	<i>%</i>	<i>days</i>	<i>'000</i>
<i>Oceania and Antarctica</i>								
New Zealand	60.4	56.4	68.1	184.9	15.2	19.9	8.9	3 066.0
Other	10.2	8.0	7.6	25.8	2.7	2.8	8.3	466.3
<i>Total</i>	<i>70.7</i>	<i>64.4</i>	<i>75.4</i>	<i>210.8</i>	<i>13.5</i>	<i>22.7</i>	<i>8.8</i>	<i>3 532.3</i>
<i>Europe and the former USSR</i>								
France	2.6	1.9	2.1	6.6	-3.1	0.7	16.0	220.8
Germany	9.9	6.3	5.8	21.9	0.2	2.4	20.9	664.6
Italy	2.0	1.9	2.5	6.4	-8.9	0.7	20.2	218.2
Netherlands	2.8	2.0	1.7	6.4	9.2	0.7	28.6	333.9
Switzerland	2.4	1.8	1.6	5.8	15.9	0.6	27.1	254.0
United Kingdom	37.2	22.7	22.9	82.7	27.0	8.9	21.5	3 865.6
Other	10.3	7.4	9.3	27.0	-4.7	2.9	21.7	1 398.7
<i>Total</i>	<i>67.0</i>	<i>44.1</i>	<i>45.8</i>	<i>156.9</i>	<i>12.0</i>	<i>16.9</i>	<i>21.5</i>	<i>6 955.8</i>
<i>Middle East and North Africa</i>								
<i>Total</i>	<i>2.4</i>	<i>1.8</i>	<i>2.5</i>	<i>6.7</i>	<i>-5.2</i>	<i>0.7</i>	<i>28.2</i>	<i>294.8</i>
<i>Southeast Asia</i>								
Indonesia	7.7	8.5	6.2	22.3	-39.7	2.4	14.2	696.3
Malaysia	9.8	12.0	7.0	28.8	-22.2	3.1	8.4	517.7
Singapore	21.9	20.4	33.8	76.1	23.1	8.2	8.2	1 033.8
Thailand	6.0	3.4	2.1	11.5	-57.0	1.2	8.4	305.6
Other	6.1	5.2	3.3	14.7	-4.8	1.6	14.3	583.2
<i>Total</i>	<i>51.5</i>	<i>49.5</i>	<i>52.3</i>	<i>153.3</i>	<i>-13.8</i>	<i>16.5</i>	<i>8.9</i>	<i>3 136.6</i>
<i>Northeast Asia</i>								
China	5.6	6.5	5.5	17.5	10.0	1.9	11.6	706.3
Hong Kong (SAR of China)	15.8	8.4	10.5	34.7	24.9	3.7	8.9	685.4
Japan	64.0	55.4	49.1	168.5	0.7	18.1	5.9	2 620.9
Korea	3.8	3.8	3.9	11.6	-78.5	1.2	10.8	594.4
Taiwan	12.6	11.9	16.4	41.0	14.1	4.4	7.5	576.2
Other	0.2	0.0	0.3	0.5	34.8	0.1	8.8	17.8
<i>Total</i>	<i>102.0</i>	<i>86.1</i>	<i>85.7</i>	<i>273.8</i>	<i>-9.1</i>	<i>29.5</i>	<i>6.7</i>	<i>5 201.0</i>
<i>Southern Asia</i>								
<i>Total</i>	<i>3.5</i>	<i>4.4</i>	<i>3.8</i>	<i>11.6</i>	<i>18.6</i>	<i>1.2</i>	<i>16.6</i>	<i>519.3</i>
<i>The Americas</i>								
Canada	5.4	3.5	3.4	12.4	12.9	1.3	19.5	487.7
United States of America	31.5	24.4	29.4	85.4	16.9	9.2	11.7	1 832.1
Other	1.6	1.4	1.4	4.4	-20.0	0.5	15.5	169.1
<i>Total</i>	<i>38.6</i>	<i>29.3</i>	<i>34.2</i>	<i>102.2</i>	<i>14.1</i>	<i>11.0</i>	<i>12.6</i>	<i>2 488.9</i>
<i>Africa</i>								
<i>Total</i>	<i>5.3</i>	<i>3.8</i>	<i>3.7</i>	<i>12.8</i>	<i>7.0</i>	<i>1.4</i>	<i>15.7</i>	<i>426.2</i>
<i>Other and not stated</i>								
	0.0	0.0	0.5	0.6	305.7	0.1	10.5	10.3
<b>Total</b>	<b>341.1</b>	<b>283.4</b>	<b>304.2</b>	<b>928.7</b>	<b>0.6</b>	<b>100.0</b>	<b>9.3</b>	<b>22 565.1</b>

Country of residence	1997						1998					
	Jul	Aug	Sep	Oct	Nov	Dec	Jan	Feb	Mar	Apr	May	Jun
	'000	'000	'000	'000	'000	'000	'000	'000	'000	'000	'000	'000
ORIGINAL												
Canada	5.3	3.8	4.4	5.4	7.4	8.0	7.3	7.1	7.2	5.4	3.5	3.4
Germany	9.2	8.6	9.8	13.5	12.7	15.0	12.1	14.0	13.4	9.9	6.3	5.8
Hong Kong (SAR of China)	14.9	10.4	9.9	11.7	9.1	15.2	15.1	11.5	11.8	15.8	8.4	10.5
Japan	79.0	80.1	68.6	58.5	61.8	75.1	68.3	69.2	68.0	64.0	55.4	49.1
Malaysia	10.5	10.7	13.3	12.3	11.7	13.7	8.5	9.1	6.2	9.8	12.0	7.0
New Zealand	80.3	59.4	65.6	64.7	52.3	60.4	42.3	38.1	47.8	60.4	56.4	68.1
Papua New Guinea	4.3	3.2	3.7	3.6	4.2	4.6	4.7	2.7	2.4	4.2	2.8	3.1
Singapore	13.5	12.9	17.6	19.1	28.5	39.8	17.0	13.6	18.9	21.9	20.4	33.8
United Kingdom	22.7	22.4	29.0	38.7	47.1	59.3	41.8	54.0	47.4	37.2	22.7	22.9
United States of America	32.8	24.6	22.6	28.2	28.9	32.1	28.6	37.6	35.0	31.5	24.4	29.4
Other and not stated	125.1	94.3	86.5	110.9	115.8	125.0	100.6	96.7	80.5	80.8	71.1	71.1
<b>Total</b>	<b>397.4</b>	<b>330.4</b>	<b>330.9</b>	<b>366.5</b>	<b>379.5</b>	<b>448.3</b>	<b>346.2</b>	<b>353.6</b>	<b>338.6</b>	<b>341.1</b>	<b>283.4</b>	<b>304.2</b>
SEASONALLY ADJUSTED												
Canada	5.6	5.6	5.9	5.0	5.9	5.7	5.8	5.7	5.9	6.3	5.9	5.4
Germany	10.5	11.6	10.9	10.1	11.2	11.7	11.0	11.2	10.7	11.1	10.2	10.2
Hong Kong (SAR of China)	11.7	10.9	16.5	14.0	11.1	11.4	11.3	10.3	12.1	14.9	12.0	14.1
Japan	70.5	68.6	73.7	69.1	67.8	64.3	66.2	65.4	60.3	67.0	64.7	60.7
Malaysia	13.3	11.3	17.5	12.3	7.9	16.8	12.7	6.3	7.1	10.5	9.7	8.6
New Zealand	65.6	50.2	54.4	57.7	56.2	56.5	55.5	58.4	56.2	56.7	62.8	65.1
Papua New Guinea	3.5	4.0	3.6	3.7	4.3	3.5	3.4	3.5	3.2	4.4	3.3	3.3
Singapore	22.6	19.0	22.2	24.0	19.5	19.2	25.0	17.2	23.3	28.5	22.2	23.3
United Kingdom	33.0	34.7	38.0	37.3	35.4	38.0	36.5	40.1	36.4	37.6	38.0	41.1
United States of America	28.8	29.0	29.6	26.2	25.6	30.7	30.6	30.7	30.9	32.4	32.7	30.6
Other and not stated	117.6	106.6	111.4	107.2	105.5	92.7	91.7	83.9	78.1	85.8	92.7	91.1
<b>Total</b>	<b>382.7</b>	<b>351.3</b>	<b>383.6</b>	<b>366.7</b>	<b>350.5</b>	<b>350.5</b>	<b>349.8</b>	<b>332.6</b>	<b>324.2</b>	<b>355.3</b>	<b>354.1</b>	<b>353.7</b>
TREND												
Canada	5.5	5.6	5.6	5.6	5.6	5.7	5.8	5.8	5.9	5.9	5.9	5.9
Germany	10.6	10.7	10.8	11.0	11.1	11.2	11.2	11.1	10.9	10.6	10.5	10.5
Hong Kong (SAR of China)	12.6	12.9	13.1	12.8	12.3	11.8	11.5	11.6	12.1	12.7	12.9	12.7
Japan	67.4	68.6	69.5	69.4	68.2	66.6	65.3	64.6	64.2	63.7	63.2	62.5
Malaysia	13.0	13.2	13.4	13.2	12.7	11.8	10.7	9.8	9.2	9.1	9.1	9.3
New Zealand	55.8	55.7	55.7	55.9	56.0	56.0	56.3	56.9	57.9	59.5	60.9	62.0
Papua New Guinea	3.7	3.8	3.8	3.8	3.8	3.7	3.5	3.4	3.4	3.5	3.7	3.7
Singapore	21.1	21.5	21.6	21.4	21.1	21.1	21.5	22.2	22.9	23.7	23.8	23.5
United Kingdom	33.8	35.1	36.1	36.8	37.2	37.4	37.5	37.7	37.9	39.0	37.8	35.6
United States of America	28.2	28.2	28.1	28.1	28.3	28.9	29.9	30.8	31.5	31.7	31.5	31.3
Other and not stated	115.5	113.6	110.4	106.0	100.7	95.1	89.8	86.1	85.1	86.1	90.3	95.6
<b>Total</b>	<b>367.4</b>	<b>368.7</b>	<b>368.1</b>	<b>363.9</b>	<b>357.0</b>	<b>349.3</b>	<b>342.9</b>	<b>340.1</b>	<b>341.1</b>	<b>345.5</b>	<b>349.6</b>	<b>352.7</b>

<i>Country of residence</i>	<i>Main purpose of journey</i>							<i>Total</i>
	<i>Convention/ conference</i>	<i>Business</i>	<i>Visiting relatives/ friends</i>	<i>Holiday</i>	<i>Employment</i>	<i>Education</i>	<i>Other and not stated</i>	
	'000	'000	'000	'000	'000	'000	'000	'000
<i>Oceania and Antarctica</i>								
New Zealand	4.7	27.8	55.1	84.0	1.9	1.2	10.3	184.9
Other	1.1	3.0	5.6	10.3	0.1	1.0	4.9	25.8
<i>Total</i>	5.7	30.8	60.6	94.3	2.0	2.2	15.2	210.8
<i>Europe and the former USSR</i>								
France	0.3	1.2	1.1	3.0	0.1	0.3	0.6	6.6
Germany	0.4	2.3	3.1	14.9	0.0	0.5	0.8	21.9
Italy	0.4	1.1	1.4	2.9	0.0	0.2	0.4	6.4
Netherlands	0.2	1.0	1.7	3.0	0.1	0.1	0.4	6.4
Switzerland	0.2	0.7	1.0	3.5	0.0	0.2	0.2	5.8
United Kingdom	1.2	8.4	34.6	32.6	1.6	0.2	4.2	82.7
Other	1.0	4.2	7.0	11.5	0.6	0.5	2.2	27.0
<i>Total</i>	3.7	19.0	49.8	71.4	2.4	1.9	8.8	156.9
<i>Middle East and North Africa</i>								
<i>Total</i>	0.3	0.7	2.2	2.6	0.0	0.2	0.6	6.7
<i>Southeast Asia</i>								
Indonesia	0.5	2.0	4.8	10.1	0.2	1.8	2.9	22.3
Malaysia	0.5	2.2	6.5	17.5	0.1	0.7	1.4	28.8
Singapore	0.8	6.5	9.5	55.8	0.2	1.3	2.0	76.1
Thailand	0.3	0.9	1.7	6.6	0.1	0.9	1.0	11.5
Other	0.5	1.3	5.0	5.0	0.2	0.7	1.8	14.7
<i>Total</i>	2.6	13.0	27.5	94.9	0.7	5.5	9.0	153.3
<i>Northeast Asia</i>								
China	0.6	7.2	2.9	4.0	0.0	0.9	1.9	17.5
Hong Kong (SAR of China)	0.7	3.6	8.8	19.5	0.1	1.1	1.0	34.7
Japan	0.6	7.1	3.0	150.6	0.2	2.3	4.7	168.5
Korea	0.4	1.7	2.9	4.5	0.0	1.1	0.9	11.6
Taiwan	0.4	1.9	2.0	32.2	0.1	1.0	3.5	41.0
Other	0.0	0.0	0.1	0.3	0.0	0.0	0.0	0.5
<i>Total</i>	2.8	21.5	19.7	211.0	0.4	6.5	12.0	273.8
<i>Southern Asia</i>								
<i>Total</i>	0.4	1.4	3.1	4.7	0.2	0.6	1.2	11.6
<i>The Americas</i>								
Canada	0.5	1.9	4.1	4.7	0.2	0.2	0.7	12.4
United States of America	4.8	18.6	17.7	33.5	0.8	3.3	6.8	85.4
Other	0.3	0.4	1.0	2.0	0.0	0.4	0.4	4.4
<i>Total</i>	5.5	20.9	22.9	40.1	1.0	3.8	7.9	102.2
<i>Africa</i>								
<i>Total</i>	0.4	2.1	4.3	4.4	0.1	0.2	1.3	12.8
<i>Not stated</i>								
<i>Total</i>	0.0	0.0	0.0	0.1	0.0	0.0	0.5	0.6
<b>Total</b>	<b>21.5</b>	<b>109.4</b>	<b>190.2</b>	<b>523.6</b>	<b>6.7</b>	<b>20.7</b>	<b>56.5</b>	<b>928.7</b>



Country of residence	Main purpose of journey							Total
	Convention/ conference	Business	Visiting relatives/ friends	Holiday	Employment	Education	Other and not stated	
	'000	'000	'000	'000	'000	'000	'000	'000
<b>Oceania and Antarctica</b>								
New Zealand	29.9	295.8	1 026.4	1 167.6	332.3	55.4	158.7	3 066.0
Other	8.9	31.8	169.0	131.6	4.7	61.8	58.4	466.3
<i>Total</i>	38.8	327.6	1 195.4	1 299.3	336.9	117.2	217.1	3 532.3
<b>Europe and the former USSR</b>								
France	6.3	27.7	42.9	85.2	13.3	21.8	23.6	220.8
Germany	5.1	56.0	105.7	408.5	5.4	54.7	29.2	664.6
Italy	4.3	21.4	78.5	81.8	4.2	14.6	13.4	218.2
Netherlands	2.4	20.8	63.6	207.4	11.5	9.6	18.5	333.9
Switzerland	3.1	12.6	36.2	160.1	2.7	26.7	12.6	254.0
United Kingdom	12.2	257.7	1 183.8	1 829.7	344.0	36.3	201.9	3 865.6
Other	11.7	81.3	359.4	648.8	122.9	63.0	111.6	1 398.7
<i>Total</i>	44.9	477.6	1 870.1	3 421.6	504.0	226.9	410.8	6 955.8
<b>Middle East and North Africa</b>								
<i>Total</i>	3.5	15.6	119.7	113.1	3.0	24.3	15.6	294.8
<b>Southeast Asia</b>								
Indonesia	4.5	38.1	138.0	177.4	4.4	263.5	70.3	696.3
Malaysia	4.3	24.7	167.9	176.0	13.5	106.4	24.9	517.7
Singapore	5.6	74.7	170.6	557.6	15.0	176.0	34.3	1 033.8
Thailand	4.7	17.8	62.7	72.9	5.8	122.5	19.3	305.6
Other	6.3	25.8	291.5	93.4	14.4	107.6	44.2	583.2
<i>Total</i>	25.4	181.0	830.7	1 077.3	53.1	775.9	193.1	3 136.6
<b>Northeast Asia</b>								
China	9.6	153.5	322.5	66.6	6.1	101.7	46.3	706.3
Hong Kong (SAR of China)	5.2	40.3	191.3	222.0	8.1	193.7	24.8	685.4
Japan	4.5	167.1	87.0	1 743.8	38.6	411.5	168.4	2 620.9
Korea	3.8	34.0	122.6	169.7	6.7	215.6	42.1	594.4
Taiwan	4.3	26.6	77.1	269.1	9.6	146.9	42.5	576.2
Other	0.1	0.6	3.8	6.5	0.0	3.7	3.0	17.8
<i>Total</i>	27.4	422.2	804.4	2 477.7	69.2	1 073.0	327.1	5 201.0
<b>Southern Asia</b>								
<i>Total</i>	5.0	44.6	210.8	100.1	27.0	90.9	41.0	519.3
<b>The Americas</b>								
Canada	7.0	45.2	134.5	212.3	37.9	23.5	27.4	487.7
United States of America	55.7	339.6	503.3	525.4	93.6	144.0	170.4	1 832.1
Other	2.6	8.9	58.4	46.4	1.8	38.5	12.6	169.1
<i>Total</i>	65.3	393.6	696.2	784.1	133.3	206.1	210.3	2 488.9
<b>Africa</b>								
<i>Total</i>	5.3	52.7	166.7	108.5	24.5	26.0	42.4	426.2
<b>Not stated</b>								
	0.1	0.5	0.2	1.1	0.0	0.3	8.2	10.3
<b>Total</b>	<b>215.7</b>	<b>1 915.4</b>	<b>5 894.1</b>	<b>9 382.8</b>	<b>1 151.0</b>	<b>2 540.6</b>	<b>1 465.6</b>	<b>22 565.1</b>

Purpose of journey	Intended length of stay							Total(a)
	Under 1 week	1 week and under 2 weeks	2 weeks and under 1 month	1 month and under 2 months	2 months and under 3 months	3 months and under 6 months	6 months and under 12 months	
	'000	'000	'000	'000	'000	'000	'000	'000
JAPAN								
Convention/conference	0.2	0.4	0.0	0.0	0.0	0.0	0.0	0.6
Business	4.2	1.8	0.3	0.2	0.1	0.1	0.4	7.1
Visiting relatives/friends	0.9	0.9	0.6	0.3	0.0	0.2	0.1	3.0
Holiday	110.3	33.2	2.1	0.8	0.5	1.1	2.5	150.6
Employment	0.0	0.0	0.0	0.0	0.0	0.0	0.1	0.2
Education	0.0	0.3	0.0	0.0	0.2	0.6	1.2	2.3
Other and not stated	1.7	2.3	0.2	0.0	0.1	0.1	0.4	4.7
<i>Total</i>	<i>117.2</i>	<i>38.9</i>	<i>3.2</i>	<i>1.4</i>	<i>1.0</i>	<i>2.1</i>	<i>4.7</i>	<i>168.5</i>
NEW ZEALAND								
Convention/conference	3.1	1.2	0.3	0.1	0.0	0.0	0.0	4.7
Business	20.3	4.3	1.5	0.5	0.6	0.4	0.3	27.8
Visiting relatives/friends	13.6	18.1	15.3	4.8	1.5	1.2	0.7	55.1
Holiday	24.0	34.8	20.2	2.4	0.8	0.9	0.8	84.0
Employment	0.1	0.1	0.1	0.1	0.1	0.2	1.2	1.9
Education	0.3	0.5	0.2	0.0	0.0	0.1	0.1	1.2
Other and not stated	5.0	3.3	1.0	0.4	0.1	0.2	0.2	10.3
<i>Total</i>	<i>66.3</i>	<i>62.3</i>	<i>38.6</i>	<i>8.3</i>	<i>3.1</i>	<i>3.1</i>	<i>3.3</i>	<i>184.9</i>
SINGAPORE								
Convention/conference	0.4	0.3	0.0	0.0	0.0	0.0	0.0	0.8
Business	3.7	1.8	0.6	0.2	0.0	0.1	0.1	6.5
Visiting relatives/friends	1.8	3.6	2.8	0.7	0.2	0.4	0.1	9.5
Holiday	17.0	29.9	7.7	0.7	0.3	0.1	0.2	55.8
Employment	0.0	0.0	0.1	0.0	0.0	0.0	0.0	0.2
Education	0.2	0.1	0.1	0.0	0.1	0.2	0.5	1.3
Other and not stated	0.5	1.1	0.2	0.1	0.0	0.1	0.0	2.0
<i>Total</i>	<i>23.6</i>	<i>36.7</i>	<i>11.5</i>	<i>1.8</i>	<i>0.6</i>	<i>0.8</i>	<i>1.0</i>	<i>76.1</i>
UNITED KINGDOM								
Convention/conference	0.2	0.6	0.3	0.0	0.0	0.0	0.0	1.2
Business	2.4	2.2	1.7	0.8	0.4	0.6	0.3	8.4
Visiting relatives/friends	2.0	3.6	14.1	10.3	2.1	1.5	0.9	34.6
Holiday	2.9	5.4	11.8	4.3	2.3	2.6	3.3	32.6
Employment	0.0	0.1	0.2	0.1	0.0	0.1	1.1	1.6
Education	0.0	0.0	0.0	0.0	0.0	0.1	0.1	0.2
Other and not stated	0.7	1.8	0.5	0.4	0.1	0.3	0.4	4.2
<i>Total</i>	<i>8.2</i>	<i>13.7</i>	<i>28.6</i>	<i>15.9</i>	<i>4.9</i>	<i>5.3</i>	<i>6.1</i>	<i>82.7</i>
UNITED STATES OF AMERICA								
Convention/conference	1.0	2.5	1.1	0.0	0.1	0.0	0.0	4.8
Business	7.5	6.0	2.8	0.8	0.4	0.7	0.4	18.6
Visiting relatives/friends	1.0	4.1	6.7	3.6	1.1	0.9	0.3	17.7
Holiday	6.4	13.6	10.1	2.2	0.7	0.3	0.2	33.5
Employment	0.1	0.1	0.2	0.1	0.0	0.0	0.3	0.8
Education	0.1	0.5	1.6	0.2	0.3	0.4	0.2	3.3
Other and not stated	1.2	3.6	0.8	0.5	0.2	0.3	0.2	6.8
<i>Total</i>	<i>17.3</i>	<i>30.3</i>	<i>23.4</i>	<i>7.4</i>	<i>2.7</i>	<i>2.6</i>	<i>1.7</i>	<i>85.4</i>

(a) Includes 'Not stated'.

...continued

Purpose of journey	Intended length of stay							Total(a)
	Under 1 week	1 week and under 2 weeks	2 weeks and under 1 month	1 month and under 2 months	2 months and under 3 months	3 months and under 6 months	6 months and under 12 months	
	'000	'000	'000	'000	'000	'000	'000	'000
OTHER AND NOT STATED								
Convention/conference	2.8	4.5	1.9	0.4	0.0	0.0	0.0	9.4
Business	13.8	14.1	6.6	3.0	1.2	1.7	0.6	41.0
Visiting relatives/friends	6.3	13.6	17.0	15.2	5.6	8.7	3.7	70.3
Holiday	45.5	58.6	32.7	16.5	4.6	6.0	3.3	167.1
Employment	0.5	0.0	0.0	0.2	0.2	0.3	1.0	2.0
Education	0.4	0.9	0.8	1.2	1.7	2.7	4.7	12.4
Other and not stated	8.5	12.5	2.4	1.7	0.8	0.9	1.2	28.1
<b>Total</b>	<b>78.1</b>	<b>104.5</b>	<b>61.5</b>	<b>38.1</b>	<b>14.2</b>	<b>20.2</b>	<b>14.4</b>	<b>331.1</b>
TOTAL								
Convention/conference	7.7	9.5	3.6	0.5	0.1	0.0	0.0	21.5
Business	51.9	30.2	13.5	5.5	2.7	3.6	2.1	109.4
Visiting relatives/friends	25.6	43.9	56.5	34.9	10.5	12.9	5.8	190.2
Holiday	206.1	175.5	84.6	26.9	9.2	11.0	10.3	523.6
Employment	0.7	0.3	0.6	0.5	0.3	0.6	3.7	6.7
Education	1.0	2.3	2.7	1.4	2.3	4.1	6.8	20.7
Other and not stated	17.6	24.6	5.1	3.1	1.3	1.9	2.4	56.1
<b>Total</b>	<b>310.7</b>	<b>286.4</b>	<b>166.8</b>	<b>72.9</b>	<b>26.5</b>	<b>34.1</b>	<b>31.2</b>	<b>928.7</b>

(a) Includes 'Not stated'.

**Length of stay** During the June quarter 1998, 310,700, or 33% of the 928,700 arrivals intended to stay for less than one week, while 286,400, or 31% intended to stay between one and two weeks. There were 331,600, or 36% of visitors intending to stay for more than two weeks, with most of these (166,800) intending to stay for between two weeks and one month. Holidays were cited by more visitors intending to stay for up to one month, while for those intending to visit for more than one month, visiting friends or relatives was the most popular reason cited.

Of the 168,500 visitor arrivals from Japan, 70% intended to stay for less than one week, with the majority of these (110,300) being for holiday purposes.

Purpose of journey	Age group (years)							Total
	0-14	15-24	25-34	35-44	45-54	55-64	65 and over	
	'000	'000	'000	'000	'000	'000	'000	'000
JAPAN								
Convention/conference	0.0	0.0	0.1	0.2	0.2	0.1	0.0	0.6
Business	0.0	0.1	1.4	1.9	2.4	1.2	0.1	7.1
Visiting relatives/friends	0.4	0.5	0.9	0.4	0.5	0.2	0.1	3.0
Holiday	5.0	22.3	44.4	16.8	28.7	22.5	10.9	150.6
Employment	0.0	0.0	0.1	0.0	0.0	0.0	0.0	0.2
Education	0.1	1.8	0.4	0.0	0.0	0.0	0.0	2.3
Other and not stated	0.5	0.7	1.1	0.8	1.2	0.4	0.2	4.7
<i>Total</i>	6.0	25.6	48.4	20.1	33.1	24.2	11.1	168.5
NEW ZEALAND								
Convention/conference	0.0	0.3	0.6	1.6	1.4	0.6	0.2	4.7
Business	0.0	1.2	6.3	9.5	7.6	2.9	0.3	27.8
Visiting relatives/friends	6.6	5.7	9.7	7.9	8.9	7.3	8.9	55.1
Holiday	12.0	8.5	15.4	15.4	14.4	9.3	9.1	84.0
Employment	0.0	0.7	0.6	0.3	0.2	0.1	0.0	1.9
Education	0.1	0.5	0.2	0.3	0.1	0.1	0.0	1.2
Other and not stated	1.0	0.2	2.5	2.2	1.3	0.9	0.6	10.3
<i>Total</i>	19.7	18.7	35.2	37.2	33.8	21.2	19.1	184.9
SINGAPORE								
Convention/conference	0.0	0.0	0.2	0.3	0.2	0.0	0.0	0.8
Business	0.0	0.0	1.8	2.8	1.6	0.3	0.0	6.5
Visiting relatives/friends	1.4	1.2	1.7	1.5	2.0	1.1	0.6	9.5
Holiday	10.6	6.6	12.9	12.7	7.5	4.0	1.6	55.8
Employment	0.0	0.0	0.0	0.1	0.0	0.0	0.0	0.2
Education	0.1	0.8	0.3	0.1	0.1	0.0	0.0	1.3
Other and not stated	0.3	0.1	0.4	0.5	0.3	0.3	0.0	2.0
<i>Total</i>	12.4	8.7	17.2	18.0	11.8	5.7	2.3	76.1
UNITED KINGDOM								
Convention/conference	0.0	0.0	0.2	0.5	0.3	0.1	0.0	1.2
Business	0.0	0.3	2.4	2.9	2.0	0.7	0.1	8.4
Visiting relatives/friends	2.6	3.2	6.2	3.8	5.2	6.8	6.7	34.6
Holiday	1.7	8.4	9.0	3.5	4.4	3.5	2.0	32.6
Employment	0.0	0.5	0.7	0.1	0.2	0.0	0.0	1.6
Education	0.0	0.1	0.1	0.0	0.0	0.0	0.0	0.2
Other and not stated	0.4	0.7	1.3	0.6	0.5	0.5	0.3	4.2
<i>Total</i>	4.7	13.2	20.0	11.5	12.6	11.7	9.1	82.7
UNITED STATES OF AMERICA								
Convention/conference	0.0	0.2	1.1	1.3	1.3	0.7	0.3	4.8
Business	0.0	0.4	3.4	6.3	6.0	2.1	0.3	18.6
Visiting relatives/friends	2.0	2.9	3.1	2.4	2.7	2.5	2.2	17.7
Holiday	2.9	3.8	5.5	4.9	5.2	5.8	5.4	33.5
Employment	0.0	0.0	0.3	0.2	0.1	0.0	0.1	0.8
Education	0.9	1.7	0.1	0.1	0.3	0.1	0.0	3.3
Other and not stated	0.8	1.9	1.1	1.4	0.9	0.3	0.4	6.8
<i>Total</i>	6.7	11.0	14.6	16.7	16.4	11.4	8.6	85.4

...continued

Purpose of journey	Age group (years)							Total
	0-14	15-24	25-34	35-44	45-54	55-64	65 and over	
	'000	'000	'000	'000	'000	'000	'000	'000
OTHER AND NOT STATED								
Convention/conference	0.0	0.2	2.2	3.1	2.5	1.1	0.3	9.5
Business	0.0	1.3	11.4	14.6	9.6	3.8	0.3	41.0
Visiting relatives/friends	6.6	7.6	12.2	12.0	12.9	10.7	8.4	70.4
Holiday	16.1	20.5	44.6	34.6	26.9	15.9	8.5	167.1
Employment	0.0	0.5	0.8	0.5	0.3	0.1	0.0	2.2
Education	0.8	6.3	3.3	1.2	0.6	0.2	0.0	12.4
Other and not stated	2.4	3.0	7.6	7.2	5.0	2.1	1.2	28.5
<b>Total</b>	<b>26.1</b>	<b>39.4</b>	<b>82.1</b>	<b>73.1</b>	<b>57.7</b>	<b>33.8</b>	<b>18.9</b>	<b>331.0</b>
TOTAL								
Convention/conference	0.0	0.7	4.3	7.0	5.9	2.6	1.0	21.5
Business	0.0	3.4	26.8	38.0	29.2	10.9	1.1	109.4
Visiting relatives/friends	19.7	21.0	33.8	28.1	32.2	28.5	26.9	190.2
Holiday	48.4	70.2	131.7	87.9	87.1	60.9	37.3	523.6
Employment	0.0	1.7	2.6	1.3	0.7	0.2	0.1	6.7
Education	2.1	11.2	4.3	1.7	1.0	0.4	0.0	20.7
Other and not stated	5.3	8.3	14.1	12.6	9.2	4.4	2.6	56.5
<b>Total</b>	<b>75.5</b>	<b>116.5</b>	<b>217.6</b>	<b>176.5</b>	<b>165.4</b>	<b>108.1</b>	<b>69.0</b>	<b>928.7</b>

Age of visitors Visitors in the 25-34 year age group accounted for 23% of the 928,700 arrivals during the June quarter 1998, followed by 35-44 year olds (19%) and 45-54 year olds (18%). These were similar proportions to those recorded for the March quarter 1998 (23%, 17% and 16% respectively).

Across all age groups holidays account for most visitor arrivals, followed by visiting friends and relatives. The exception to this was in the 35-44 year age group, where business travel was the second most popular reason for visiting Australia.

#### VISITOR DEPARTURES

There were 968,800 visitors departing Australia in the June quarter 1998, a slight decrease of less than 1% when compared with the 974,000 departures during the June quarter 1997. Of the visitors departing in the June quarter 1998, 70% had spent most of their time in either New South Wales (42% or 410,400) or Queensland (29% or 283,400). New South Wales was the main State or Territory of stay for visitors from nearly all countries, with a few exceptions. Queensland was cited by 46% of all Japanese visitors as being the State or Territory in which they spent most time, followed by 44% who spent most time in New South Wales. New Zealanders spent most of their time in either New South Wales or Queensland (38% in each State).

Of visitors who spent most time in Victoria, the highest number were from New Zealand (27,600 or 21%), and of those that spent the most time in Western Australia, the highest number were from Singapore (25,400, or 26%). In fact, visitors from Singapore and Malaysia (9,400) spent more time in Western Australia than in any other State or Territory.

<i>Country of residence</i>	<i>State or Territory in which most time was spent</i>								<i>Aust.(a)</i>
	<i>NSW</i>	<i>Vic.</i>	<i>Qld</i>	<i>SA</i>	<i>WA</i>	<i>Tas.</i>	<i>NT</i>	<i>ACT</i>	
	<i>'000</i>	<i>'000</i>	<i>'000</i>	<i>'000</i>	<i>'000</i>	<i>'000</i>	<i>'000</i>	<i>'000</i>	<i>'000</i>
<i>Oceania and Antarctica</i>									
New Zealand	65.3	27.6	64.2	3.0	7.0	1.2	0.6	1.6	170.8
Other	11.2	2.5	10.7	0.1	0.3	0.1	0.2	0.5	25.6
<i>Total</i>	76.5	30.1	74.9	3.1	7.3	1.3	0.8	2.1	196.4
<i>Europe and the former USSR</i>									
France	4.2	0.9	1.0	0.2	0.8	0.0	0.2	0.1	7.5
Germany	10.3	4.0	8.8	1.2	2.2	0.3	1.5	0.2	28.6
Italy	3.0	1.7	1.1	0.3	0.7	0.0	0.2	0.1	7.1
Netherlands	2.9	1.8	2.0	0.3	0.9	0.1	0.4	0.1	8.4
Switzerland	2.9	0.7	1.9	0.3	1.4	0.1	0.3	0.1	7.7
United Kingdom	43.7	14.4	21.0	5.4	17.6	1.1	1.7	0.8	105.7
Other	15.0	6.3	6.5	1.2	3.4	0.2	1.0	0.4	34.1
<i>Total</i>	81.9	29.7	42.4	9.0	27.0	1.8	5.3	1.8	199.2
<i>Middle East and North Africa</i>									
<i>Total</i>	3.4	1.6	0.8	0.2	0.5	0.1	0.0	0.1	6.8
<i>Southeast Asia</i>									
Indonesia	6.6	4.1	1.7	0.1	5.9	0.0	0.7	0.1	19.4
Malaysia	7.4	6.6	5.4	0.7	9.4	0.1	0.1	0.1	30.0
Singapore	16.1	11.9	22.6	1.4	25.4	0.6	0.5	0.2	78.8
Thailand	5.9	3.2	1.4	0.2	1.6	0.1	0.2	0.2	12.6
Other	6.1	2.3	2.9	0.4	1.4	0.0	0.3	0.2	13.5
<i>Total</i>	42.1	28.1	33.9	2.9	43.6	0.8	1.8	0.9	154.3
<i>Northeast Asia</i>									
China	10.1	3.4	2.5	0.2	0.6	0.0	0.0	0.2	17.1
Hong Kong (SAR of China)	15.4	5.6	9.9	0.7	2.2	0.1	0.1	0.2	34.3
Japan	77.8	7.5	80.9	1.7	6.8	0.1	0.8	0.8	176.5
Korea	7.3	1.0	2.1	0.2	0.4	0.0	0.0	0.1	11.2
Taiwan	24.8	2.3	12.1	0.3	0.6	0.1	0.0	0.1	40.3
Other	0.3	0.1	0.2	0.0	0.1	0.0	0.0	0.0	0.7
<i>Total</i>	135.7	20.0	107.7	3.1	10.7	0.3	1.0	1.5	280.1
<i>Southern Asia</i>									
<i>Total</i>	5.1	3.0	2.2	0.2	0.7	0.0	0.0	0.1	11.3
<i>The Americas</i>									
Canada	7.9	2.5	3.3	0.6	1.3	0.1	0.2	0.2	16.2
United States of America	48.7	12.3	15.5	1.9	4.3	0.5	1.2	0.9	85.5
Other	2.9	0.7	0.6	0.2	0.4	0.0	0.0	0.1	4.9
<i>Total</i>	59.5	15.6	19.4	2.6	6.0	0.6	1.5	1.2	106.5
<i>Africa</i>									
<i>Total</i>	6.2	1.7	2.0	0.5	3.0	0.1	0.0	0.1	13.5
<i>Not stated</i>	0.1	0.0	0.0	—	0.0	—	0.1	—	0.8
<b>Total</b>	<b>410.4</b>	<b>129.8</b>	<b>283.4</b>	<b>21.5</b>	<b>98.8</b>	<b>5.0</b>	<b>10.5</b>	<b>7.8</b>	<b>968.8</b>

(a) Includes 'Other Territories' and 'Not stated'.

DEPARTURES OF  
AUSTRALIAN RESIDENTS  
FOR SHORT-TERM TRIPS

In the June quarter 1998, there were 817,600 departures by Australian residents for short term trips overseas. This was an increase of 10% over the June quarter 1997, and an increase of 26% over the March quarter 1998.

Country The most popular destination for residents departing was the UK, accounting for 109,000 (13%) of departures in the June quarter, followed closely by NZ, accounting for 102,500 (13%) departures. Departures to the UK and NZ were up by 4% and 19% respectively, compared with the June quarter 1997.

Destination countries accounting for the largest proportional increases in residents departing between the June quarters of 1997 and 1998 were Thailand, up by 73% to 32,500; Fiji, up by 56% to 28,300; and Viet Nam, up by 43% to 10,500.

Compared with the same quarter in 1997, most country destinations showed increases in the number of Australian visitors, except for Hong Kong, where the number was down by 17% to 33,800; Canada, down by 11% to 13,300; the USA, down by 7% to 84,900; and the Philippines, down by 2.1% to 14,700.

Purpose of journey Of the 817,600 departures by residents in the June quarter 1998, 48% (390,100) were for holiday purposes, and 25% (201,400) were to visit friends and relatives.

Indonesia was once again the most popular destination for holiday makers (59,200), followed by the UK (54,800), and the USA (38,800). These levels were similar to those for the June quarter 1997, where these countries respectively accounted for 50,600, 57,500 and 43,200 of all holiday departures.

Of the 201,400 departures to visit friends and relatives, NZ was the most popular destination (36,300), followed by the UK (35,300).

NZ was also the most popular destination for business purposes, accounting for 24,500 of the 135,900 business departures, followed by the USA (19,000).

The USA was the most popular destination in the June quarter 1998 for attending conventions, accounting for 7,900 of the 32,900 departures for this purpose.

**Length of stay** Residents departing for overseas in the June quarter 1998 intended to spend a total of 31.7 million days abroad (a median of 18.3 days), of which 6.9 million days, or 22%, were to be spent in the UK. Europe as a destination accounted for 46%, or 14.7 million, of the days to be spent abroad. Visitors to the USA intended spending 3 million days.

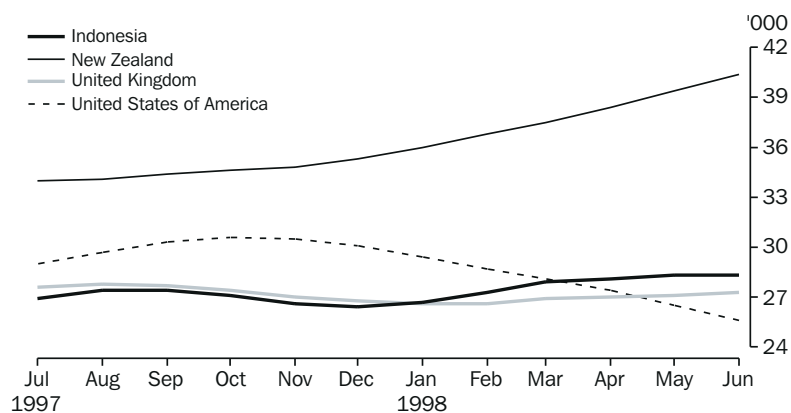
Visitors to the UK intended spending an average of 63 days abroad, while those visiting the USA intended spending 36 days abroad.

Holidays accounted for 13.2 million, or 42%, of the person days to be spent abroad, with those taking holidays intending to spend an average of 34 days away. Residents intending to visit friends and relatives abroad intended staying an average of 50 days.

**Trend estimates** In trend estimate terms the monthly departures of Australian residents over the 12 months to June have steadily increased to be 264,500 in June 1998.

As shown in the graph below the trend estimate for Australian resident departures abroad for the 12 months to June 1998 show that departures to the UK and Indonesia have been constant. The trend estimate for departures to NZ have shown a steady increase to be 40,400 in June 1998, while departures to the USA have steadily declined to be 25,600 in June.

MONTHLY OVERSEAS DEPARTURES, AUSTRALIAN RESIDENTS: TREND





Country of intended stay	<i>Original</i>				Change over Jun qtr 1997	Proportion of total visitors	Median intended length of stay	No. person days
	Apr	May	Jun	Jun qtr 1998				
	'000	'000	'000	'000	%	%	days	'000
<b>Oceania and Antarctica</b>								
Fiji	9.7	7.8	10.7	28.3	56.1	3.5	10.1	460.0
New Zealand	44.4	30.1	28.0	102.5	19.0	12.5	9.6	1 532.0
Other	10.3	10.6	12.0	33.0	3.9	4.0	9.7	764.1
<i>Total</i>	64.4	48.6	50.8	163.7	20.4	20.0	9.8	2 756.1
<b>Europe and the former USSR</b>								
France	3.8	4.3	4.2	12.3	18.0	1.5	30.4	540.6
Germany	3.6	3.7	4.4	11.8	12.5	1.4	30.7	593.9
Greece	3.1	7.0	7.8	17.8	13.0	2.2	50.0	1 610.9
Italy	6.3	8.5	7.2	21.9	3.0	2.7	37.7	1 185.5
United Kingdom	29.9	40.6	38.5	109.0	3.5	13.3	35.9	6 899.4
Other	13.4	24.0	22.5	59.9	19.3	7.3	45.5	3 894.2
<i>Total</i>	60.0	88.1	84.6	232.7	9.0	28.5	40.0	14 724.5
<b>Middle East and North Africa</b>								
<i>Total</i>	6.3	8.1	7.0	21.4	9.9	2.6	50.0	1 757.0
<b>Southeast Asia</b>								
Indonesia	24.5	23.8	25.9	74.2	6.3	9.1	10.6	1 308.7
Malaysia	8.4	8.3	9.5	26.2	16.5	3.2	12.8	728.8
Philippines	5.6	5.0	4.0	14.7	-2.1	1.8	21.6	595.5
Singapore	9.9	9.7	10.0	29.5	21.6	3.6	8.6	728.3
Thailand	11.1	9.6	11.8	32.5	73.1	4.0	13.9	672.9
Viet Nam	3.9	2.7	3.9	10.5	43.2	1.3	30.0	403.2
Other	0.8	0.9	0.7	2.4	7.8	0.3	30.5	150.4
<i>Total</i>	64.2	59.9	65.8	190.0	18.8	23.2	12.1	4 587.8
<b>Northeast Asia</b>								
China	7.1	6.3	7.4	20.8	29.3	2.5	15.3	631.3
Hong Kong (SAR of China)	12.6	9.9	11.3	33.8	-16.9	4.1	14.5	1 374.5
Japan	4.9	3.4	4.6	12.9	5.3	1.6	11.5	436.5
Other	3.4	3.9	5.5	12.7	4.4	1.6	15.1	431.7
<i>Total</i>	28.1	23.4	28.8	80.2	-1.2	9.8	14.6	2 874.0
<b>Southern Asia</b>								
India	2.9	1.5	1.9	6.3	37.0	0.8	24.1	283.6
Other	2.4	1.5	1.6	5.6	2.8	0.7	25.4	220.5
<i>Total</i>	5.3	3.0	3.6	11.9	18.6	1.5	24.5	504.2
<b>The Americas</b>								
Canada	3.4	4.9	4.9	13.3	-11.0	1.6	28.6	663.4
United States of America	24.3	31.2	29.4	84.9	-6.5	10.4	20.0	3 033.6
Other	1.2	1.8	2.1	5.1	7.1	0.6	30.7	259.7
<i>Total</i>	28.9	37.9	36.4	103.2	-6.6	12.6	21.4	3 956.7
<b>Africa (excluding North Africa)</b>								
<i>Total</i>	5.0	3.4	3.9	12.2	-4.4	1.5	22.4	468.7
<b>Other and not stated</b>								
	0.4	0.4	1.5	2.3	137.8	0.3	14.0	59.5
<b>Total</b>	<b>262.5</b>	<b>272.8</b>	<b>282.3</b>	<b>817.6</b>	<b>9.9</b>	<b>100.0</b>	<b>18.3</b>	<b>31 688.6</b>

<i>Country of intended stay</i>	<i>Main purpose of journey</i>							<i>Total</i>
	<i>Convention/ conference</i>	<i>Business</i>	<i>Visiting friends/ relatives</i>	<i>Holiday</i>	<i>Employment</i>	<i>Education</i>	<i>Other and not stated</i>	
	'000	'000	'000	'000	'000	'000	'000	'000
<i>Oceania and Antarctica</i>								
Fiji	0.8	2.6	2.3	21.3	0.2	0.1	1.0	28.3
New Zealand	4.3	24.5	36.3	30.8	1.2	0.9	4.5	102.5
Other	0.5	6.4	3.1	17.8	3.2	0.7	1.3	33.0
<i>Total</i>	5.5	33.5	41.6	69.9	4.6	1.6	6.8	163.7
<i>Europe and the former USSR</i>								
France	0.7	1.8	1.8	7.1	0.2	0.1	0.5	12.3
Germany	0.7	2.1	4.4	3.6	0.1	0.3	0.6	11.8
Greece	0.0	0.5	5.2	11.1	0.1	0.0	0.9	17.8
Italy	0.7	2.2	6.4	11.2	0.0	0.5	0.8	21.9
United Kingdom	2.8	9.8	35.3	54.8	1.9	1.3	2.9	109.0
Other	2.7	4.8	25.5	24.2	0.4	0.3	2.0	59.9
<i>Total</i>	7.6	21.2	78.6	112.0	2.8	2.6	7.8	232.7
<i>Middle East and North Africa</i>								
<i>Total</i>	0.7	1.7	7.3	9.7	0.8	0.3	0.9	21.4
<i>Southeast Asia</i>								
Indonesia	1.5	6.4	2.9	59.2	1.6	0.6	2.0	74.2
Malaysia	1.6	5.8	5.0	11.6	0.7	0.3	1.1	26.2
Phillipines	0.3	2.5	7.0	3.8	0.2	0.1	0.9	14.7
Singapore	1.8	9.1	4.0	12.2	1.2	0.2	1.1	29.5
Thailand	0.8	3.5	1.8	24.8	0.4	0.3	0.9	32.5
Viet Nam	0.0	0.9	6.1	2.9	0.3	0.1	0.3	10.5
Other	0.1	0.4	0.8	0.5	0.2	0.1	0.2	2.4
<i>Total</i>	6.0	28.7	27.5	115.1	4.5	1.8	6.4	190.0
<i>Northeast Asia</i>								
China	0.2	6.1	4.7	8.1	0.3	0.4	0.9	20.8
Hong Kong (SAR of China)	0.8	9.8	8.7	10.6	2.0	0.4	1.5	33.8
Japan	0.6	4.9	2.4	3.6	0.4	0.6	0.4	12.9
Other	0.9	4.5	4.4	2.3	0.2	0.0	0.4	12.7
<i>Total</i>	2.4	25.3	20.2	24.6	2.9	1.5	3.2	80.2
<i>Southern Asia</i>								
India	0.1	1.4	2.5	1.9	0.0	0.1	0.2	6.3
Other	0.1	0.5	2.2	2.6	0.1	0.0	0.1	5.6
<i>Total</i>	0.2	1.9	4.8	4.5	0.1	0.1	0.4	11.9
<i>The Americas</i>								
Canada	1.7	1.4	3.7	5.6	0.2	0.2	0.5	13.3
United States of America	7.9	19.0	14.4	38.8	1.5	1.1	2.2	84.9
Other	0.3	0.9	1.0	2.3	0.1	0.1	0.3	5.1
<i>Total</i>	9.9	21.3	19.1	46.7	1.8	1.4	2.9	103.2
<i>Africa (excluding North Africa)</i>								
<i>Total</i>	0.5	2.1	2.3	6.4	0.5	0.2	0.3	12.2
<i>Other and not stated</i>								
	0.0	0.2	0.0	1.1	0.2	0.1	0.8	2.3
<b>Total</b>	<b>32.9</b>	<b>135.9</b>	<b>201.4</b>	<b>390.1</b>	<b>18.2</b>	<b>9.6</b>	<b>29.4</b>	<b>817.6</b>

Country of intended stay	Main purpose of journey in person days							Total
	Convention/ conference	Business	Visiting friends/ relatives	Holiday	Employment	Education	Other and not stated	
	'000	'000	'000	'000	'000	'000	'000	'000
<b>Oceania and Antarctica</b>								
Fiji	5.7	43.1	79.5	263.2	21.4	1.7	45.4	460.0
New Zealand	29.9	238.9	599.6	433.5	120.4	24.2	85.6	1 532.0
Other	7.0	161.9	93.1	208.2	196.1	13.1	84.7	764.1
<i>Total</i>	42.5	444.0	772.2	904.9	337.9	39.0	215.7	2 756.1
<b>Europe and the former USSR</b>								
France	16.9	34.9	103.7	325.0	20.4	21.6	18.2	540.6
Germany	13.4	66.7	258.0	184.8	17.8	19.6	33.7	593.9
Greece	0.1	15.7	562.6	912.6	27.5	0.7	91.7	1 610.9
Italy	18.0	65.8	470.9	559.8	5.1	19.7	46.1	1 185.5
United Kingdom	70.4	336.3	2 038.6	3 669.4	425.1	111.9	247.8	6 899.4
Other	57.8	171.9	1 906.5	1 509.5	100.4	30.5	117.5	3 894.2
<i>Total</i>	176.6	691.4	5 340.1	7 161.0	596.3	204.1	555.0	14 724.5
<b>Middle East and North Africa</b>								
<i>Total</i>	12.9	77.8	693.5	711.6	139.0	35.1	87.2	1 757.0
<b>Southeast Asia</b>								
Indonesia	11.6	221.3	109.2	710.3	126.5	20.9	109.0	1 308.7
Malaysia	12.1	163.9	172.5	210.7	98.2	18.1	53.1	728.8
Philippines	2.6	48.5	296.6	148.5	25.5	22.5	51.3	595.5
Singapore	17.4	129.5	126.2	204.9	159.4	30.8	60.1	728.3
Thailand	7.9	97.1	72.8	397.4	52.1	13.7	31.8	672.9
Viet Nam	0.4	15.5	267.0	84.9	25.0	1.9	8.6	403.2
Other	0.9	12.8	49.0	27.4	30.6	3.6	26.1	150.4
<i>Total</i>	53.0	688.5	1 093.3	1 784.0	517.4	111.6	340.0	4 587.8
<b>Northeast Asia</b>								
China	2.4	142.2	224.4	180.3	32.0	11.0	39.1	631.3
Hong Kong (SAR of China)	9.5	301.1	342.3	252.9	315.1	28.2	125.5	1 374.5
Japan	6.0	74.4	78.7	110.8	105.9	42.5	18.2	436.5
Other	8.0	101.4	185.1	83.5	25.4	5.6	22.6	431.7
<i>Total</i>	26.0	619.1	830.5	627.5	478.3	87.2	205.3	2 874.0
<b>Southern Asia</b>								
India	1.2	37.7	112.4	85.2	6.0	23.6	17.6	283.6
Other	0.8	24.1	96.0	80.2	8.7	2.2	8.6	220.5
<i>Total</i>	1.9	61.8	208.4	165.4	14.7	25.8	26.2	504.2
<b>The Americas</b>								
Canada	34.3	26.5	205.6	304.7	43.3	9.1	39.9	663.4
United States of America	127.7	417.9	697.9	1 226.6	272.9	118.1	172.4	3 033.6
Other	3.8	34.1	81.7	101.8	22.9	2.9	12.5	259.7
<i>Total</i>	165.9	478.4	985.2	1 633.0	339.1	130.2	224.9	3 956.7
<b>Africa (excluding North Africa)</b>								
<i>Total</i>	8.7	65.7	115.7	190.8	57.9	7.9	22.0	468.7
<b>Other and not stated</b>								
	0.0	2.1	0.0	17.4	5.8	3.9	30.3	59.5
<b>Total</b>	<b>487.5</b>	<b>3 128.7</b>	<b>10 039.0</b>	<b>13 195.6</b>	<b>2 486.4</b>	<b>644.8</b>	<b>1 706.6</b>	<b>31 688.6</b>

Country of intended stay	1997						1998					
	Jul	Aug	Sep	Oct	Nov	Dec	Jan	Feb	Mar	Apr	May	Jun
	'000	'000	'000	'000	'000	'000	'000	'000	'000	'000	'000	'000
ORIGINAL												
Fiji	6.5	5.8	7.5	6.4	6.5	8.9	6.8	4.6	7.2	9.7	7.8	10.7
Hong Kong (SAR of China)	9.4	10.2	8.7	10.6	11.9	18.2	12.2	14.2	12.9	12.6	9.9	11.3
Indonesia	31.0	28.9	38.7	31.8	25.8	23.6	20.7	21.7	27.6	24.5	23.8	25.9
Italy	6.7	5.7	9.0	4.4	2.6	2.8	1.6	1.7	4.6	6.3	8.5	7.2
Malaysia	9.5	8.0	9.8	5.9	7.9	10.5	9.7	8.6	8.1	8.4	8.3	9.5
New Zealand	27.9	31.5	39.0	33.1	31.8	51.3	36.3	39.6	36.1	44.4	30.1	28.0
Singapore	9.6	10.3	11.2	8.0	9.9	8.4	8.5	9.3	11.1	9.9	9.7	10.0
Thailand	6.3	5.7	7.9	7.5	9.0	9.8	6.9	8.5	9.8	11.1	9.6	11.8
United Kingdom	35.9	27.1	37.4	24.2	18.8	24.1	13.0	13.1	24.9	29.9	40.6	38.5
United States of America	25.6	30.3	41.2	29.6	25.7	35.9	26.5	19.3	27.2	24.3	31.2	29.4
Other and not stated	80.6	76.4	93.9	75.1	82.4	107.1	64.6	55.8	77.0	81.3	93.4	100.1
<b>Total</b>	<b>249.0</b>	<b>239.8</b>	<b>304.2</b>	<b>236.6</b>	<b>232.3</b>	<b>300.7</b>	<b>206.8</b>	<b>196.6</b>	<b>246.4</b>	<b>262.3</b>	<b>272.8</b>	<b>282.3</b>
SEASONALLY ADJUSTED												
Fiji	5.9	5.2	6.2	6.2	7.2	6.7	7.5	7.9	7.8	10.8	9.2	9.3
Hong Kong (SAR of China)	12.1	12.0	7.6	12.4	10.8	12.2	13.7	13.9	12.7	13.7	12.6	10.3
Indonesia	25.6	27.7	28.6	28.0	27.4	24.2	23.7	29.3	29.0	28.1	31.7	22.8
Italy	4.9	5.5	5.6	5.6	5.0	3.3	4.0	4.1	4.8	6.0	5.7	4.7
Malaysia	7.9	9.4	7.9	6.2	8.2	7.3	9.8	10.8	9.0	9.8	10.3	8.6
New Zealand	33.0	35.3	33.4	35.6	34.8	34.9	35.4	38.7	31.9	44.4	39.0	35.3
Singapore	8.7	11.1	10.2	8.0	9.1	7.6	9.5	11.1	9.9	10.4	11.0	10.5
Thailand	5.9	7.1	7.4	6.9	8.2	8.4	7.6	9.5	10.1	9.7	11.3	13.0
United Kingdom	27.2	26.6	28.2	27.8	28.4	25.5	26.5	25.7	27.5	26.5	29.6	27.0
United States of America	25.6	31.5	31.3	30.2	30.1	30.8	29.7	27.5	28.5	26.7	28.6	25.5
Other and not stated	75.4	80.7	83.4	92.1	80.7	79.6	83.2	80.0	81.3	85.5	86.4	85.3
<b>Total</b>	<b>232.1</b>	<b>251.8</b>	<b>249.7</b>	<b>259.0</b>	<b>249.8</b>	<b>240.4</b>	<b>250.5</b>	<b>258.5</b>	<b>252.5</b>	<b>271.6</b>	<b>275.5</b>	<b>252.2</b>
TREND												
Fiji	5.9	6.0	6.1	6.3	6.6	7.0	7.5	8.1	8.6	9.1	9.1	9.0
Hong Kong (SAR of China)	12.9	12.3	11.9	11.8	12.0	12.5	12.9	13.2	13.1	12.8	12.3	11.8
Indonesia	26.9	27.4	27.4	27.1	26.6	26.4	26.7	27.3	27.9	28.1	28.3	28.3
Italy	5.3	5.3	5.2	5.0	4.6	4.3	4.3	4.5	4.8	5.1	5.3	5.4
Malaysia	8.3	8.0	7.8	7.7	7.9	8.4	9.0	9.5	9.7	9.7	9.6	9.5
New Zealand	34.0	34.1	34.4	34.6	34.8	35.3	36.0	36.8	37.5	38.4	39.4	40.4
Singapore	9.6	9.6	9.4	9.1	8.9	9.0	9.3	9.8	10.2	10.4	10.5	10.5
Thailand	6.6	6.8	7.1	7.4	7.7	8.1	8.5	9.1	9.8	10.4	11.2	12.0
United Kingdom	27.6	27.8	27.7	27.4	27.0	26.8	26.6	26.6	26.9	27.0	27.1	27.3
United States of America	29.0	29.7	30.3	30.6	30.5	30.1	29.4	28.7	28.1	27.4	26.5	25.6
Other and not stated	79.3	81.3	83.0	83.8	83.5	82.7	81.9	81.9	82.6	83.6	84.3	84.7
<b>Total</b>	<b>245.5</b>	<b>248.3</b>	<b>250.2</b>	<b>250.7</b>	<b>250.2</b>	<b>250.6</b>	<b>252.2</b>	<b>255.3</b>	<b>259.3</b>	<b>262.0</b>	<b>263.7</b>	<b>264.5</b>

## EXPLANATORY NOTES

### INTRODUCTION

**1** This publication brings together domestic tourism data from a number of sources, including previously unpublished data from the quarterly Survey of Tourist Accommodation (STA) and the Overseas Arrivals and Departures Collection (OAD).

### TOURIST ACCOMMODATION

**2** The series of tables and graphs in the tourist accommodation section of this publication contain statistics for Australia and each State and Territory. Statistics in this publication are the latest available for the June quarter 1998.

### SCOPE AND COVERAGE

**3** Tourist accommodation establishments included in the STA, and for which data appear in this publication, are hotels, motels and guest houses with facilities; and serviced apartments which are available to the general public for a minimum of one night.

**4** Data collected and published relate to both long-term and short-term guests at hotels, motels and guest houses, but only short-term guests at serviced apartments. For hotels, motels and guest houses the amount of long-term residential activity is considered insignificant. This activity is included in the data presented.

**5** As a result of the separate classification of serviced apartments from the March quarter 1998, there have been several changes to definitions of accommodation units. Some units which were previously classified as hotels, motels or holiday flats have been reclassified to serviced apartments. A small number of establishments previously classified as motels, have been reclassified as holiday flats, units or houses, and are no longer in scope of the quarterly STA.

**6** From the March quarter 1998, only those in-scope establishments with 15 or more rooms or units are covered by the survey. Data for the 1997 calendar year have been recompiled on the new basis. Data for time periods prior to 1997 have been recompiled to only include accommodation establishments with 15 or more rooms, but have not been recompiled to reflect the inclusion of serviced apartments as a separate classification. This means that data for periods prior to the March quarter 1997 reflect the old classification and only include hotels, motels and guest houses. It should be noted that some serviced apartments may have been included in STA estimates prior to the March quarter 1997, as they may previously have been classified as hotels or motels, as outlined in paragraph 5 above.

**7** As a result of the changes to the scope and classification of accommodation establishments there is a break in all time series between the December quarter 1996 and the March quarter 1997.

ESTIMATES AT CONSTANT  
PRICES

**8** Estimates of quarterly takings from accommodation contained in this publication are also expressed in terms of average 1989–90 prices (constant prices). These estimates are presented in original, seasonally adjusted and trend terms, for Australia and each State and Territory. (Note: monthly data at constant prices are not available.)

**9** Takings from accommodation for each State and Territory have been deflated using the All Groups Consumer Price Index (CPI) for the relevant capital city. The CPI has been used as it is a measure of the general extent of price change (inflation) in the economy. (Note: the CPI is only produced for capital cities.) As an example, an increase of 10% in the New South Wales takings from accommodation at 1989–90 prices over a period would mean that New South Wales takings from accommodation increased 10% more than the Sydney CPI over that period, implying that takings from accommodation in New South Wales increased 10% more than inflation.

**10** General information on price deflators and constant price estimates is contained in section 4 of *Australian National Accounts: Concepts, Sources and Methods, 1989* (ABS Cat. no. 5216.0).

INTERNATIONAL TOURISM

**11** The series of tables and graphs contained in the international tourism section of this publication contains statistics on short-term visitors arriving in or departing from Australia, and departures of Australian residents for short-term trips abroad. Short-term movement relates to an intended length of stay of less than 12 months.

SOURCE OF THE STATISTICS

**12** Persons arriving in, or departing from, Australia are required to complete prescribed questionnaires in the form of Incoming and Outgoing Passenger Cards. These cards provide information to the Department of Immigration and Multicultural Affairs (DIMA) for administrative purposes and serve as the source of statistics of overseas arrivals and departures. In accordance with the *Census and Statistics Act 1905*, information relating to individuals, individual flights or ships and individual carriers, which is contained in these cards or other documents, is treated as confidential by the Australian Bureau of Statistics.

**13** Implementation of the *Migration Reform Act 1992* by DIMA required that a health and character check be incorporated with the Incoming Passenger Card. The redesign of both passenger cards followed and new passenger cards were officially introduced on 1 September 1994. The main statistical change relating to data in this publication affects the purpose of journey classification and constitutes a break in time series for this data item.

## SCOPE

**14** The statistics in this publication relate to the number of movements of travellers rather than the number of travellers (i.e. the multiple movements of individual persons during a given reference period are each counted separately). The statistics exclude the movements of operational air and ships' crew, of transit passengers who pass through Australia but are not cleared for entry, and of passengers on pleasure cruises commencing and finishing in Australia aboard ships not then engaged on regular voyages.

## ESTIMATION METHOD

**15** Overseas arrival and departure statistics are derived from a combination of full enumeration and sampling. All movements with a duration of stay of less than one year are sampled. Statistics relating to these movements are therefore estimates, which may differ from statistics which would have been obtained if details of all these movements had been processed.

## CORRECTIONS AND IMPUTATIONS

**16** Imprecision due to sampling errors should not be confused with errors arising from imperfections in reporting, which may occur in any data collection, whether sampled or not. Every effort is made to minimise such errors, by careful design of the passenger cards and through checks on the information once it is received. During the edit process some items are corrected where they conflict with other known information. Missing replies to certain items such as age are also imputed by reference to other related items.

**17** Errors of this kind differ from discrepancies arising from the fact that certain information reflects the travellers' intentions, at the time the passenger cards were completed. These intentions are, of course, subject to change. Particularly affected is the distinction between permanent and temporary movement and in the latter case, length of intended stay, country in which most time will be spent, and purpose of journey.

## SEASONAL ADJUSTMENT

**18** Seasonally adjusted and trend estimates are shown in various graphs and tables throughout this publication. In these series, account has been taken of normal seasonal factors, 'trading day' effects (arising from the varying number of Sundays, Mondays, Tuesdays etc. in the month) and the effect of movement in the date of Easter which may, in successive years, affect figures for different months. Details of the methods used in seasonally adjusting the series from the STA and OAD collections are available on request.

**19** Seasonal adjustment is a means of removing the estimated effects of normal seasonal variation from the series so that the effect of other influences on the series may be more clearly recognised. Seasonal adjustment procedures do not aim to remove the irregular or non-seasonal influences which may be present in any particular month. Irregular influences that are highly volatile can make it difficult to interpret the movement of the series even after adjustment for seasonal variation, and cannot be assumed to indicate changes in the trend.

## TREND ESTIMATES

**20** Smoothing seasonally adjusted series reduces the impact of the irregular component of the seasonally adjusted series and creates the trend estimates. The trend estimates are derived by applying a 13-term weighted moving average to the monthly and a 7-term Henderson moving average to the quarterly seasonally adjusted series. The 7- and 13-term Henderson averages (like all Henderson averages) are symmetric but, as the end of a time series is approached, asymmetric forms of the average are applied. Unlike the weights of the standard 7-term Henderson moving average, the weights employed with the quarterly data have been tailored to suit the particular characteristics of individual series.

**21** While these techniques enable smoothed data for the latest period to be produced, it does result in revisions to the smoothed series, principally of recent months, as additional observations become available. There may also be revisions as a result of the re-estimation of the seasonal factors. For further information refer to, *A Guide to Interpreting Time Series—Monitoring 'Trends', an Overview, 1993* (ABS Cat. no. 1348.0), or contact the Assistant Director, Time Series Analysis on 02 6252 6345.

## RELATED PUBLICATIONS

**22** Comprehensive definitions and explanations, and detailed data are contained in the publications below, which can be obtained from ABS Bookshops or by mail order:

*Directory of Tourism Statistics, 1997* (ABS Cat. no. 1130.0)—irregular

*Overseas Arrivals and Departures, Australia* (ABS Cat. no. 3401.0)—issued monthly

*Migration, Australia* (ABS Cat. no. 3412.0)—issued annually

*Consumer Price Index* (ABS Cat. no. 6401.0)—issued quarterly

*Tourist Accommodation, Australia* (ABS Cat. no. 8635.0)—issued quarterly

Tourist accommodation small area data for each State and the Northern Territory—issued quarterly

**23** Current publications produced by the ABS are listed in the *Catalogue of Publications and Products* (ABS Cat. no. 1101.0). The ABS also issues on Tuesdays and Fridays, a *Release Advice* (ABS Cat. no. 1105.0) which lists publications to be released in the next few days. Both are available from any ABS office or the ABS website.

**24** Related statistics are also published by the Bureau of Tourism Research, The Department of Immigration and Multicultural Affairs and the Department of Transport and Regional Services.



ADDITIONAL STATISTICS  
AVAILABLE

**25** As well as the statistics included in this and related publications, the ABS can make available information which is not published. Generally a charge is made for providing unpublished information.

ROUNDING

**26** Where figures have been rounded, discrepancies may occur between sums of the component items and totals.

SYMBOLS AND OTHER  
USAGES

ABS	Australian Bureau of Statistics
CPI	Consumer Price Index
DIMA	Department of Immigration and Multicultural Affairs
n.a.	not available
n.p.	not published
NZ	New Zealand
OAD	Overseas Arrivals and Departures Collection
STA	Survey of Tourist Accommodation
UK	United Kingdom
USA	United States of America
—	nil or rounded to zero
. .	not applicable

## GLOSSARY

<b>Average length of stay</b>	Average length of stay is expressed in numbers of days and calculated: <ul style="list-style-type: none"><li>■ for hotels, motels and guest houses, by dividing guest nights by guest arrivals; and</li><li>■ for serviced apartments, by dividing units nights occupied by unit lettings.</li></ul>
<b>Average nightly guests per occupied room</b>	Guest nights divided by room nights occupied.
<b>Average nightly rooms occupied per establishment</b>	The average number of rooms per establishment multiplied by the occupancy rate for the survey period.
<b>Average takings per establishment</b>	The takings from accommodation for the survey period divided by the number of establishments at the end of the survey period.
<b>Average takings per guest night</b>	The takings from accommodation divided by the total number of guest nights for the survey period.
<b>Average takings per room night available</b>	The takings from accommodation divided by the total room nights available for the survey period.
<b>Average takings per room night occupied</b>	The takings from accommodation divided by the total number of room nights occupied for the survey period.
<b>Capacity</b>	Capacity in terms of Guest rooms/units or bed spaces is the maximum number available to accommodate paying guests during the survey period. Capacity closed temporarily for seasonal reasons is included.
<b>Country of intended stay</b>	For Australian residents travelling abroad for short-term trips, this relates to the country in which they intend to spend the most time.
<b>Country of residence</b>	Country of residence refers to the country in which short-term visitors regard themselves as living or as last having lived.  The classification of countries in this publication is based on the Standard Australian Classification of Countries. For more detailed information, refer to the Australian Bureau of Statistics publication <i>Standard Australian Classification of Countries (SACC), 1998</i> (ABS Cat. no. 1269.0).
<b>Establishments</b>	All hotels, motels, guest houses and serviced apartments within the scope of the survey which operated for any part of the survey period, or which closed temporarily for the quarter for seasonal reasons.
<b>Guest nights</b>	The total number of paying guests counted on each night they stayed at the accommodation establishment.

<b>Guest rooms</b>	The maximum number of rooms available at each establishment during the survey period for accommodating short-term paying guests. Units and apartments within serviced apartments are treated as rooms in these survey results.
<b>Median length of stay</b>	Defined as the length of stay which divides the relevant population into two equal parts, one half of the cases falling below the median and the other half exceeding it.
<b>Occupancy rate</b>	Occupancy expressed as a percentage of total capacity available during the survey period, e.g. for the period.  $\text{Room occupancy rate (\%)} = \frac{\text{Room nights occupied} \times 100}{(\text{Guest rooms}) \times (\text{no. of days in the period})}$
<b>Person days</b>	Defined as the number of short-term visitor arrivals or short-term resident departures multiplied by the intended length of stay for each visitor or resident.
<b>Purpose of journey</b>	From September quarter 1994, all statistics relating to purpose of journey are published using the following categories: Convention/conference, Business, Visiting friends/relatives, Holiday, Employment, Education and Other. In tabulations of data collected before September 1994, the 'Other' category includes 'In transit', and the 'Holiday' category includes 'Student vacation' and 'Accompanying business visitor'.
<b>Room nights available</b>	The total of guest rooms/units available multiplied by the number of days for which each was available during the survey period.
<b>Room nights occupied</b>	The total number of nights each guest room/unit was occupied by a paying guest during the survey period.
<b>Rooms per establishment</b>	The average number of rooms/units per establishment.
<b>Short-term movement</b>	Movements of travellers whose intended or actual length of stay is less than 12 months are classified as short-term. The tables for visitor arrivals and resident departures in this publication relate to short-term movements only.
<b>Star grading</b>	The grading of hotels and motels with facilities and serviced apartments is based on the classification system used by members of the Australian Automobile Association (AAA). The gradings are allocated according to a points system based on the amenities and facilities available to guests. Details of the grading scheme are contained in the RACV-RAASA members' publication <i>Accommodation Australia</i> , or the individual tour guides produced by members of the AAA. For the purpose of classifying establishments to a star grading in this publication, 'half' star gradings are ignored (e.g. a two and a half star grading has been shown as a two star).

**Takings from  
accommodation**

Gross revenue from the provision of accommodation, including bed taxes. Takings from meals are excluded. Takings from accommodation for each month generally represent the takings received during that month. Where payments are received in advance of, or after, the provision of accommodation to guests, the monthly figure for takings from accommodation may not necessarily bear a direct relationship to the number of guests accommodated during the month.







## SELF-HELP ACCESS TO STATISTICS

*PHONE* Call 1900 986 400 for the latest statistics on CPI, Labour Force, Earnings, National Accounts, Balance of Payments and other topics. (Call cost is 75c per minute)

*INTERNET* <http://www.abs.gov.au>

*LIBRARY* A range of ABS publications is available from public and tertiary libraries Australia wide. Contact your nearest library to determine whether it has the ABS statistics you require.

## WHY NOT SUBSCRIBE?

*PHONE* +61 1300 366 323

*FAX* +61 3 9615 7848

## CONTACTING THE ABS

ABS provides a range of services, including: a telephone inquiry service; information consultancy tailored to your needs; survey, sample and questionnaire design; survey evaluation and methodological reviews; and statistical training.

<i>INQUIRIES</i>	<i>By phone</i>	<i>By fax</i>
Canberra	02 6252 6627	02 6253 1404
Sydney	02 9268 4611	02 9268 4668
Melbourne	03 9615 7755	03 9615 7798
Brisbane	07 3222 6351	07 3222 6283
Perth	08 9360 5140	08 9360 5955
Adelaide	08 8237 7400	08 8237 7566
Hobart	03 6222 5800	03 6222 5995
Darwin	08 8943 2111	08 8981 1218

*POST* Client Services, ABS, PO Box 10, Belconnen, ACT 2616

*EMAIL* [client.services@abs.gov.au](mailto:client.services@abs.gov.au)



2863400006984

ISSN 1321-4144

RRP \$21.00